

## MID-WIDTH FRONT BUMPER

18+/20+ JL/JT WRANGLER/GLADIATOR

FBJL-06



### TOOLS REQUIRED

- 13mm, 16mm, 18mm, 19mm Socket
- 16mm, 19mm Deep Socket
- 4mm, 8mm Allen Bit
- Trim Clip Tool
- Philips Head Screwdriver

### SKILL LEVEL

- Intermediate
  - 2 persons
- Little skill level required, however assistance is required for installation and removal of bumpers.

### TIME REQUIRED

- 3 Hours
- Time to install this should take about three hours.

## WARNINGS/CAUTIONS BEFORE STARTING INSTALLATION

Before you install this kit – Read and understand all instructions, warnings, cautions, and notes contained in this installation instruction guide. Consult your vehicle owner's manual for proper disconnection of electrical and lifting of vehicle if required for installation of this product.

This install may require some technical skills and knowledge of basic mechanical work. If you do not feel that you are capable of performing this install please take this product to a trained professional.

After reading this guide please contact us with any questions or concerns before installing product.  
Customer Service: 855-680-9595

*DV8 Offroad is not responsible for any bodily injury or harm to you or your vehicle as a result of an improper install.*

Proper installation of this kit required knowledge of the factory recommended procedures for removal and installation of original equipment components. We recommend that the factory shop manual and any special tools needed to service your vehicle be on hand during the installation. Installation of this kit without proper knowledge of the factory recommended procedures may affect the performance of these components and the safety of the vehicle

- Always wear eye protection when operating power tools

*Inspect all contents of this package to make sure product is not damaged and all installation hardware has been included. If parts are missing from kit, please be prepared to provide the following information*

1. Name of purchase location
2. Bar Code on side of box
3. Date above bar code
4. Date inside box cover



# INSTALLATION MANUAL

## STEP 1 | UNINSTALL OF FRONT BUMPER

Using a push pin removal tool, remove the two push pins securing the plastic trim piece under the grille and behind the bumper.



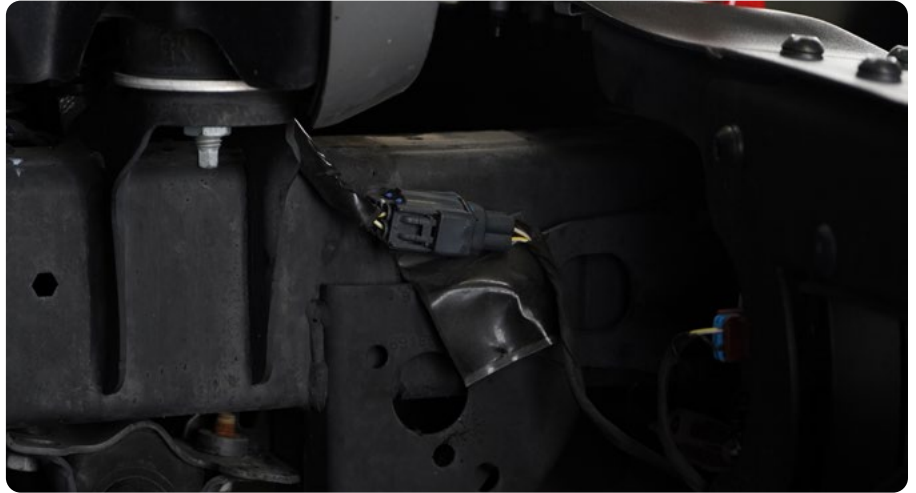
# INSTALLATION MANUAL

**STEP 2** | Using a 13mm socket, remove the seven bolts securing the skid plate to the vehicle, and set off to the side.



# INSTALLATION MANUAL

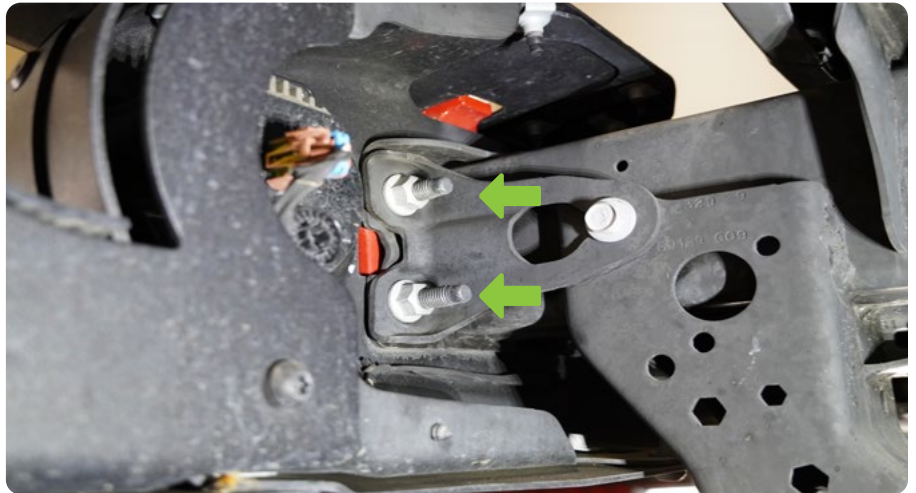
**STEP 3** | Disconnect the fog lights by unplugging the wiring connectors located on passenger frame rail directly behind the bumper.



## INSTALLATION MANUAL

**STEP 4** | Using a 19mm deep socket, remove the eight nuts securing the bumper, located directly behind it. Once all nuts are removed, pull bumper from the vehicle and set off to the side.

*Note: Once nuts are removed, bumper can become loose and fall. Ensure bumper is secure. Assistance is recommended to prevent injury and damage to the vehicle or product.*



**STEP 5** | At this point, frame rails should be visible and the vehicle should be ready for installation of an aftermarket bumper.



# INSTALLATION MANUAL

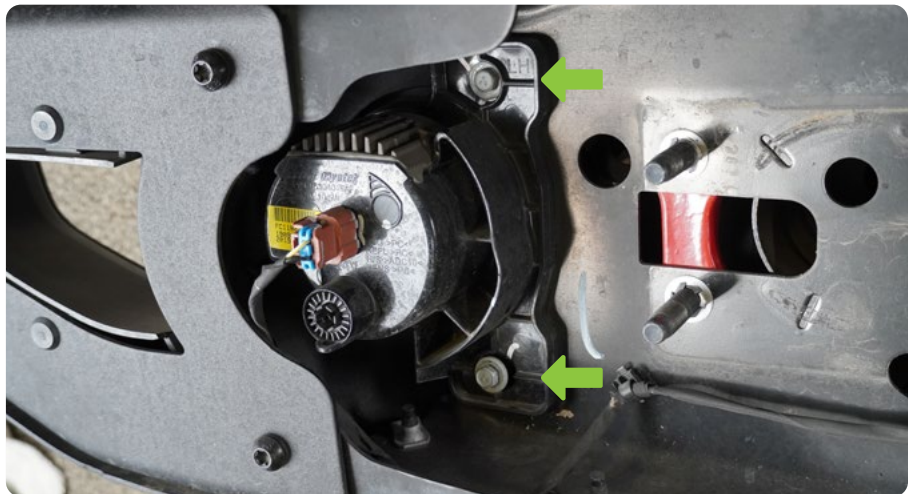
**STEP 6 |** Disconnect the wiring connector from the fog lights by pressing the release tabs and pulling.



**STEP 7 |** Remove the fog lights from the factory bumper and set them to the side for installation on the DV8 bumper.

Due to variations in design of the fog light, the tool required, and the number of fasteners to remove may vary.

Once the fog lights are removed, use a trim clip tool to remove the clips securing the foglight wiring to the vehicle. Remove the wiring and set off to the side for installation on the DV8 bumper.



# INSTALLATION MANUAL

Begin by unpacking all items and inspecting for missing pieces or damage. If you have any concerns, please contact the company the product was purchased from. Extra hardware may be included with the hardware kit.

## HARDWARE INCLUDED

- |                        |                        |
|------------------------|------------------------|
| (2) M10x35 Allen       | (6) M6x16 Hex          |
| (8) M10 Flat Washers   | (4) M6x16 Allen        |
| (8) M10 Spring Washers | (10) M6 Spring Washer  |
| (6) M10 Nuts           | (10) M6 Washer         |
| (2) M12x30 Allen       | (8) M4x20 Philips Head |
| (4) M12 Flat Washers   | (8) M4 Flat Washer     |
| (2) M12 Lock Nuts      | (8) M4 Spring Washer   |
|                        | (8) M4 Nut             |



**STEP 8** | Install and secure the bullbar using the provided M6 hardware with a 10mm wrench.



# INSTALLATION MANUAL

**STEP 9 |** Install the factory fog lights using the provided M4 hardware with a philips head screwdriver.

You may also choose to use zipties for a simpler install. (Zipties not provided.)

Due to the variations in fog light design, the number of mounting points may vary.

Some designs may not have room to accept a washer on both sides of the mounting point.

Intall the factory fog light wiring harness connector to the fog lights by pressing them into place.



**STEP 10 |** Install the fairlead using the provided M12 with a 19mm socket and an 8mm allen bit.





# INSTALLATION MANUAL

**STEP 11** | If you are installing a fairlead, do so at this time using the hardware provided with the fairlead.

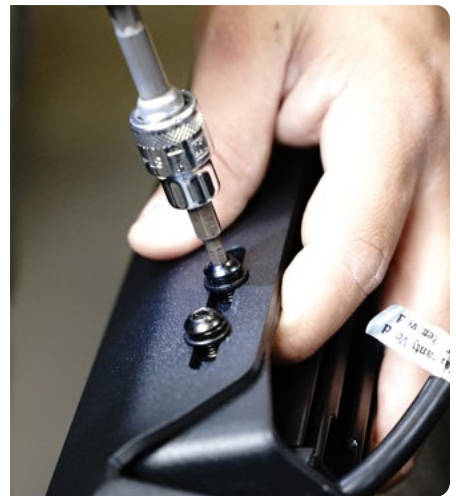
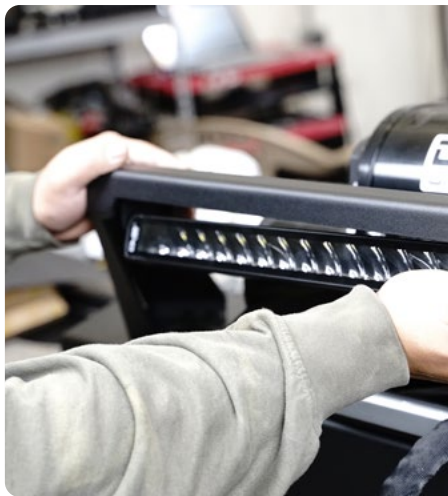


**STEP 12** | If you are running a lightbar, install the mounting tabs onto the lightbar using the hardware provided with the lightbar.

Then, loosely secure the lightbar mounting brackets to the bullbar using the provided M6 hardware.

Center the light in the bullbar and finish securing the hardware using a 4mm allen bit.

There are access holes on the bumper “under” the bullbar and on the mounting plates on the backside of the bumper. Please note that access to these cavities for routing wiring may be restricted after installation.



# INSTALLATION MANUAL

**STEP 13** | If you are installing a winch, do so at this time using the hardware provided with the winch.



**STEP 14** | With the help of a friend, lift the bumper to the vehicle and secure using the provided M10 hardware. Be careful not to allow any wires to become pinched.

Align the bumper so it is level and center, then finish securing the hardware fastening the bumper to the vehicle using a 16mm socket. Torque all mounting hardware to 55 ft-lbs.

*Note: Assistance is recommended to prevent injury and damage to the product or vehicle.*



# INSTALLATION MANUAL

**STEP 15** | Install the connectors for the fog lights and then connect the wiring harness to the connector on the vehicle located behind the bumper on the passenger side frame rail.

Secure any loose or hanging wire with zipties.



**STEP 16** | Double check fitment and all hardware is secure.

Congrats! You are finished with the install of the 18+/20+ JL/JT Wrangler/ Gladiator Mid-Width Front Bumper.

