

## JL FULL WIDTH REAR BUMPER

2018+ JEEP JL WRANGLER

RBJL-13



### TOOLS REQUIRED

- Rubber mallet
- 22g wire (10-14") and connectors (2-6pcs)
- Zip ties
- Electrical tape/wire loom
- 8, 16, 18, 19, 21mm Sockets
- 10mm, 18mm, 21mm Wrench
- #4 Allen Bit
- Wire Cutters
- Phillips Head Screw Driver

### SKILL LEVEL

- Intermediate
  - 2 persons
- Little skill level required, however, additional assistance is required for removal and installation of bumper.

### TIME REQUIRED

- 3 Hours
- Time to install this should only take about three hours.

## WARNINGS/CAUTIONS BEFORE STARTING INSTALLATION

Before you install this kit – Read and understand all instructions, warnings, cautions, and notes contained in this installation instruction guide. Consult your vehicle owner's manual for proper disconnection of electrical and lifting of vehicle if required for installation of this product.

This install may require some technical skills and knowledge of basic mechanical work. If you do not feel that you are capable of performing this install please take this product to a trained professional.

After reading this guide please contact us with any questions or concerns before installing product.  
Customer Service: 855-680-9595

*DV8 Offroad is not responsible for any bodily injury or harm to you or your vehicle as a result of an improper install.*

Proper installation of this kit required knowledge of the factory recommended procedures for removal and installation of original equipment components. We recommend that the factory shop manual and any special tools needed to service your vehicle be on hand during the installation. Installation of this kit without proper knowledge of the factory recommended procedures may affect the performance of these components and the safety of the vehicle

- Always wear eye protection when operating power tools

*Inspect all contents of this package to make sure product is not damaged and all installation hardware has been included. If parts are missing from kit, please be prepared to provide the following information*

1. Name of purchase location
2. Bar Code on side of box
3. Date above bar code
4. Date inside box cover



# INSTALLATION MANUAL

**STEP 1** | Disconnect the wiring harness for the license plate light.

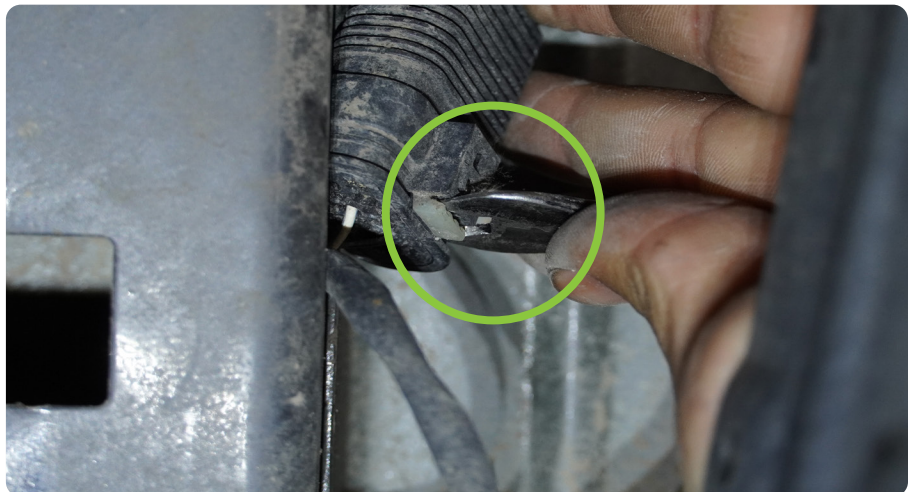
This is located inside the bumper behind the license plate.



**STEP 2** | Disconnect the bumper wiring harness using a panel clip tool or flat screwdriver to pry open the white locking clip and remove.

Use a panel clip removal tool to disconnect the two clips securing the wiring to the vehicle.

This is located behind the bumper on the driver-side of the vehicle.



# INSTALLATION MANUAL

**STEP 3** | Use a 8mm socket to remove the bolts securing the rear inner fender covers.



**STEP 4** | Use a 16mm socket to remove the bolts securing the bumper brackets to the bumper. These are located on the edges of the bumper behind the rear tires.



**STEP 5** | Use a 16mm socket to remove the remaining four bolts securing the bumper to the vehicle located between the bumper and rearmost body mount.

**NOTE:** Bumper may become loose while removing these bolts. Assistance is recommended to prevent injury and damage to the vehicle or product.





# INSTALLATION MANUAL

**STEP 6** | Remove the remaining brackets from the frame rails using either an 18mm or 21mm socket.

*Note: The tool required may vary based on model.*

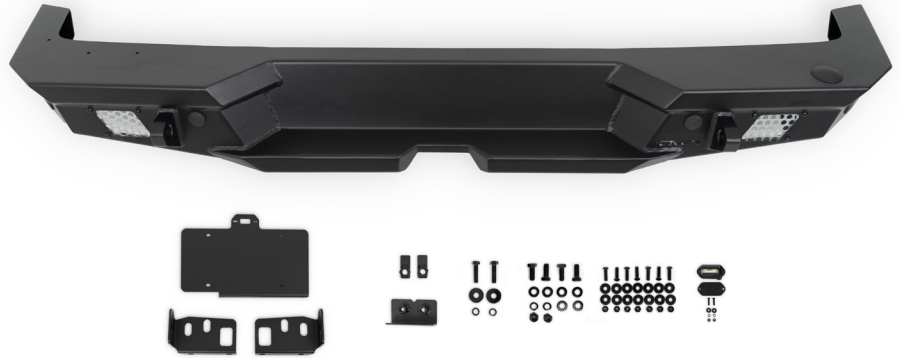


# INSTALLATION MANUAL

Begin by unpacking all items and inspecting for missing pieces or damage. If you have any concerns, please contact the company the product was purchased from.

## HARDWARE INCLUDED

- |                         |                              |
|-------------------------|------------------------------|
| (4) M14x35 Hex Bolts    | (14) M6 Flat Washers         |
| (2) M14 Nylon Lock Nuts | (7) M6 Nylon Lock Nuts       |
| (2) M14 Spring Washers  | (2) M4x15 Philips Head Bolts |
| (6) M14 Flat Washers    | (2) M4 Flat Washers          |
| (2) M14 Nut Plates      | (2) M4 Spring Washers        |
| (2) M12x45 Hex          | (2) M4 Nuts                  |
| (2) M12 Spring Washers  |                              |
| (2) M12 Flat Washers    |                              |
| (7) M6x20 Allen         |                              |



**STEP 7 |** If equipped with factory backup sensors, begin by removing the harness from factory bumper to prepare for install. **Skip to step 13 if not equipped with factory sensors.**

If equipped with factory metal bumper, you will be able to reuse the sensor bezels/mounts. If equipped with factory plastic bumpers, we highly recommend using OE sensor bezels or DV8 part #MPRSNSR-01.

Lay out the harness ensuring the main plug for the harness is on the driver-side of the bumper. Push out the DV8 sensor plugs towards the front of the bumper.





# INSTALLATION MANUAL

**STEP 8 |** Push the sensor bezels into place. The outside bezels should be facing downwards, and the two inside bezels should be facing down and inwards away from the d-ring.

A rubber mallet can be used to lightly tap them into place. The bezels should be flat against the bumper.



**STEP 9 |** With the bezels in place, run the sensor wiring harness through cavity in the bumper aligning the sensors with the bezels. Push Sensors into bezels ensure they have “clicked” into place. Secure sensor harness using provided zip tie tabs.

*Note: If your jeep has factory metal bumpers, one of the wires in the harness will need to be lengthened. If equipped with factory plastic bumpers, Skip to step 13.*

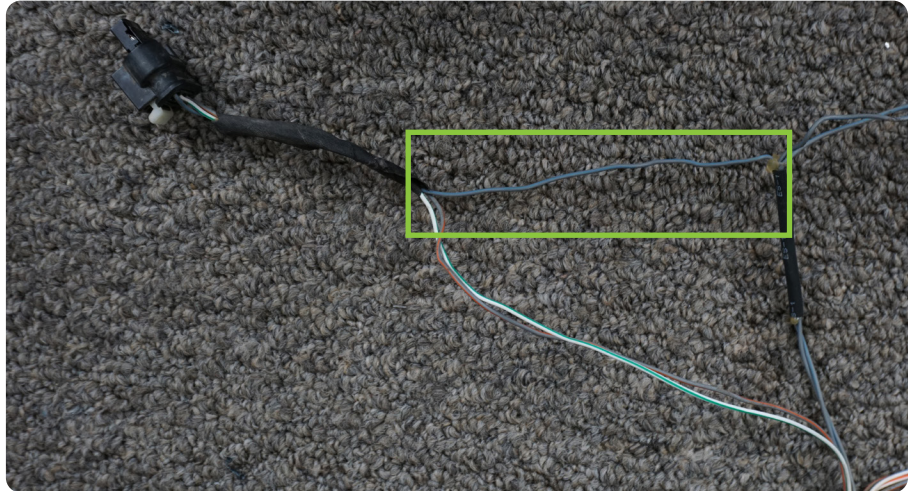




# INSTALLATION MANUAL

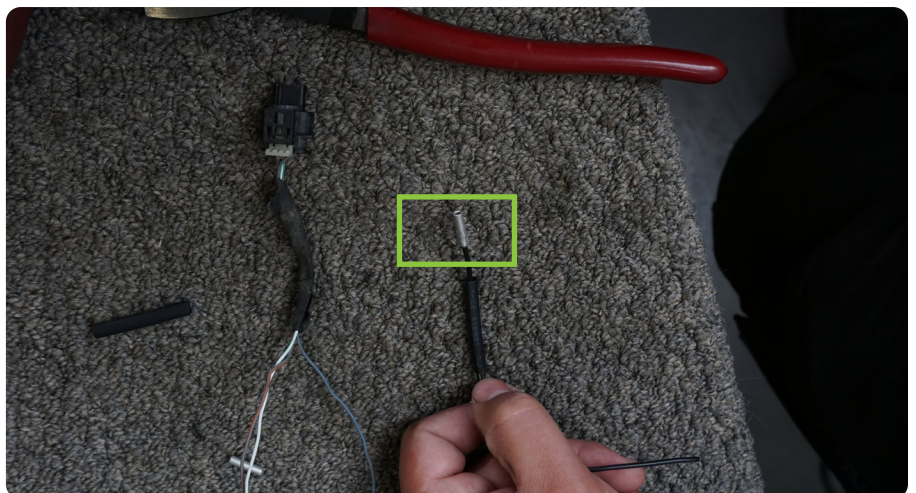
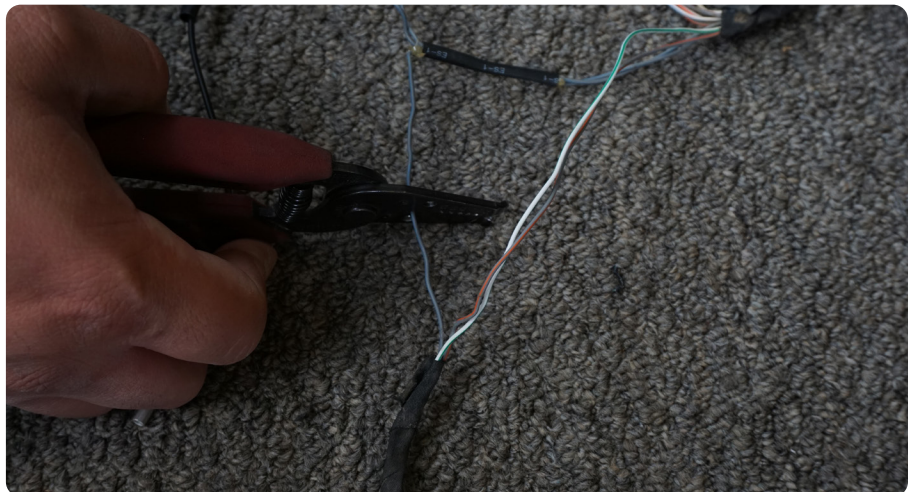
**STEP 10** | If your bumper was equipped with factory metal bumpers, you will need to pull back the wire cover on the **driver-side inside** sensor until all wires are exposed.

This wire will need to be lengthened 5-10”.



**STEP 11** | Using wire cutters, cut the wire and prepare ends for wire connectors.

Using the 22g wire, crimp connectors to your wire extension (we used non-insulated connectors and heat shrink for this install).

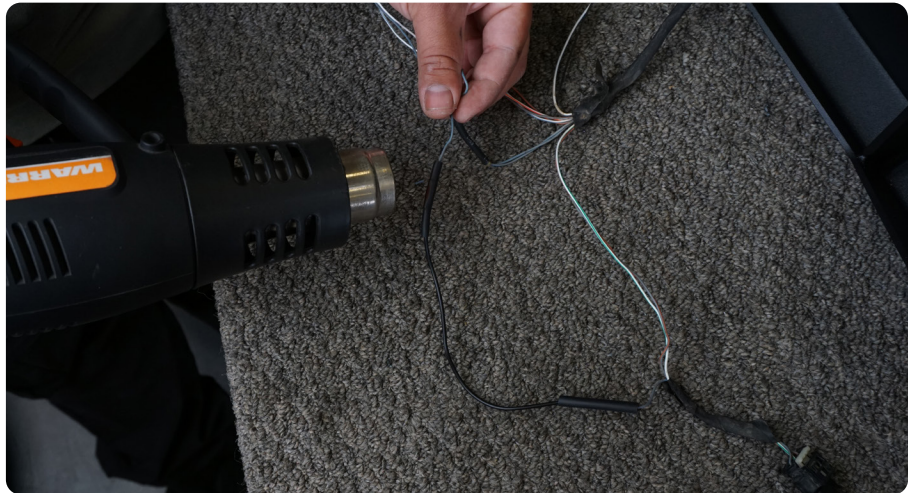




# INSTALLATION MANUAL

**STEP 12** | Insert the extension between the cut wire and secure. Re-wrap harness and continue with the install.

If you have any questions, please reach out to our tech team for assistance.



**STEP 13** | If installing light pods, using the hardware provided with the lights, install them to the mounts at this time.

*For this install, we are using (2) 3" elite pod lights.*





# INSTALLATION MANUAL

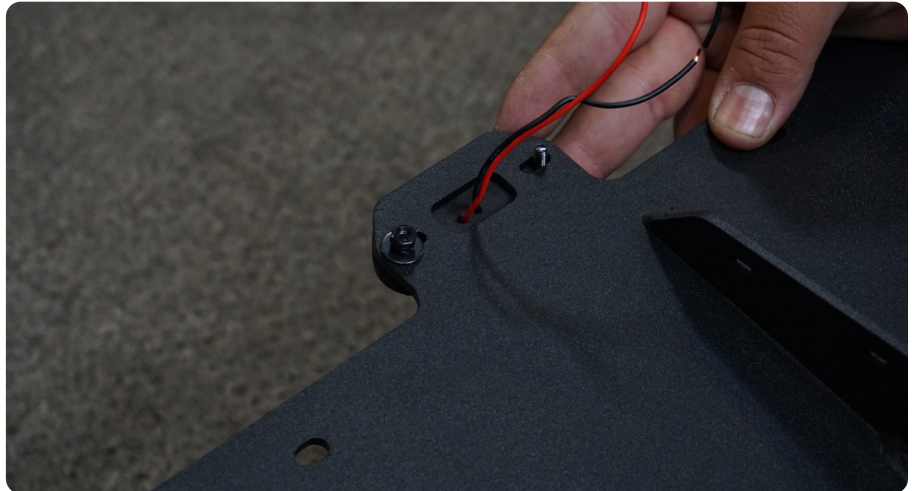
**STEP 14** | Mount the provided license plate mount to the bumper using the M6 hardware include with the kit.

Secure hardware using a #4 allen and 10mm wrench .



**STEP 15** | Install the provided foam onto the license plate light.

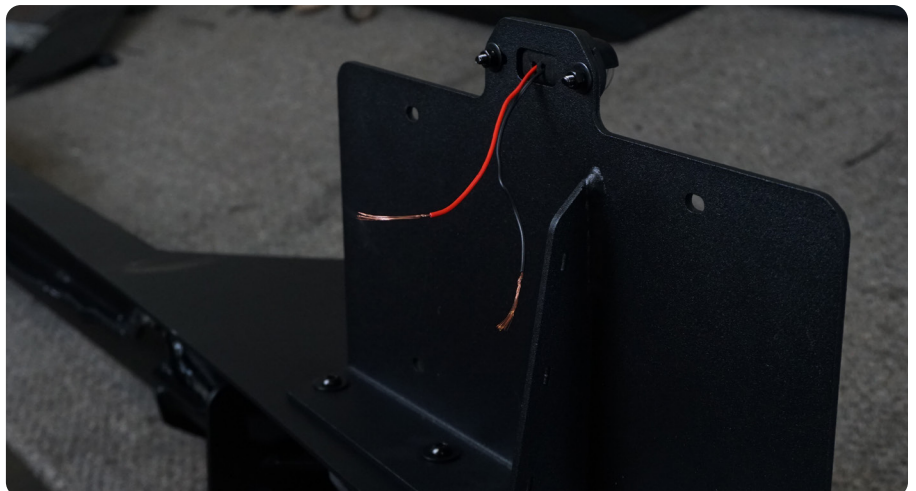
Then, install the provided license plate light on to the license plate mount using the M4 hardware and a Phillips screw driver.



**STEP 16** | To connect the license plate light, cut off the factory license plate light plug and either cut back the factory wire loom to expose more wire length, or use 22g wire to extend the harness.

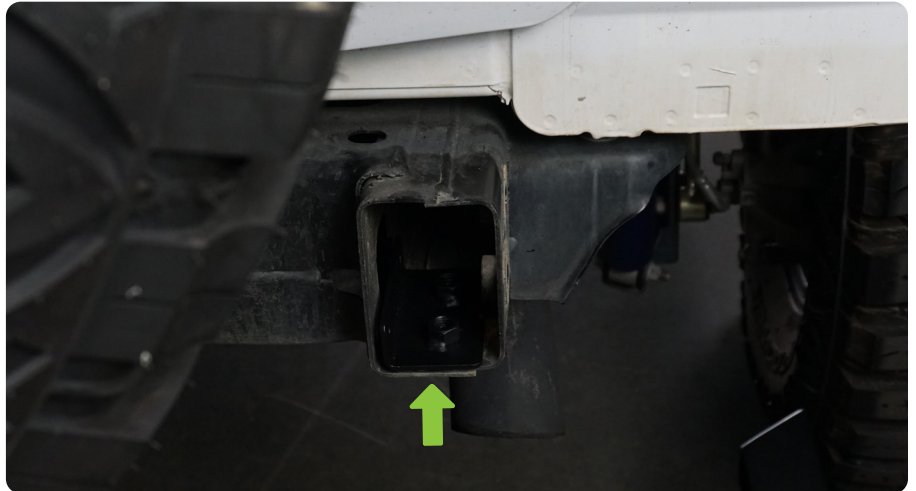
Using connectors, connect the factory harness to your new license plate light.

Cover in wire loom or electrical tape. Zip tire to backside of license plate mount.





**STEP 17** | Place the provided nut plate into the passenger side of the frame with the nuts facing upwards.



**STEP 18** | Install the mounts onto the bumper. Using the provided M12 hardware and nut plate.

The nut plate will be used for the top bolts on both sides.

Leave mounts somewhat loose to proper alignments on Jeep.





# INSTALLATION MANUAL

**STEP 19** | Secure all wiring using the provided zip tie tabs.

Ensure proper clearance and that the connector will reach the plug on the vehicle., and no wiring will be pinched during install.

Then, snip excess off the zip tie.



**STEP 20** | With assistance, loosely secure the bumper to the vehicle using the provided M12 hardware for the nutplate and the factory hardware for all other mounting locations.

*Note: Assistance is highly recommended to prevent injury or damage to the product/vehicle.*



# INSTALLATION MANUAL

**STEP 21** | Align the bumper left-to-right and up-and-down. Check the wings to ensure neither are touching the body of the vehicle.

The bumper should be sitting level on the vehicle and there should be consistent gaps between the wings and the body of the vehicle.

When fitted properly secure the hardware holding the bumper to the mounting brackets using a 21mm socket and 22mm wrench.



**STEP 22** | Adjust the in-and-out position of the bumper ensuring there are consistent gaps between the bumper and vehicle, and that the bumper is not touching the vehicle.

Secure provided M12 hardware on the bottom of the frame rail using a 19mm socket.

Finish securing all factory hardware using a 18mm or 21mm socket.

Torque factory hardware to 66 ft-lbs.

*Note: The tool required may vary based on trim.*





# INSTALLATION MANUAL

**STEP 23** | Secure license plate to license plate mount using the provided M6 hardware.

Double check all hardware is secure and sensors/lights work properly.



**STEP 24** | Congratulations, you are done installing your new DV8 Offroad Full Width JL Rear Bumper!!

