

SPARE TIRE DELETE

2021+ BRONCO

TSBR-01



TOOLS REQUIRED

- Ratchet
- #4 Allen Head
- 10mm Wrench
- 13mm Socket
- Panel Clip Removal Tool
- T20, T25, T30 Torx Bit
- 90 Inches of 16-18 Gauge Wire
- Assorted Crimps
- Crimping tool

SKILL LEVEL

- Novice/Intermediate
 - 1 (you) to 2 persons
- Little skill level required, you can easily install it by yourself however, additional help will be useful

TIME REQUIRED

- 2 Hour
- Time to install this should only take approximately 2 hours.

WARNINGS/CAUTIONS BEFORE STARTING INSTALLATION

Before you install this kit – Read and understand all instructions, warnings, cautions, and notes contained in this installation instruction guide. Consult your vehicle owner’s manual for proper disconnection of electrical and lifting of vehicle if required for installation of this product.

This install may require some technical skills and knowledge of basic mechanical work. If you do not feel that you are capable of performing this install please take this product to a trained professional.

After reading this guide please contact us with any questions or concerns before installing product.
Customer Service: 855-680-9595

DV8 Offroad is not responsible for any bodily injury or harm to you or your vehicle as a result of an improper install.

Proper installation of this kit required knowledge of the factory recommended procedures for removal and installation of original equipment components. We recommend that the factory shop manual and any special tools needed to service your vehicle be on hand during the installation. Installation of this kit without proper knowledge of the factory recommended procedures may affect the performance of these components and the safety of the vehicle

- Always wear eye protection when operating power tools

Inspect all contents of this package to make sure product is not damaged and all installation hardware has been included. If parts are missing from kit, please be prepared to provide the following information

1. Name of purchase location
2. Bar Code on side of box
3. Date above bar code
4. Date inside box cover



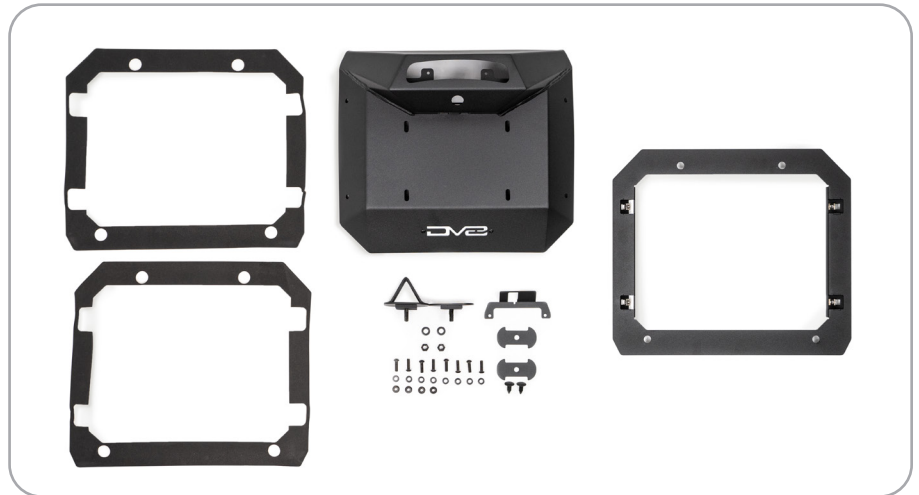
INSTALLATION MANUAL

STEP 1

Begin by unpacking all items and inspecting for missing pieces or damage. If you have any concerns, please contact the company the product was purchased from.

Hardware Included:

- (8) M6x15 Allen Head Bolts
- (12) M6 Flat Washers
- (4) M6 Nylon Nuts
- (1) M8 Flat Washer
- (1) M8 Nylon Nut
- (1) 4mm Foam Gasket
- (1) 2mm Foam Gasket



STEP 2

Remove the spare tire from the mount.



INSTALLATION MANUAL

STEP 3

Use a T30 to remove the four bolts securing the third brake light.

NOTE: Pictured is an aftermarket third brake light extension. Factory assembly has this light mounted directly to the carrier using the T30 bolts.



STEP 4

Use a T25 to remove the bolts from the third brake light assembly and separate the pieces.



INSTALLATION MANUAL

STEP 5

Use a T25 to remove the bolts securing the third brake light.



STEP 6

Use a panel clip removal tool to remove the clips securing the wiring to the assembly and unclip the wiring connector at the third brake light.

Set the light off to the side for re-installation into the delete kit.



INSTALLATION MANUAL

STEP 7

Use a T30 to remove the bolts securing the stud plate to the spare tire assembly.



STEP 8

Use a 13mm socket to remove the bolts securing the spare tire carrier to the vehicle.



INSTALLATION MANUAL

STEP 9

Use a panel clip removal tool to remove the clips securing the wiring to the assembly.

Remove the camera housing bracket and then remove the camera using a T20 bit.

Set it off to the side for installation on the tire delete kit.



INSTALLATION MANUAL

STEP 10

Using a panel clip removal tool, remove the trim pieces from the swing out door.



STEP 11

Two foam gaskets are provided in the hardware kit.

The thicker(4mm) foam gasket is installed so that is positioned between the mounting plate and the vehicle to protect against scuffing.

Place the mounting plate so the cage nuts and brackets are face down, and apply the 4mm foam.



INSTALLATION MANUAL

STEP 12

Install the mounting plate using factory hardware and a 13mm socket.

Then install the thinner(2mm) foam gasket on to mounting plate.



STEP 13

Insert third brake light in the delete plate and turn over carefully while holding the light to install the camera.



INSTALLATION MANUAL

STEP 14

Set the camera into place.

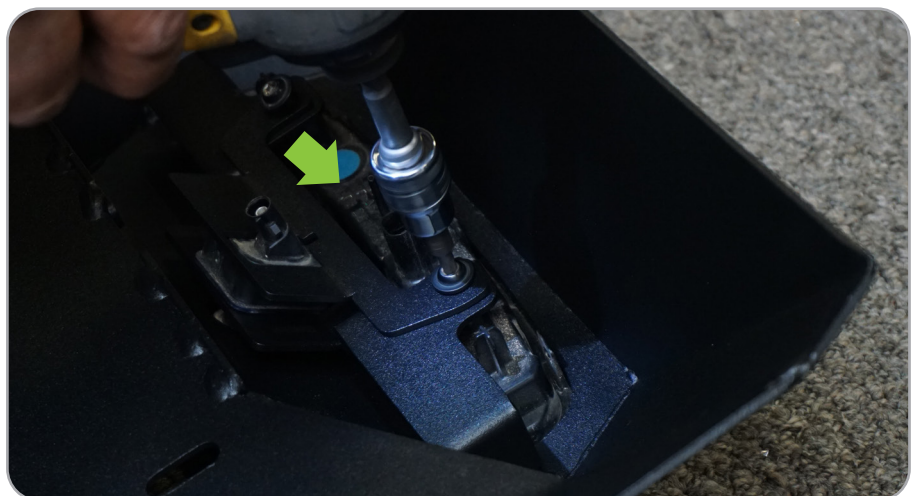


STEP 15

Install the brake light/camera mounting bracket using the factory hardware and a T25 bit.

The plate should be putting gently pressure on the camera to keep it from moving/shifting.

If the camera is not secure with the bracket in place, gently reduce the bend by pressing the bracket down on a soft flat surface. Re-install gently and check if the camera is secure. Continue adjusting as needed.



INSTALLATION MANUAL

STEP 16

Press the factory license plate light in to place from the outside of the spare tire delete kit.

It should “snap” into place.



STEP 17

Install license plate using the provided M6 hardware with a 4mm allen bit and 10mm socket/wrench.



STEP 18

Disconnect battery on the vehicle, snip the wires for the license plate light and splice in the wire extension.

Keep the wire connector for the license plate light for later use.



INSTALLATION MANUAL

STEP 19

Remove the trim piece behind the compartment for the factory jack.



STEP 20

Partially remove the trim piece to the passenger wall of the trunk closest to the tailgate.



STEP 21

Partially remove a section of the weatherstripping along the bottom of the trunk, closest to where the connection to the license plate wire was made. Feed the wire behind the bumper and weatherstripping, into the interior of the vehicle. Replace weatherstripping when finished.



INSTALLATION MANUAL

STEP 22

Feed the wire under and up the side wall trim piece until it gets to the factory wire loom and secure it with a zip tie or similar.



STEP 23

Remove the rubber grommet and feed it to the interior of the vehicle through the tailgate.



INSTALLATION MANUAL

STEP 24

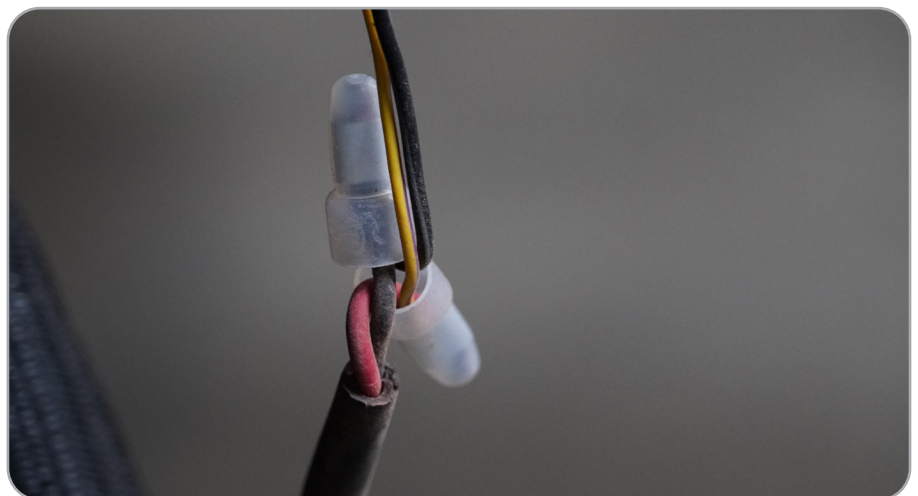
Feed the wire extension and factory wiring harness carefully through the tailgate so that it comes out through the tailgate vent.



STEP 25

Splice the factory license plate light connector to the end of the wire extension.

Then re-connect the battery.



INSTALLATION MANUAL

STEP 26

Install your preference of either the provided block off plate, or bottle opener/pod mount bracket using a 13mm socket with the provided M8 hardware.



STEP 27

If you are installing a pod light, do so at this time using the hardware provided with the light.

It is recommended to route the wiring for the pod light prior to completing installation of this product.

For our install we using a DV8 3" elite series amber pod light.

Part Number: BE3EW40W-A



INSTALLATION MANUAL

STEP 28

Install connectors for the license plate light, camera, and third brake light.

They should “clip” into place.



STEP 29

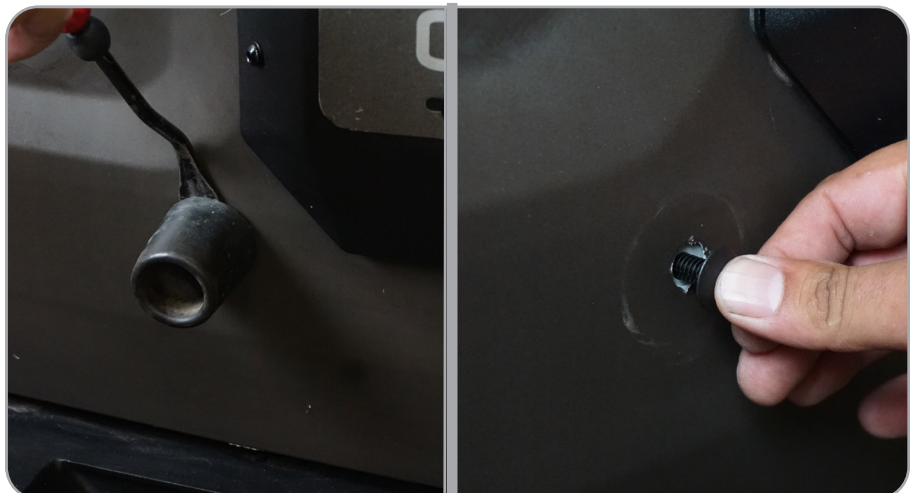
Install spare tire delete cover plate using provided M6 hardware and a #4 Allen head.



STEP 30

Remove the rubber stoppers for the spare tire by pulling on it and replace with the provided push pins.

Use a trim clip tool carefully, if necessary.



INSTALLATION MANUAL

STEP 31

Reinstall all trim pieces by sliding them into position and pressing the clips into place.



STEP 32

Double check fitment and all hardware is secure.

Congratulations! You are finished with the install of the 21+ Ford Bronco Spare Tire Delete.

