

## GMC SUPER CRUISE RELOCATION KIT

2022+ GMC SIERRA 1500 W/SUPER CRUISE PACKAGE

ABGS-01



### TOOLS REQUIRED

- T15 Torx Tool
- #4 Allen Tool
- 10mm wrench, 18mm wrench
- 7mm, 10mm, 13mm 15mm, 18mm sockets
- 12" Socket Extension
- 9/32 Drill Bit
- Dial Gauge Angle Finder
- Trim Tool

### SKILL LEVEL

- Intermediate
- 1 (you) to 2 persons

Medium skill level required, you can easily install it by yourself however, additional help will be useful.

### TIME REQUIRED

- 2.5 Hours

Time to install this should only take about two and a half Hours.

## WARNINGS/CAUTIONS BEFORE STARTING INSTALLATION

Before you install this kit — Read and understand all instructions, warnings, cautions, and notes contained in this installation instruction guide. Consult your vehicle owner's manual for proper disconnection of electrical and lifting of vehicle if required for installation of this product.

This install may require some technical skills and knowledge of basic mechanical work. If you do not feel that you are capable of performing this install please take this product to a trained professional.

After reading this guide please contact us with any questions or concerns before installing product.  
Customer Service: 855-680-9595

*DV8 Offroad is not responsible for any bodily injury or harm to you or your vehicle as a result of an improper install.*

Proper installation of this kit required knowledge of the factory recommended procedures for removal and installation of original equipment components. We recommend that the factory shop manual and any special tools needed to service your vehicle be on hand during the installation. Installation of this kit without proper knowledge of the factory recommended procedures may affect the performance of these components and the safety of the vehicle

- Always wear eye protection when operating power tools

*Inspect all contents of this package to make sure product is not damaged and all installation hardware has been included. If parts are missing from kit, please be prepared to provide the following information*

1. Name of purchase location
2. Bar Code on side of box
3. Date above bar code
4. Date inside box cover

# INSTALLATION MANUAL

Begin by unpacking all items and inspecting for missing pieces or damage. If you have any concerns, please contact the company the product was purchased from. Extra hardware may be included with the product.

## HARDWARE INCLUDED

- (7) M6x20 Allen Head Bolts
- (3) M6x25 Allen Head Bolts
- (11) M6 Nylon Lock Nuts
- (21) M6 Flat Washers



**STEP 1** | Begin by opening the hood and removing the hood latch bolts using a T15 torx tool.



## INSTALLATION MANUAL

**STEP 2 |** Use a trim tool to remove the clips that secure the intake scoop to the vehicle.

Remove the intake scoop and set it off to the side.



**STEP 3 |** Using a 10mm socket, remove the (4) bolts securing the top of the grille to the vehicle.



## INSTALLATION MANUAL

**STEP 4 |** Moving to the wheel wells, use a T15 torx tool to remove the (2) bolts that secure the inner fender to the lower fascia on both sides.



**STEP 5 |** With a firm grip, carefully, pull the front of fender flare away from the vehicle body.

**Note:** Do not remove the fender flare completely.



**STEP 6 |** Using a 7mm socket, remove the bolt that secure the lower fascia to the fender on each side.

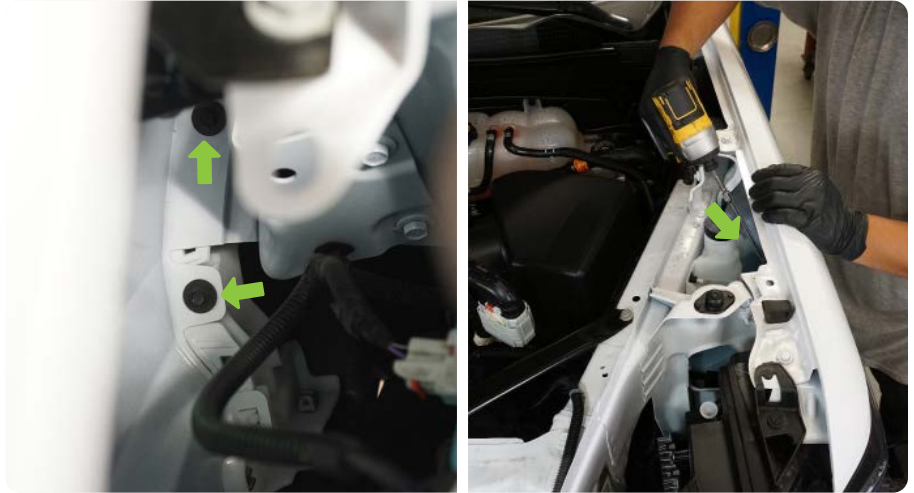




## INSTALLATION MANUAL

**STEP 7** | Using an 12" extension and a 7mm socket. Loosen the (2) bolts that secure the lower fascia on each side.

**NOTE:** Only loosen these bolts 50%.



**STEP 8** | Carefully start to pull the lower fascia away from the vehicle with a firm grip.

Use a trim tool to carefully pop the clips around the headlights.



# INSTALLATION MANUAL

---



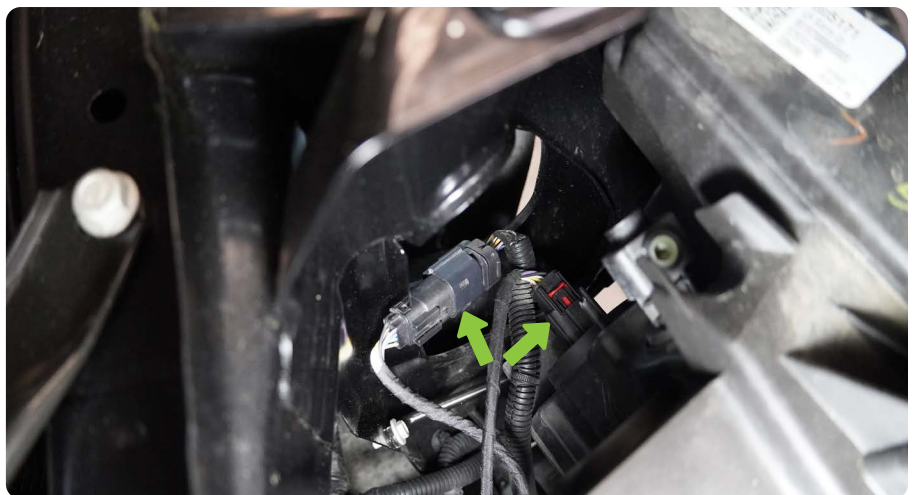
## INSTALLATION MANUAL

**STEP 9 |** Use a 10mm socket to remove the (3) lower grille bolts.

Carefully remove the grille assembly, disconnect the front camera and front camera washer fluid hose if equipped.



**STEP 10 |** If your vehicle is equipped with an illuminated grille emblem, disconnect the (2) electrical plugs behind the driver side headlight.





## INSTALLATION MANUAL

**STEP 11** | Use a 10mm socket to remove the (9) bolts that secure the upper active air grille shutter.

Slightly pull the active air grille shutter away from the vehicle to disconnect the shutters electrical plug. Depress the push tab and separate the two electrical plugs.

Remove the shutter assembly and set it off to the side.



**STEP 12** | Disconnect the bumpers wiring harness located below the passenger headlight. Pull back the red locking tab and depress the push tab to separate the two electrical plugs.



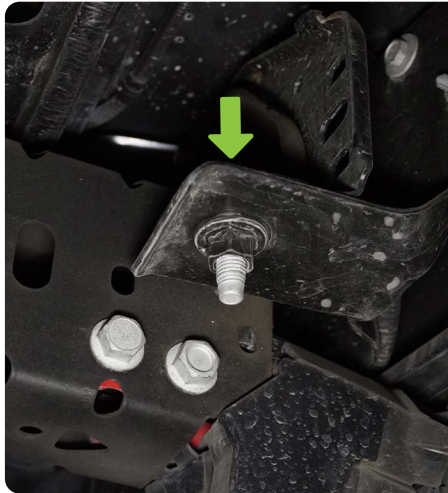


## INSTALLATION MANUAL

**STEP 13** | Moving under the front bumper, use a 15mm socket to remove the bumper supports from each side.



**STEP 14** | Use an 18mm socket to remove the (2) lower bumper mounting bolts on the inside of the frame rails.



**STEP 15** | Use a 10mm socket to remove the (4) bolts securing the bumpers lower valance .



## INSTALLATION MANUAL

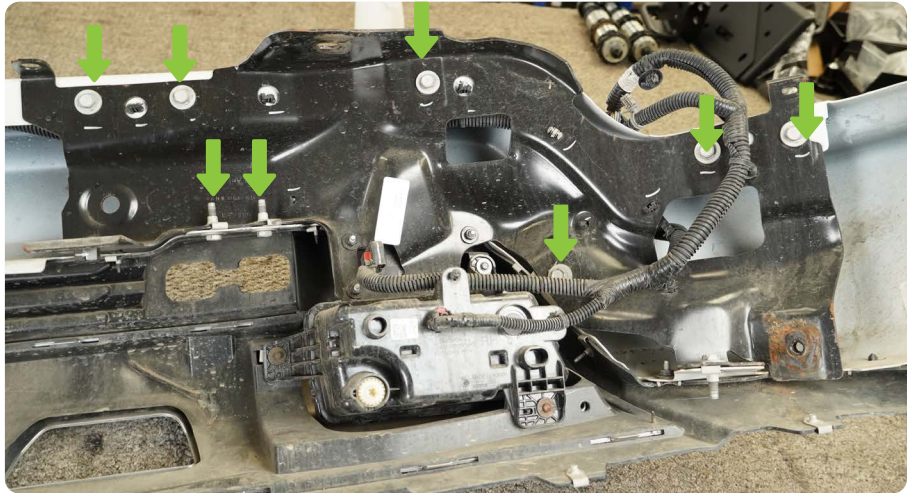
**STEP 16** | Use a 18mm socket to remove the (2) upper mounting bolts.

Remove the bumper and set it off to the side on a protect surface.



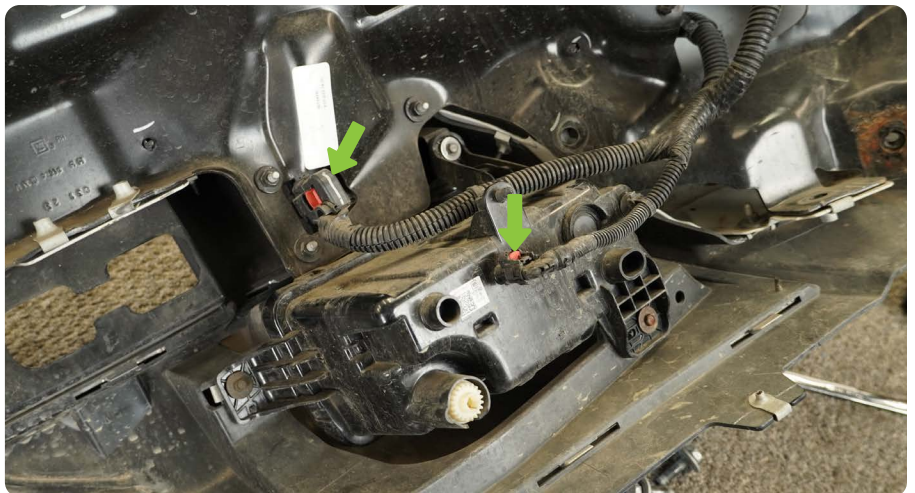
**STEP 17** | Lay the factory front bumper face down on a moving blanket or covered work bench.

Use a 13mm socket to remove the bolts securing the bumper supports.

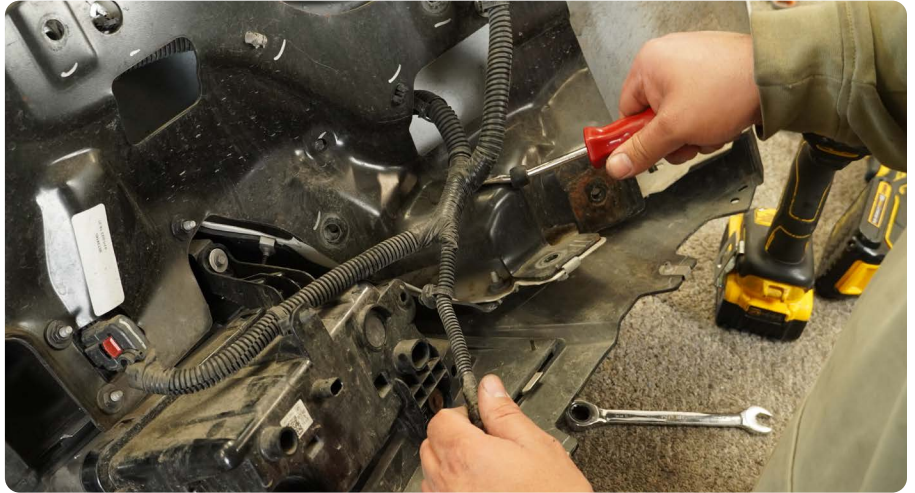


**STEP 18** | Disconnect the fog light wiring harness and the ACC harness.

Using a trim clip tool, free the harness clips from the bumper support.





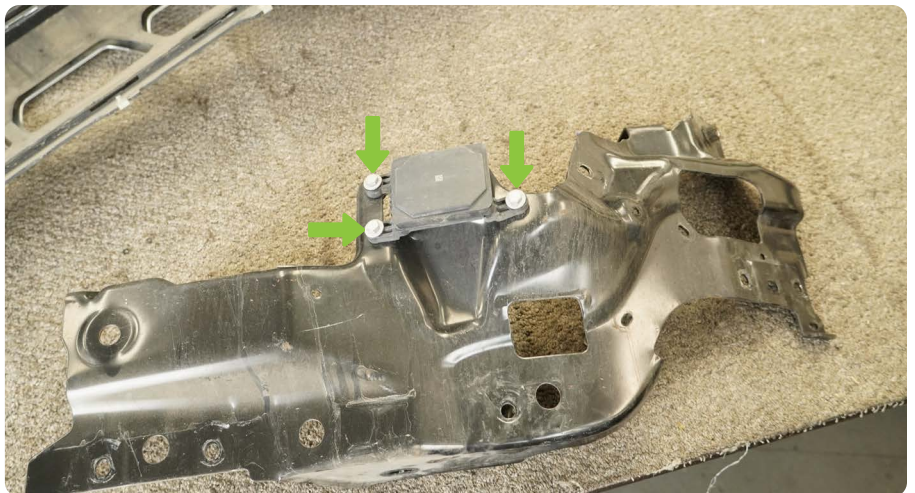


**STEP 19** | Remove the bumper support to gain access to the ACC's mounting bolts



**STEP 20** | Using a 10mm socket, remove the bolts that secure the ACC module of the bumper support.

Set the ACC module off to the side.





## INSTALLATION MANUAL

---

**STEP 21** | With the ACC module removed we can now assemble the relocation bracket.

Place the two brackets together as shown.



**STEP 22** | Using 3 of the provided M6x20 allen head bolts and the M6 hardware provided secure the two brackets together.



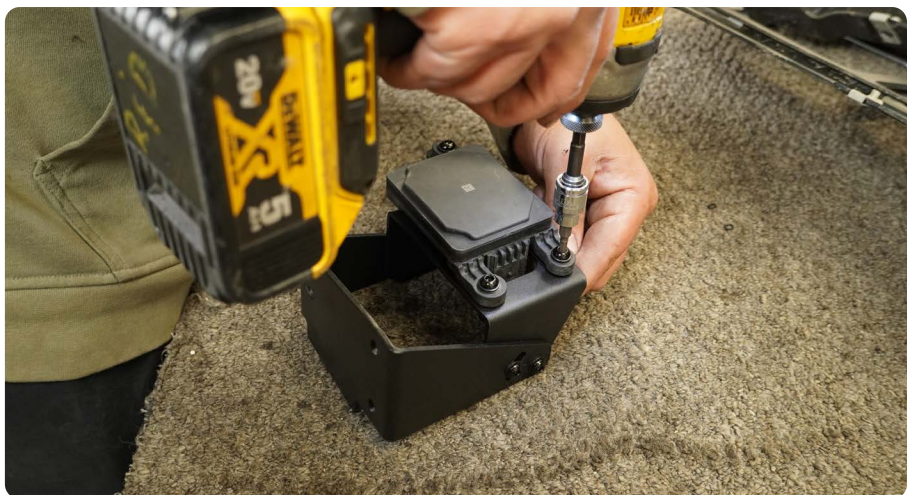
## INSTALLATION MANUAL

---

**STEP 23** | Adjust the bracket that the acc module will mount to, so that the bracket is positioned at 90 degrees. Secure all hardware using a 10mm wrench and a #4 allen tool.



**STEP 24** | Place the ACC module onto the relocation bracket kit. Using a 10mm wrench, #4 allen tool with the M6x25 allen head bolts and M6 hardware, secure module in place.





## INSTALLATION MANUAL

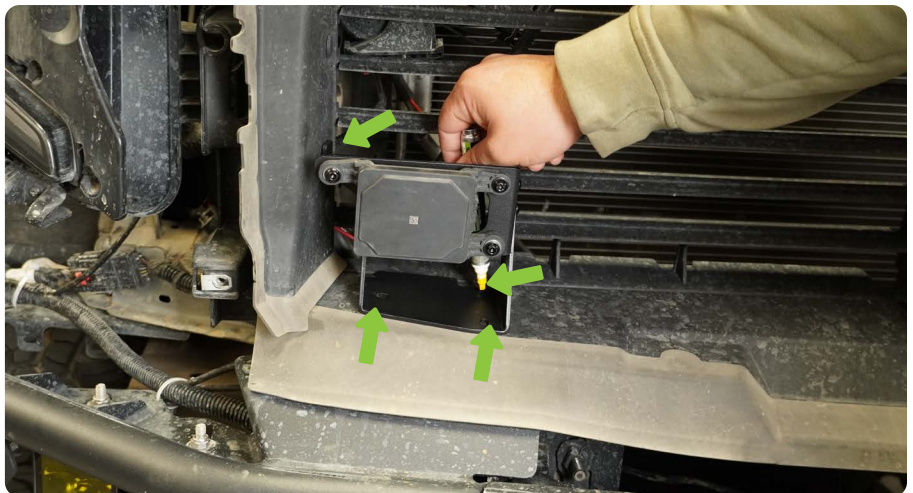
**STEP 25** | Reinstall the vehicles shutter system only.



**STEP 26** | Place the ACC module and relocation bracket onto the passengside front corner of the shutter system as shown.



**STEP 27** | Use a marker to mark the 4 holes that will need to be drilled out.





## INSTALLATION MANUAL

**STEP 28** | Using a 9/32 drill bit, drill four holes into the shutter system's shroud.

*Tech Tip: Do not apply pressure while drilling. Only drill through the shroud (1/4" thick), be careful not to drill too deep.*



**STEP 29** | Mount the relocation bracket to the shutter system shroud using the rest of the M6 hardware.



# INSTALLATION MANUAL

**STEP 30** | Ensure the ACC module is angled at 90 degrees. Adjust as needed.

The ACC must be properly angled to function correctly.

Tech Tip: It is best to use a dial gauge angle finder to ensure the ACC properly position.



**STEP 31** | Route the ACC module wiring harness behind the shutter system, below the bottom shutter.

Plug the harness into the ACC module, ensuring it is fully clicked into place.





## INSTALLATION MANUAL

---

**STEP 32** | With the grille assembly installed the ACC module should be pointing through the grille as shown.



**STEP 33** | Congratulations, installation of the DV8 Super Cruise ACC module relocation bracket is now complete.

