

MTO V2 FRONT BUMPER

2021+ FORD BRONCO

FBBR-07



TOOLS REQUIRED

- 4mm Allen Bit
- 10, 13, 15, 18, 21mm Sockets
- 10, 22mm Wrench
- T40 Torx Bit
- Zip Ties
- Trim Tool

SKILL LEVEL

- Novice/Intermediate
- 2 to 3 people

Intermediate skill level required.
Additional help will be needed
when removing and installing
bumpers.

TIME REQUIRED

- Approximately 4-4.5 Hours

Time to install this should
take about four to four and a
half hours

WARNINGS/CAUTIONS BEFORE STARTING INSTALLATION

Before you install this kit – Read and understand all instructions, warnings, cautions, and notes contained in this installation instruction guide. Consult your vehicle owner's manual for proper disconnection of electrical and lifting of vehicle if required for installation of this product.

This install may require some technical skills and knowledge of basic mechanical work. If you do not feel that you are capable of performing this install please take this product to a trained professional.

After reading this guide please contact us with any questions or concerns before installing product.
Customer Service: 855-680-9595

DV8 Offroad is not responsible for any bodily injury or harm to you or your vehicle as a result of an improper install.

Proper installation of this kit required knowledge of the factory recommended procedures for removal and installation of original equipment components. We recommend that the factory shop manual and any special tools needed to service your vehicle be on hand during the installation. Installation of this kit without proper knowledge of the factory recommended procedures may affect the performance of these components and the safety of the vehicle

- Always wear eye protection when operating power tools

Inspect all contents of this package to make sure product is not damaged and all installation hardware has been included. If parts are missing from kit, please be prepared to provide the following information

1. Name of purchase location
2. Bar Code on side of box
3. Date above bar code
4. Date inside box cover

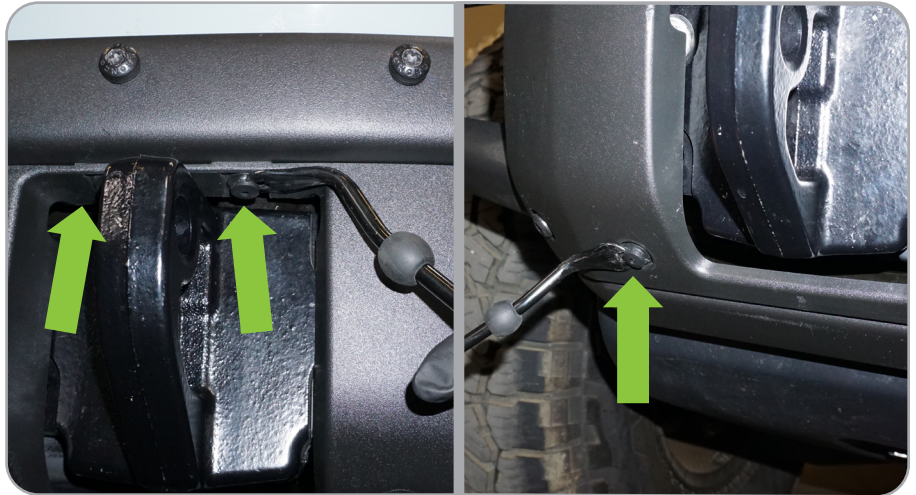


INSTALLATION MANUAL

STEP 1

REMOVAL OF FACTORY STEEL BUMPER

Begin by removing the front plastic d-ring guards. Using a screwdriver or trim clip tool, remove the (2) pins on the bottom and (2) near the top of the d-ring mount.



Pull the top half away from the Bronco and set to the side. Repeat for the other side.



STEP 2

Using a 15mm socket, loosen the (3) bolts on each side.

Note: When you do this, the bumper can become free from the vehicle and can fall. Assistance is recommended to prevent injury and damage to the product or vehicle.



INSTALLATION MANUAL

STEP 3

Once all bolts are loose, remove the plug for the fog lights and front sensors if equipped. This is located at the back end of the grill on the driver side.

If you do not have these, skip ahead to step 4.



STEP 4

Once unplugged, remove all (6) bumper bolts and d-rings mounts. Set bumper face down off to the side.

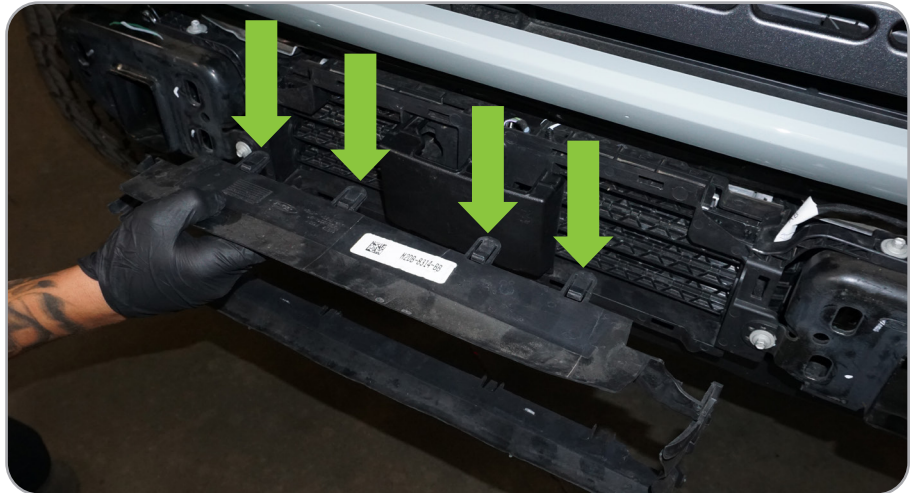
Note: When you do this, the bumper can become free from the vehicle and can fall. Assistance is recommended to prevent injury and damage to the product or



INSTALLATION MANUAL

STEP 5

Remove the rubber/plastic shroud under the grill by pulling the tabs on the shroud away (up/down) from vehicle while pulling the shroud from the vehicle.



STEP 6

If you do not have adaptive cruise control, remove the plastic cover by pushing the clip on the top down while pulling away from Bronco, and set off to the side.

Note: If you have adaptive cruise control, you will need to relocate the module using our ABBR-01 to retain the functionality (Adaptive Cruise Control Relocation Bracket). If you are not relocating the ACC, remove the bolts securing it with a 8mm socket and set it off to the side.



STEP 7

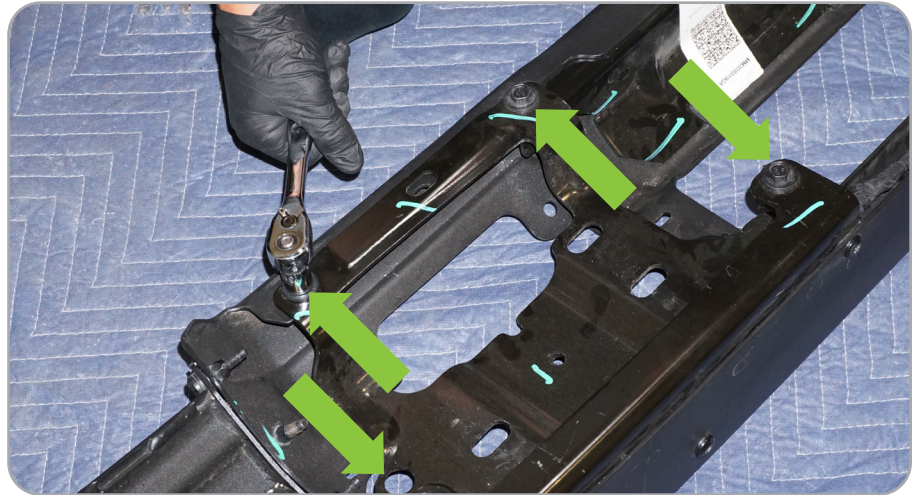
Reach behind each bumper mount on the frame rail and remove the factory nut plate.



INSTALLATION MANUAL

STEP 8

If equipped with sensors, remove the main bumper brackets from the backside of the bumper using a 13mm socket, remove the (4) hex head bolts.



STEP 9

Next, using a T40 torx bit, remove the (6) bolts securing the mount in place. Once removed, gently separate mount from bumper, and set off to the side.



INSTALLATION MANUAL

STEP 10

To remove the wire harness, using a flat head screwdriver or pin puller, remove all the retaining clips securing the harness to the bumper.



STEP 11

To remove the sensors, spread the two tabs on the sensor bezel and gently pull up on the sensor. Make sure that the rubber ring around the sensor head remains on the sensor.



STEP 12

Lastly, gently squeeze the same two tabs on the sensor bezel and push the backside of the sensor to remove the bezel. Continue the same steps on the remaining sensors.



INSTALLATION MANUAL

STEP 1

INSTALLATION OF DV8 BUMPER

Begin by unpacking all items and inspecting for missing pieces or damage. If you have any concerns, please contact the company the product was purchased from.

Hardware Included:	(6) M12 Spring Washers
(6) M14x35mm Bolts	(6) M12 Enlarge Washer
(6) M14 Lock Nuts	(4) M6x20mm Bolts
(12) M14 Washers	(4) M6 Lock Nuts
(6) M12x30mm Bolts	(8) M6 Washers
(6) M12 Clip Nuts	



STEP 2

Place the center section of the bumper face down on a soft surface to prevent any damage to the coating.



STEP 3

Install provided foam onto the mounting surface of each wing.



INSTALLATION MANUAL

STEP 4

Using the M14 hard, mount the wings to the center section of the bumper. Ensure the top and face are flush.

Using a 21 and 22mm socket/wrench secure wings until tight.



STEP 5

To install the bull bar, install the provided foam, and mount the bar using the provided M6 hex head bolts.

Secure using a 10mm socket and wrench.



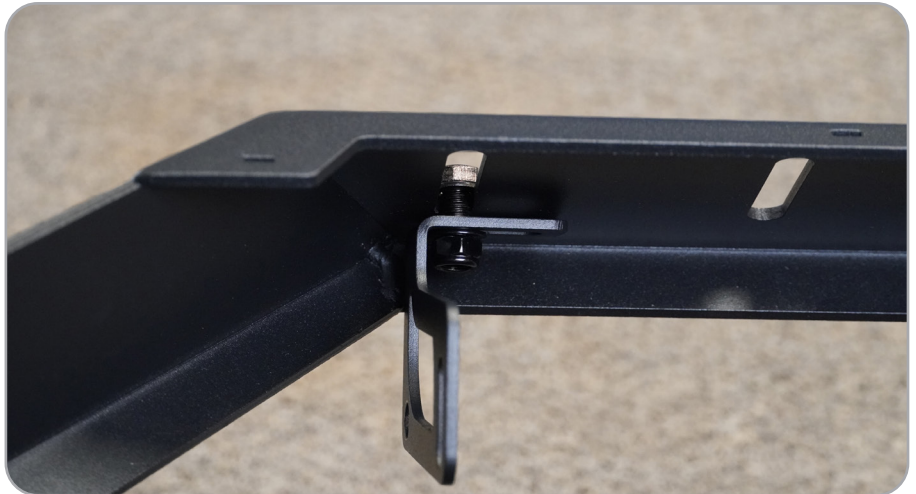
INSTALLATION MANUAL



STEP 6

Once the bull bar is mounted, if you are running a light bar, mount the provided brackets to the bull bar using the M8 bolts and 13mm socket and wrench.

Note: Orientation of the brackets may differ depending on the size and make of light bar.



STEP 7

Install the light bar to the brackets using the hardware provided with the light. Align bar onto bracket and secure.

Note: We are using a DV8 20" Dual Row Elite light bar for this install.



INSTALLATION MANUAL

STEP 8

If running a 20" single row behind the mesh on the center portion of bumper, using the hardware provided with the lights, mount the brackets to the light as shown.



STEP 9

Using the provided M6 hardware, secure the light bar to the bumper (2) per side. Using a #4 and 10mm wrench to secure the hardware.



INSTALLATION MANUAL

STEP 10

The wings of the bumper can accept (2) 3" pod lights. Using the factory hardware provided with the light, mount them to each wing and secure.



STEP 11

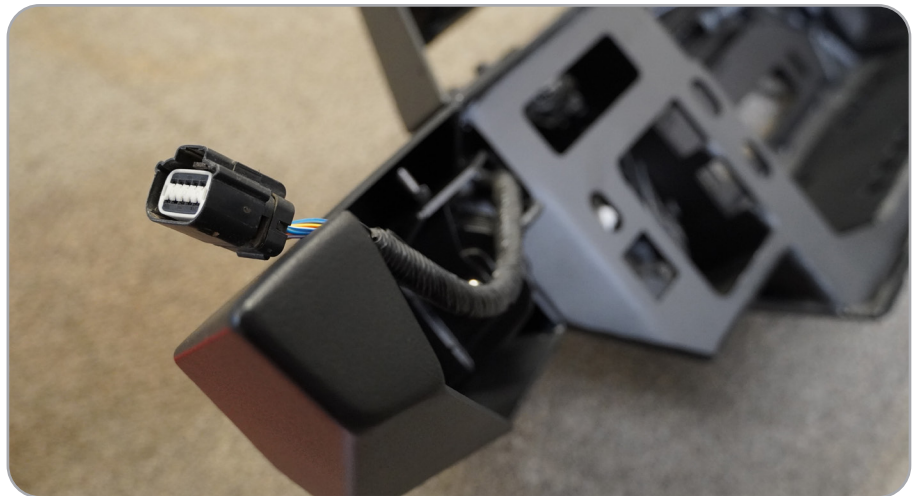
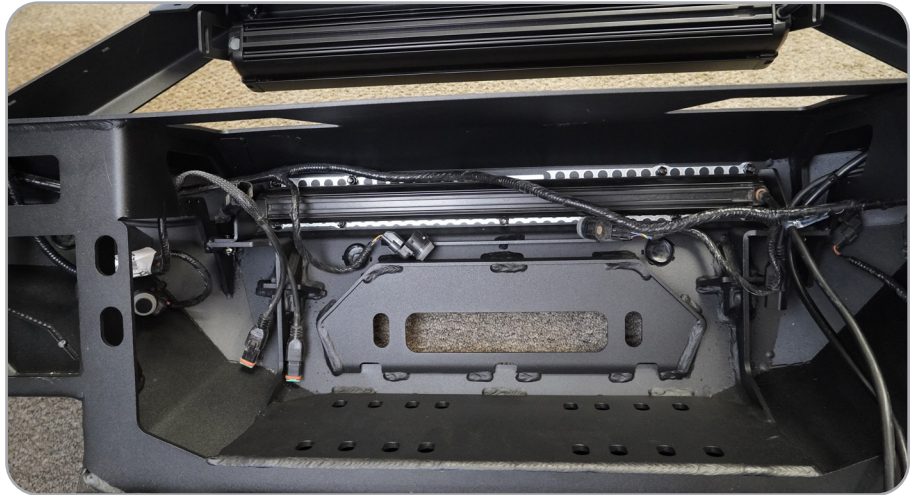
Once lights are installed, using the built in zip tie tabs, secure wiring in the bumper.



INSTALLATION MANUAL

STEP 12

If equipped with front parking sensors, lay out the harness and route the sensors near corresponding plug opening and ensure that the main plug for the harness is laying on the driver side.



INSTALLATION MANUAL

STEP 13

The sensor bezels on the capable bumper are slightly different and may require trimming.

Reference the bezel for correct placement if you are unsure of where to install them. These are keyed for installation.

Determine if the sensor bezels need to be trimmed for installation on the DV8 Bumper by placing the bezels up to the corresponding mounting hole for a fitment check. We had to trim these tabs down slightly to fit the bumper.

Trim conservatively and double check fitment after each cut to ensure you do not cut excessive material.

Example: “FOR” means “Front Outer Right”

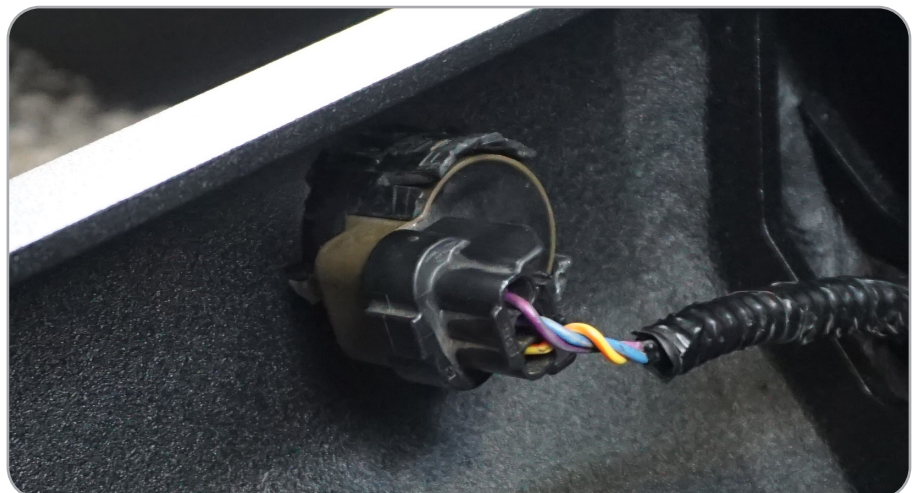
If not equipped with sensors, use provided sensor plugs.

Tip: Apply silicone if necessary to the lip of the bezel during installation if necessary.

STEP 14

Press the sensors into their bezels while holding the bezel from the front until they are secure. They should “clip” into place.

If you do not have sensors, skip to the next step.



INSTALLATION MANUAL

STEP 15

With the harness installed, using the provided zip tie mounts, secure the wiring.

If running the DV8 camera relocation (ABBR-03), a new main camera mount is included with this bumper. Use this bracket and continue with the ABBR-03 install guide.

If you are not running a camera relocation, this bracket will not be used.



STEP 16

If running a winch, install the fairlead using hardware provided with the fairlead.



STEP 17

With the fairlead installed, place the winch inside of the bumper and secure using the hardware provided with the winch.





STEP 18

Install the M12 nut clips onto the mounting plates by pressing them until they “click” into place. They should move around for adjustment.

Note the direction they are installed.



INSTALLATION MANUAL

STEP 19

With all the wires secured/out of the way of the mounts, with assistance use the provided M12 hardware and mount the bumper onto the Bronco. Loosely install hardware.



STEP 20

With assistance, adjust the bumper until it is even against the lower valance of the grille. Using a 18mm socket, secure the bumper bolts.



INSTALLATION MANUAL

STEP 21

With the bumper mounted, plug in the main front harness located on the driver side under the grille.



STEP 22

Finish wiring the winch and any added lights and double check all hardware is secure.

Congratulations, you are finished the install of the DV8 Bronco MTO V2 bumper!

