

SILVERADO 2500/3500 SPEC SERIES BUMPER

2024+ CHEVY SILVERADO 2500/3500
FBCS2-04



TOOLS REQUIRED

- + T15 Torx
- + #4, #5, #8 Allen tool/socket
- + 10mm, 18mm, 19mm, 22mm wrenches
- + 12" Socket Extension
- + Trim Tool
- + Safety Glasses
- + 7mm, 10mm, 13mm, 15mm, 18mm, 19mm, 21mm sockets
- + Flush Cutters
- + Cutting tool (box knife, etc)

SKILL LEVEL

- + Novice/Intermediate
 - + 1 (you) to 2 persons
- Little skill level required, you can easily install it by yourself however, additional help will be useful to prevent injury or damage.

TIME REQUIRED

- + Approximately 4.5 Hours

WARNINGS/CAUTIONS BEFORE STARTING INSTALLATION

Before you install this kit – Read and understand all instructions, warnings, cautions, and notes contained in this installation instruction guide. Consult your vehicle owner's manual for proper disconnection of electrical and lifting of vehicle if required for installation of this product.

This install may require some technical skills and knowledge of basic mechanical work. If you do not feel that you are capable of performing this install please take this product to a trained professional.

After reading this guide please contact us with any questions or concerns before installing product.
Customer Service: 855-680-9595

DV8 Offroad is not responsible for any bodily injury or harm to you or your vehicle as a result of an improper install.

Proper installation of this kit required knowledge of the factory recommended procedures for removal and installation of original equipment components. We recommend that the factory shop manual and any special tools needed to service your vehicle be on hand during the installation. Installation of this kit without proper knowledge of the factory recommended procedures may affect the performance of these components and the safety of the vehicle

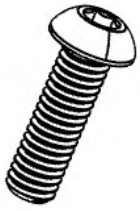
• Always wear eye protection when operating power tools

Inspect all contents of this package to make sure product is not damaged and all installation hardware has been included. If parts are missing from kit, please be prepared to provide the following information

1. Name of purchase location
2. Bar Code on side of box
3. Date above bar code
4. Date inside box cover

HARDWARE INCLUDED

Begin by unpacking all items and inspecting for missing pieces or damage. If you have any concerns, please contact the company the product was purchased from. Extra hardware may be included with the product.



(4) M6x20 Allen Bolts



(4) M6 Nylock Nuts



(8) M6 Flat Washer



(14) M12 Nylock Nuts



(32) M12 Flat Washer



(4) M12 Oversize Washer



(8) M12x30 Allen Bolts



(6) M12x30 Hex Bolts



(4) M12x35 Hex Bolts



(4) M12x140x35 Hex Bolts

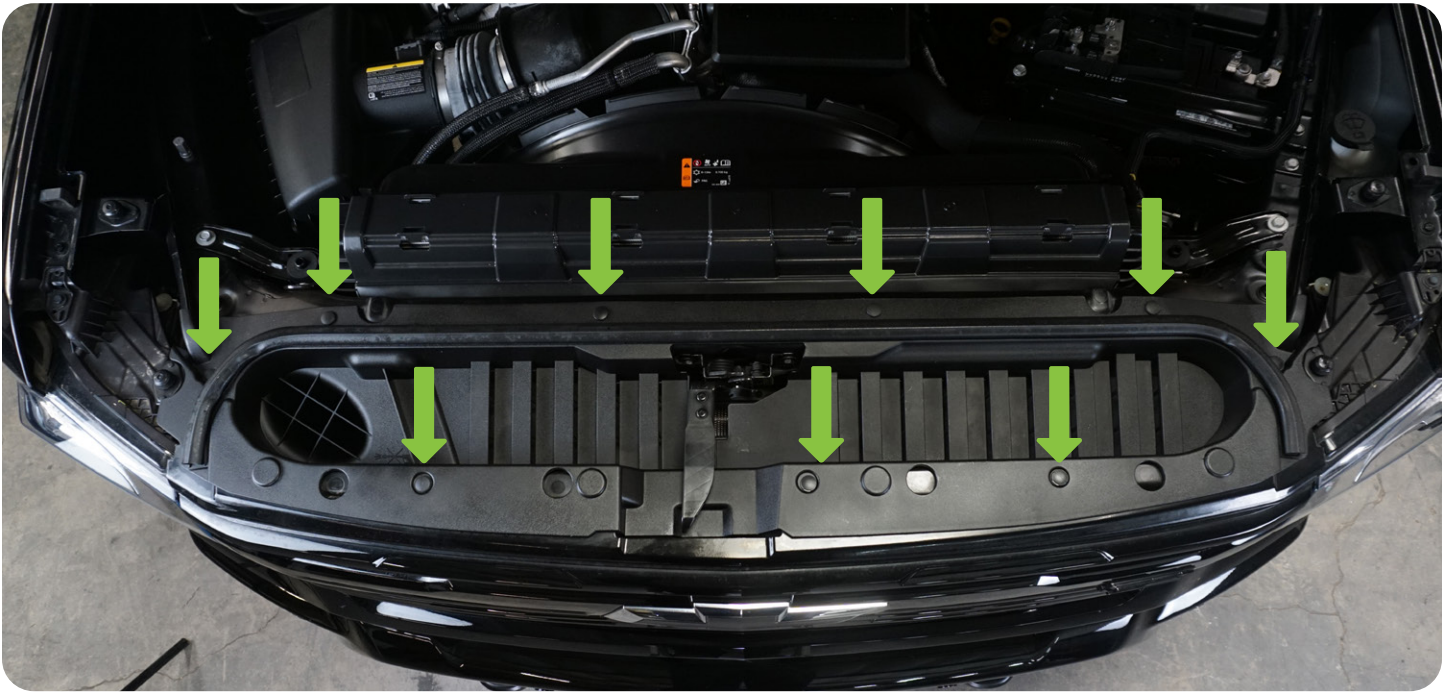


(8) M12 Nutclips

PARTS INCLUDED



STEP 1 | USE A TRIM TOOL TO REMOVE THE (9) CLIPS HOLDING THE RADIATOR TOP COVER.

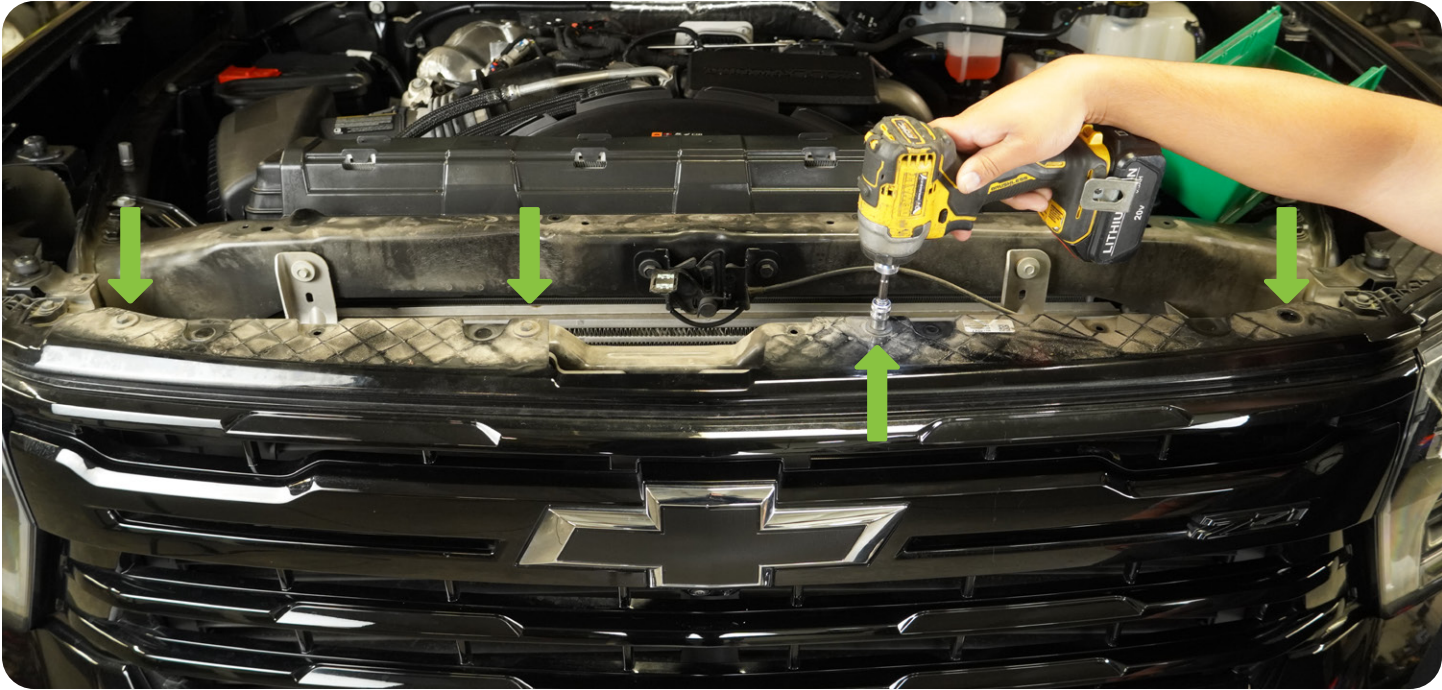


STEP 2 | USING A #4 ALLEN TOOL, REMOVE THE HOOD LATCH HANDLE BEFORE REMOVING THE RADIATOR TOP COVER.





STEP 3 | USING A 10MM SOCKET, REMOVE THE (4) TOP BOLTS HOLDING TO THE GRILLE.



STEP 4 | REMOVE THE (2) TORX BOLT ON THE INNER WHEEL WELL WITH A T15 TORX BIT.



STEP 5 | CAREFULLY PULL BACK ON THE FENDER TO UNCLIP IT FROM THE BODY, EXPOSING A 7MM BOLT. REPEAT PROCESS TO OTHER SIDE.

ENSURE TO TAKE YOUR TIME AND PULL STRAIGHT BACK TO AVOID BREAKING ANY CLIPS.



STEP 6 | REMOVE THE BOLT USING 7MM SOCKET. REPEAT PROCESS ON OTHER SIDE.

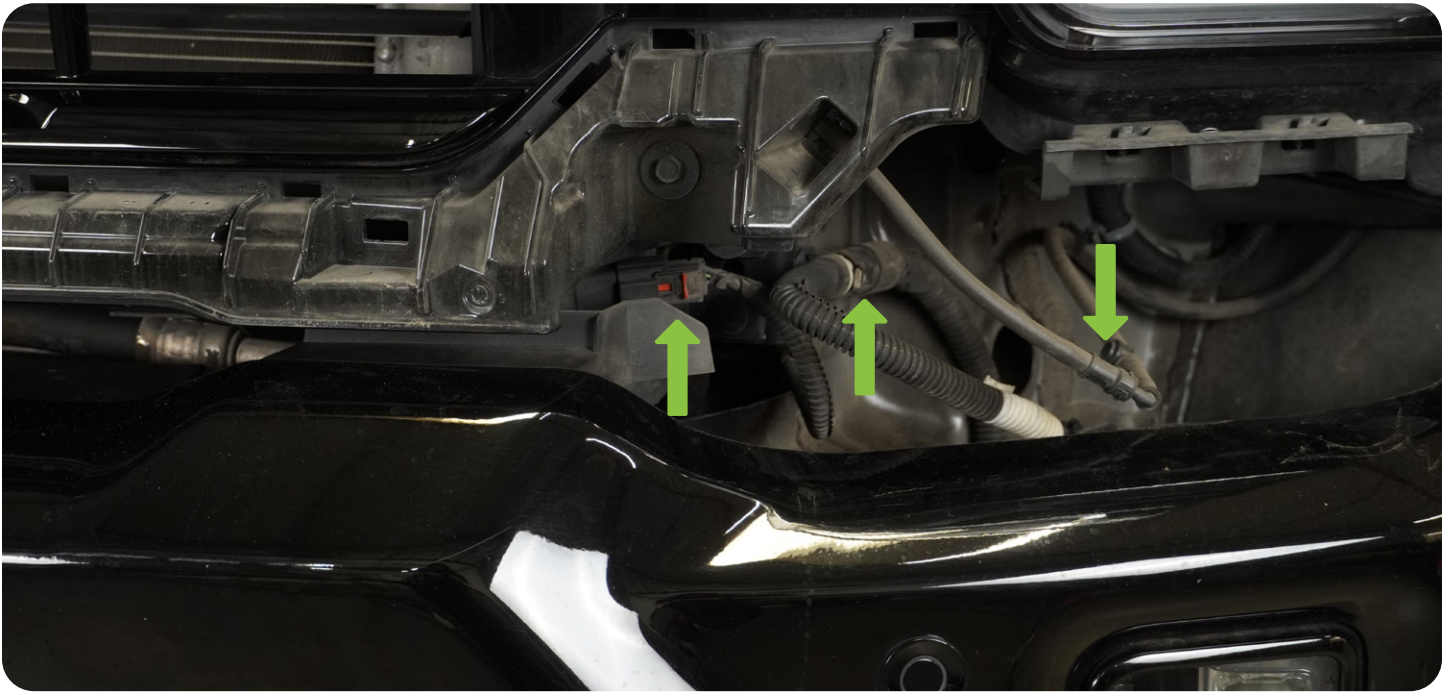


STEP 7 | ONCE THE BOLTS ARE REMOVED, CAREFULLY PULL THE BODY PANEL AND REMOVE PANEL. ENSURE TO TAKE YOUR TIME AND PULL STRAIGHT BACK TO AVOID BREAKING ANY CLIPS.

NOTE: SOME WILL COME AS A ONE PIECE PANEL. WE RECOMMEND HAVING A SECOND PAIR OF HANDS TO HOLD ONE END TO AVOID DAMAGE TO THE PANEL.



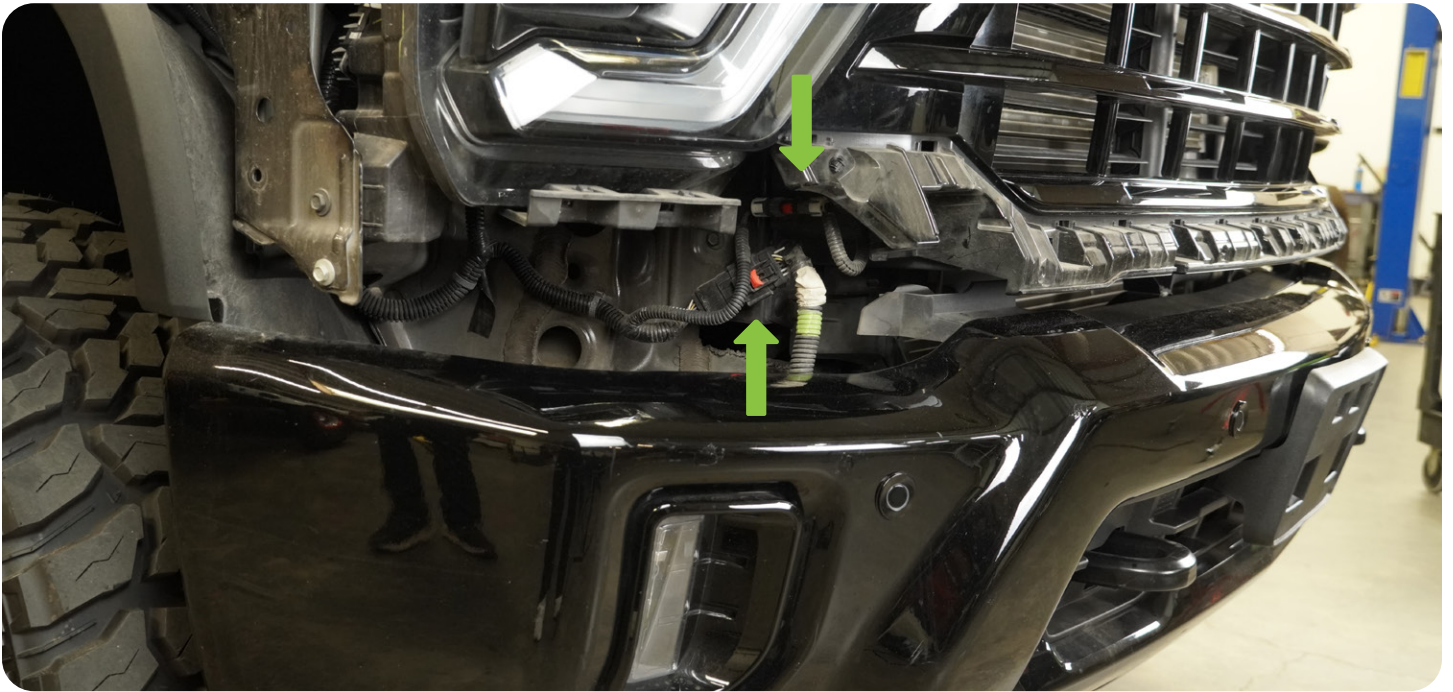
STEP 8 | ON THE DRIVER SIDE, LOCATE AND UNPLUG GRILLE CONNECTOR, VACUUM LINE, AND (IF EQUIPPED) BLOCK HEATER CONNECTOR.



STEP 9 | REMOVE THE (2) NUTS ON THE GRILLE/FASCIA USING A 10MM SOCKET.



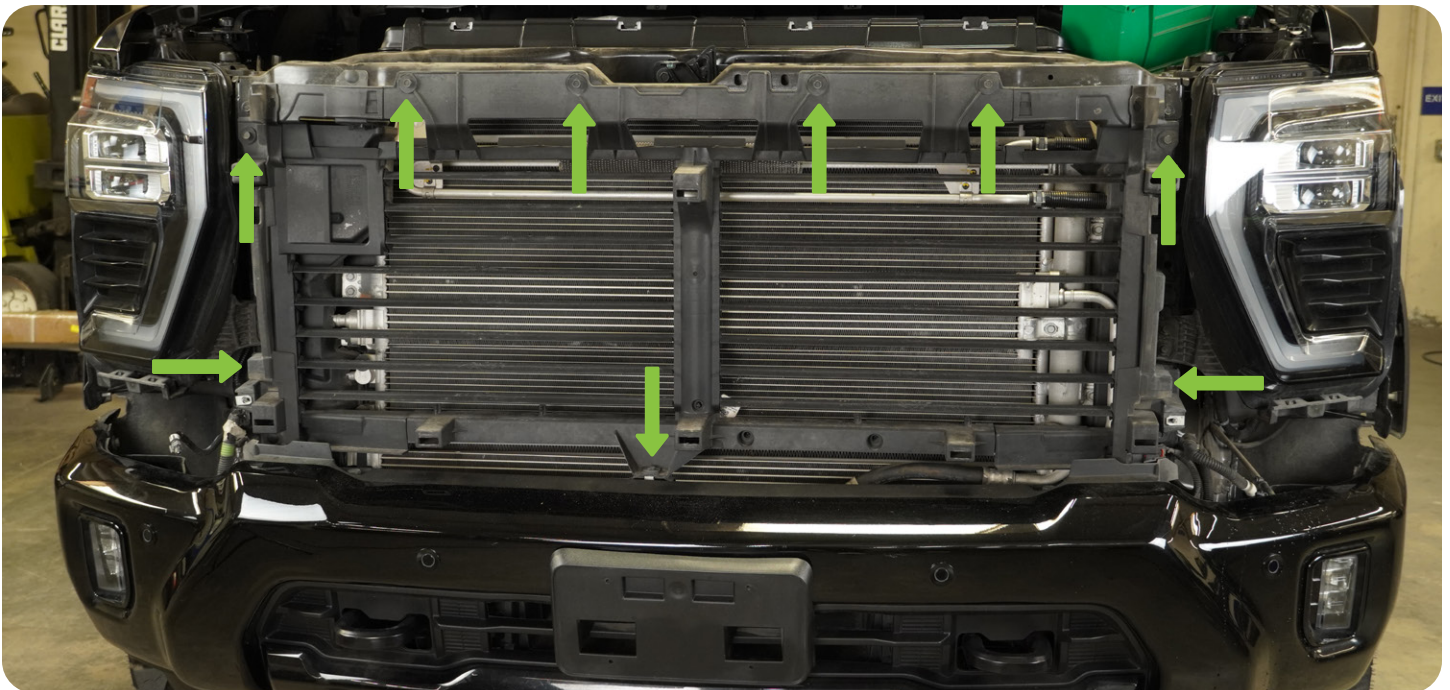
STEP 10 | ON PASSENGER SIDE, UNPLUG YOUR CAMERA CONNECTOR AND PARKING SENSOR CONNECTOR.



STEP 11 | REMOVE GRILLE/FASCIA AND SET ASIDE.



STEP 12 | USING A 10MM SOCKET, REMOVE THE (9) BOLTS HOLDING THE RADIATOR SHUTTER ASSEMBLY.





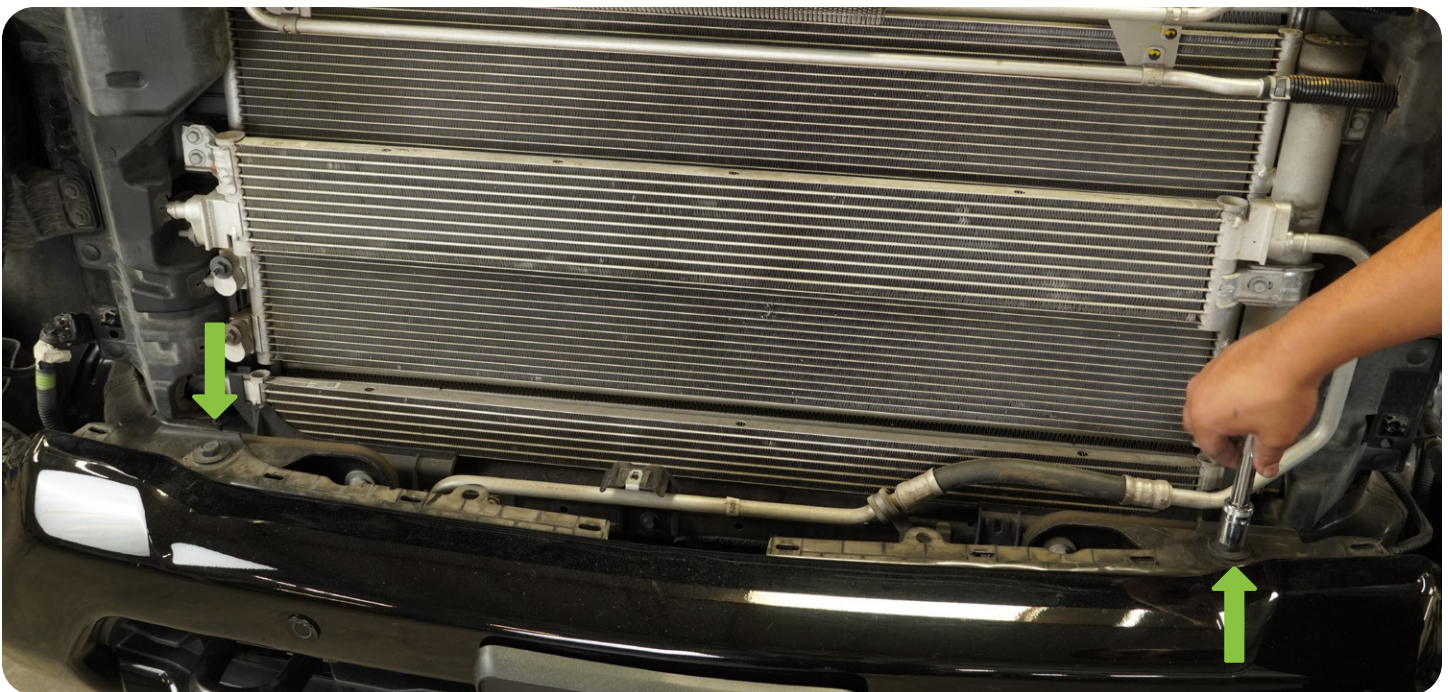
STEP 13 | REMOVE SHUTTER ASSEMBLY.



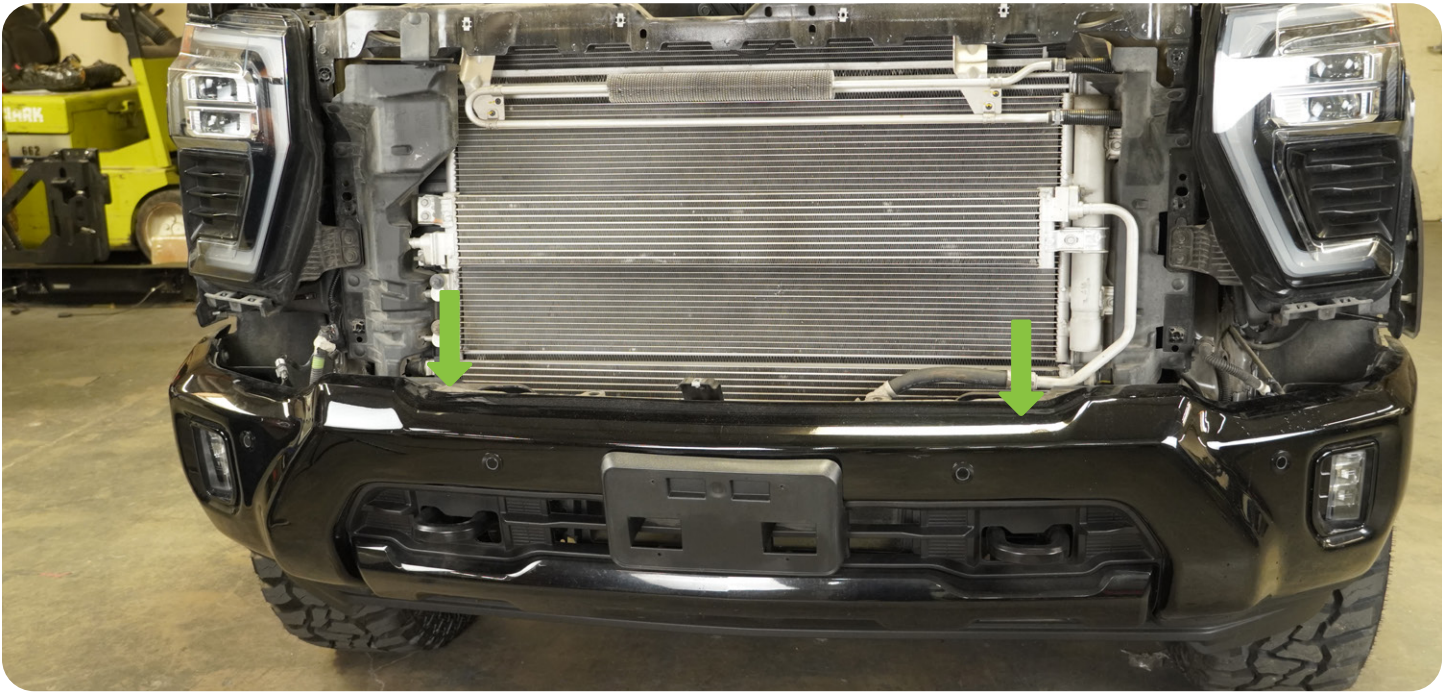
STEP 14 | IF EQUIPPED, REMOVE THE PLASTIC ON TOP OF THE BUMPER TO REACH THE BUMPER BOLTS.



STEP 15 | USING AN 18MM SOCKET, REMOVE THE (2) BOLTS ON THE BUMPER.



STEP 16 | USING AN 18MM SOCKET AND EXTENSION, REMOVE THE (4) BOLTS HOLDING THE BUMPER TO THE FRAME HORNS.



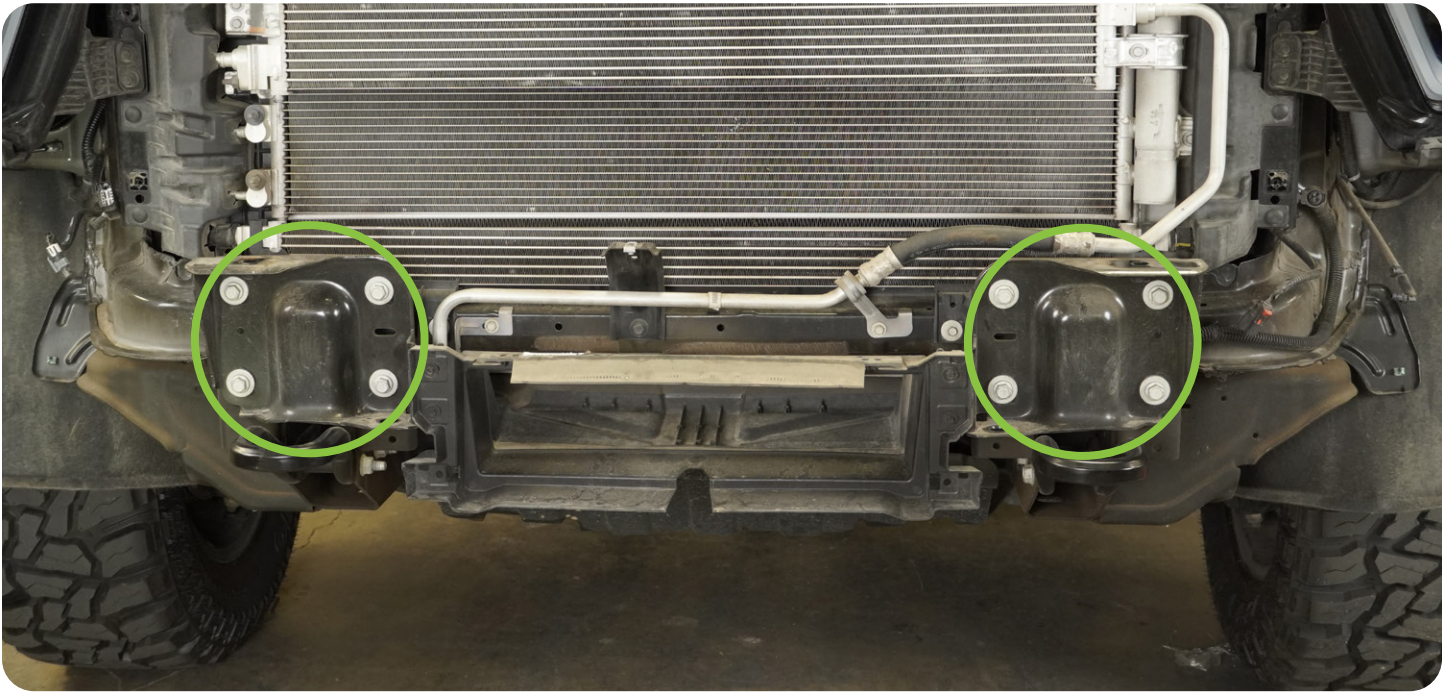
STEP 17 | UNDERNEATH THE VEHICLE, USE A 15MM SOCKET TO REMOVE THE (4) TOTAL BOLTS ON THE BUMPER BRACKETS ON BOTH SIDES.



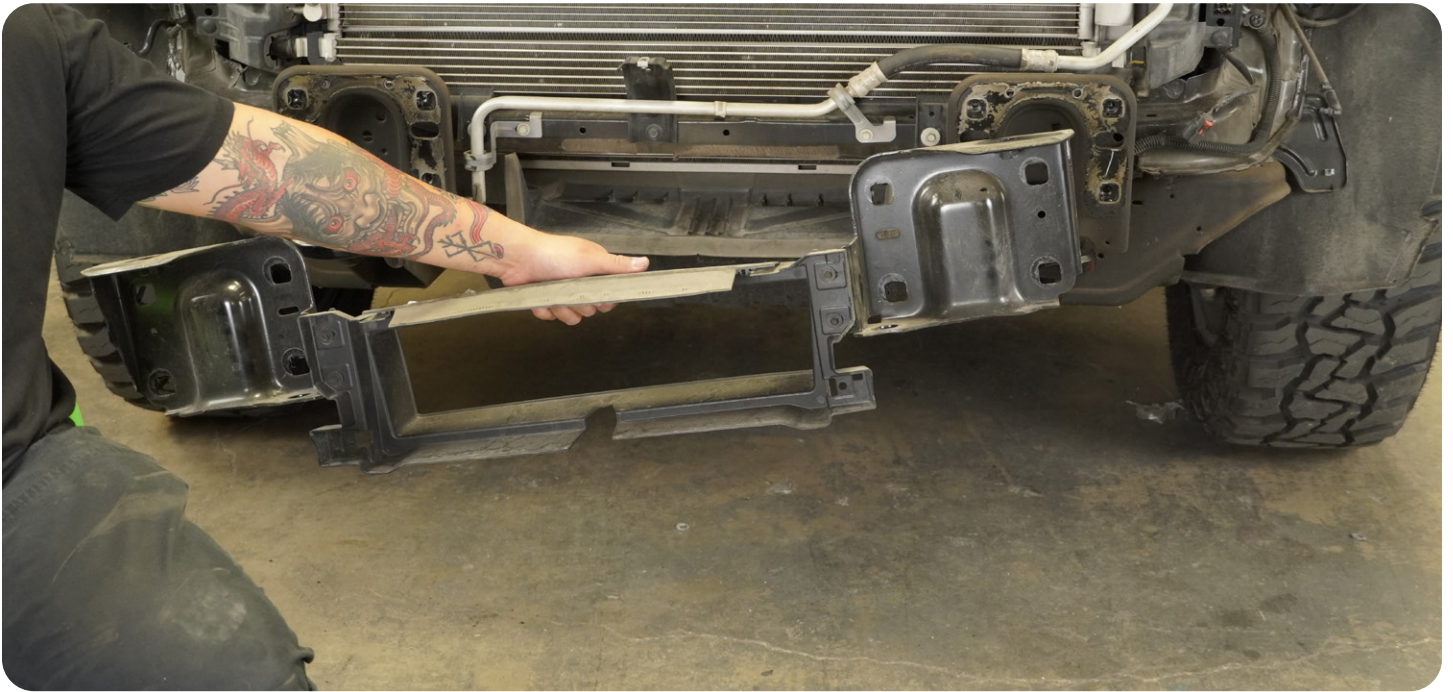
STEP 18 | REMOVE BUMPER AND SET OFF TO THE SIDE.



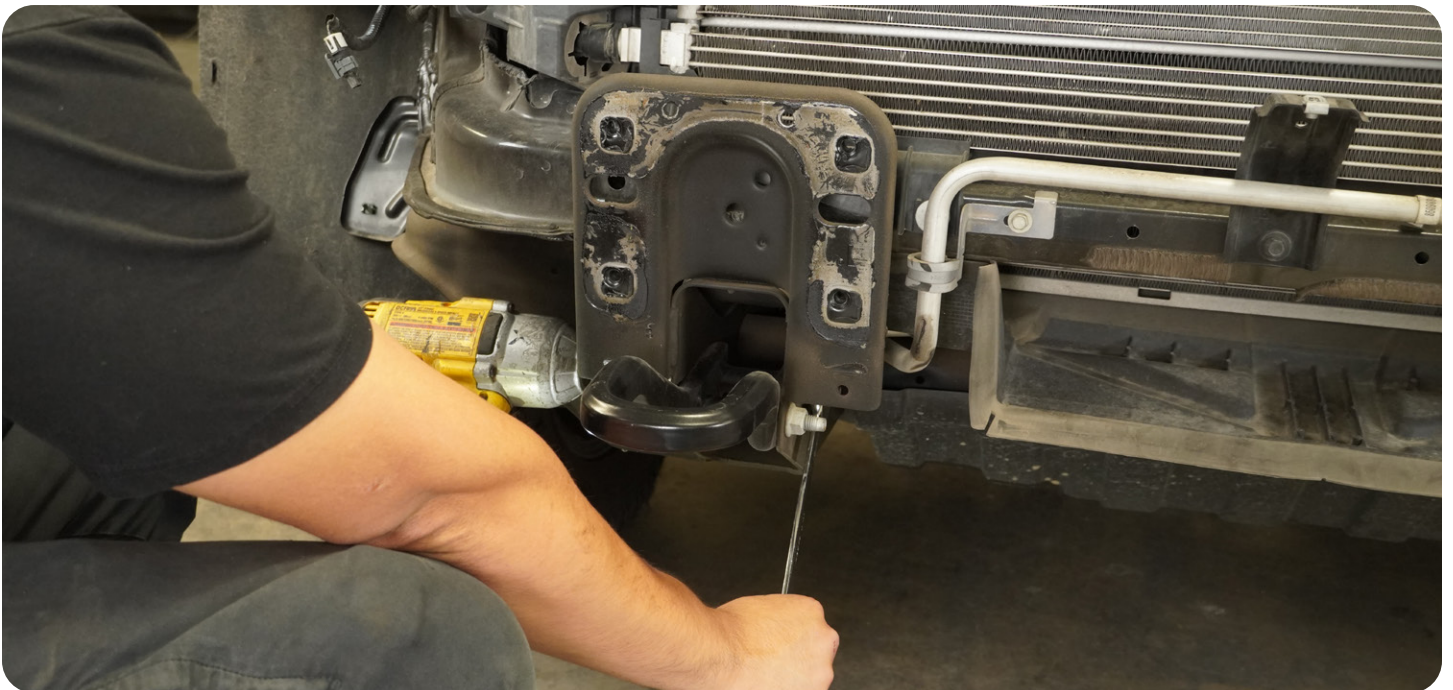
STEP 19 | USING A 15MM SOCKET, REMOVE THE (4) BOLTS ON EACH SIDE TO REMOVE BUMPER BRACKET.



STEP 20 | REMOVE BUMPER BRACKET.



STEP 21 | USING 15MM SOCKET AND WRENCH, REMOVE THE BOLTS HOLDING OE TOW HOOKS.





STEP 22 | REMOVE WIRE HARNESS CLIPS ON THE DRIVER SIDE INNER FRAME HORN FOR WINCH ASSEMBLY CLEARANCE.

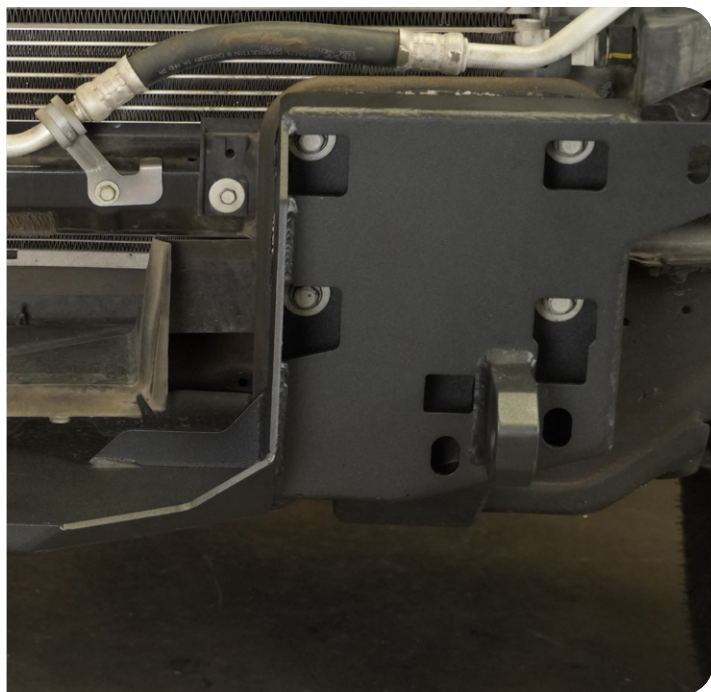
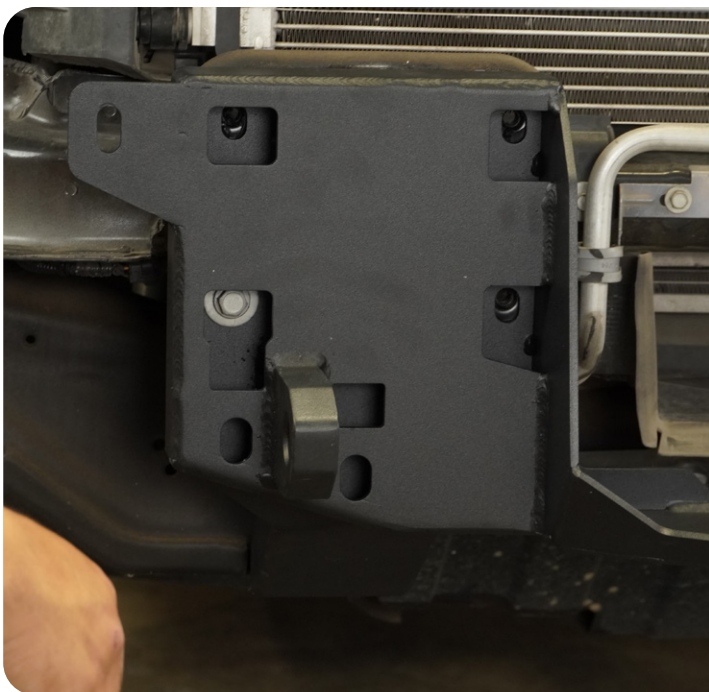


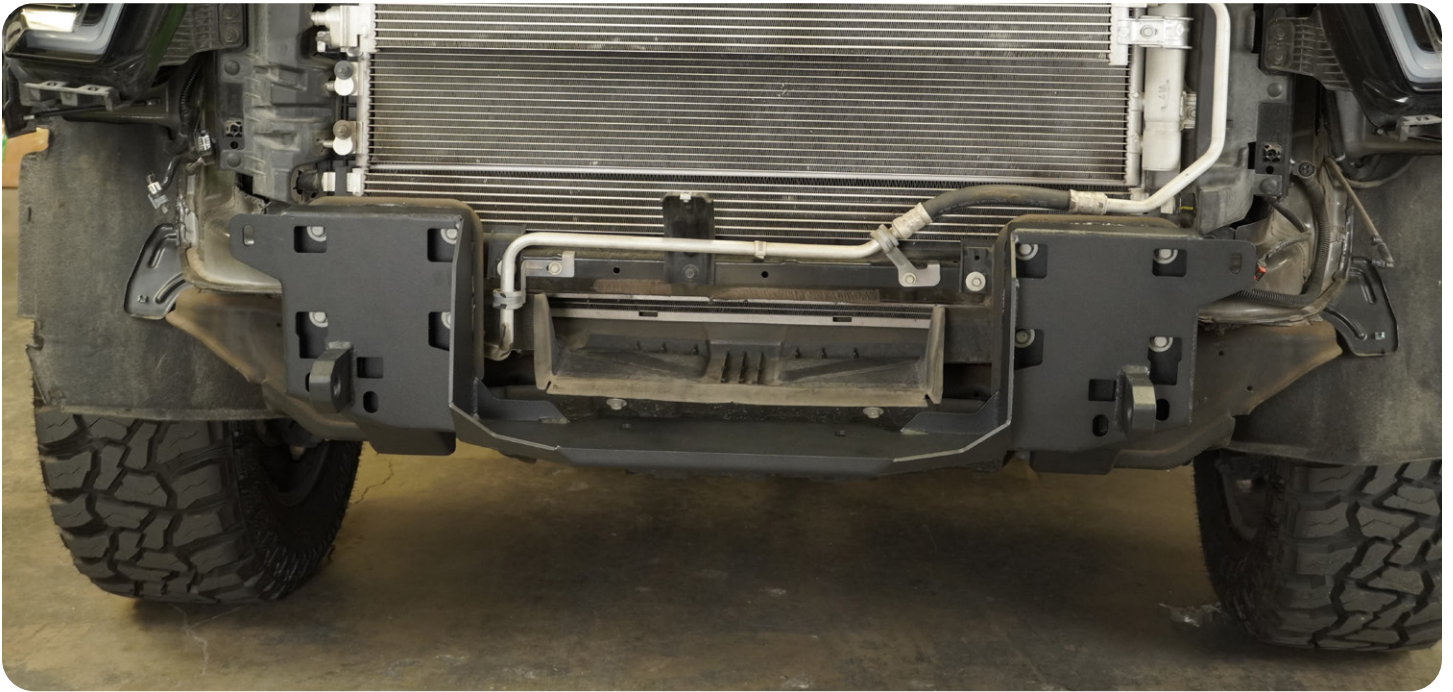
STEP 23 | INSTALL OUR WINCH MOUNT TO THE VEHICLE.

NOTE: SECOND PAIR OF HANDS WILL BE RECOMMENDED TO AVOID DAMAGE TO THE VEHICLE AND PERSONAL INJURY.



STEP 24 | USING A 15MM SOCKET, USE THE (8) OE BOLTS TO INSTALL THE WINCH MOUNT/BUMPER BRACKET TO THE FRAME.





STEP 25 | INSTALL THE (2) M12 NUTCLIPS ON BOTH SIDES OF THE BUMPER BRACKET.



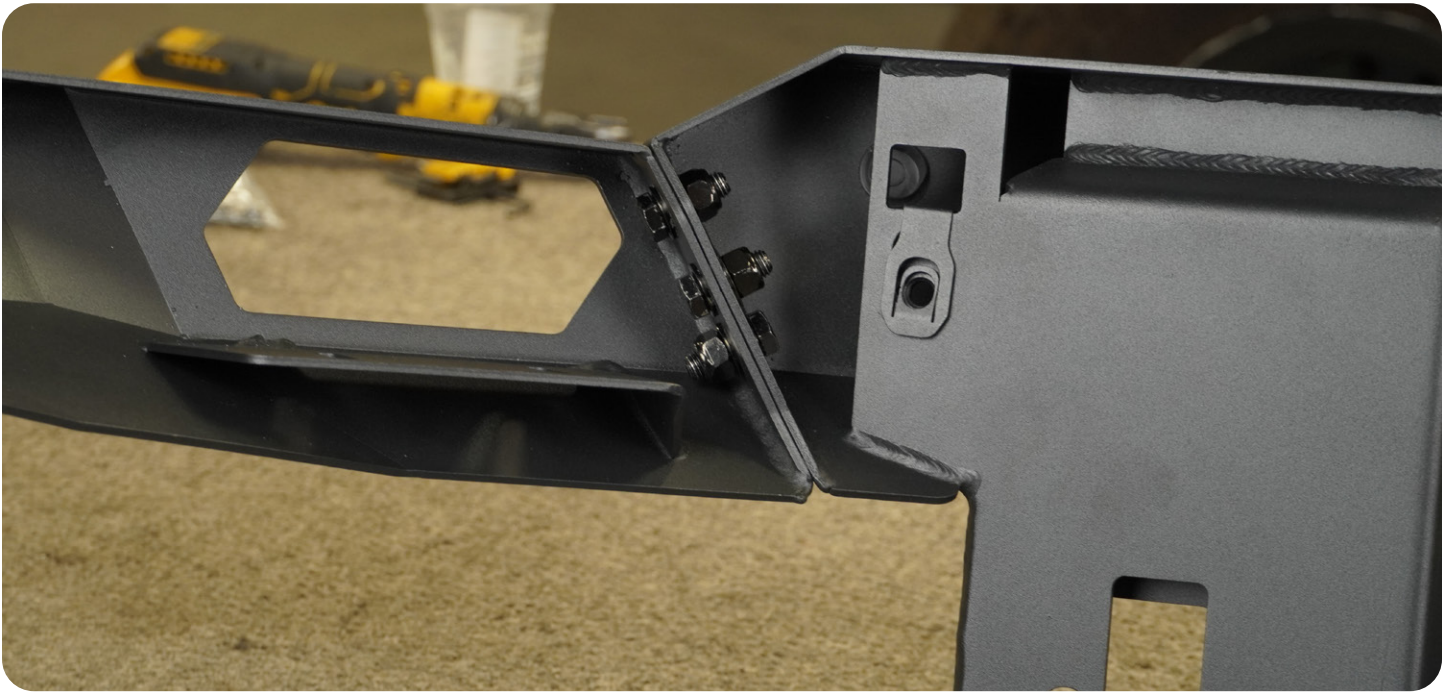
STEP 26 | ASSEMBLING YOUR BUMPER. INSTALL THE PROVIDED FOAM TO THE SIDES OF THE BUMPER WHERE THE WINGS WILL BE ATTACHED.



STEP 27 | USING A 18MM WRENCH AND 19MM WRENCH/SOCKET, LOOSELY INSTALL (3) M12X35 BOLTS, WASHERS, AND NUTS.

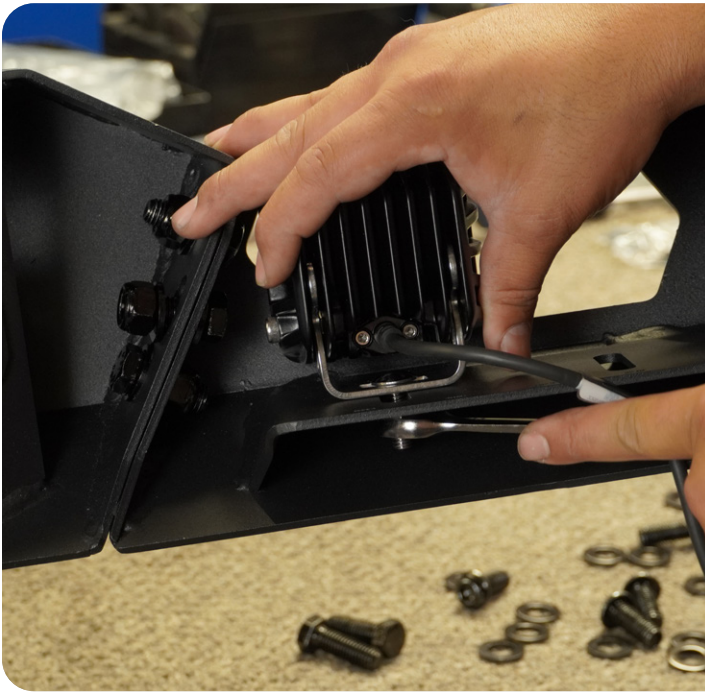


STEP 28 | ALIGN THE WING TO THE FACE/FRONT OF THE BUMPER, AND SECURE THE BOLTS.



STEP 29 | EACH WING CAN ACCEPT (2) 3" POD LIGHTS. USING THE HARDWARE PROVIDED WITH THE LIGHTS, INSTALL THEM NOW.

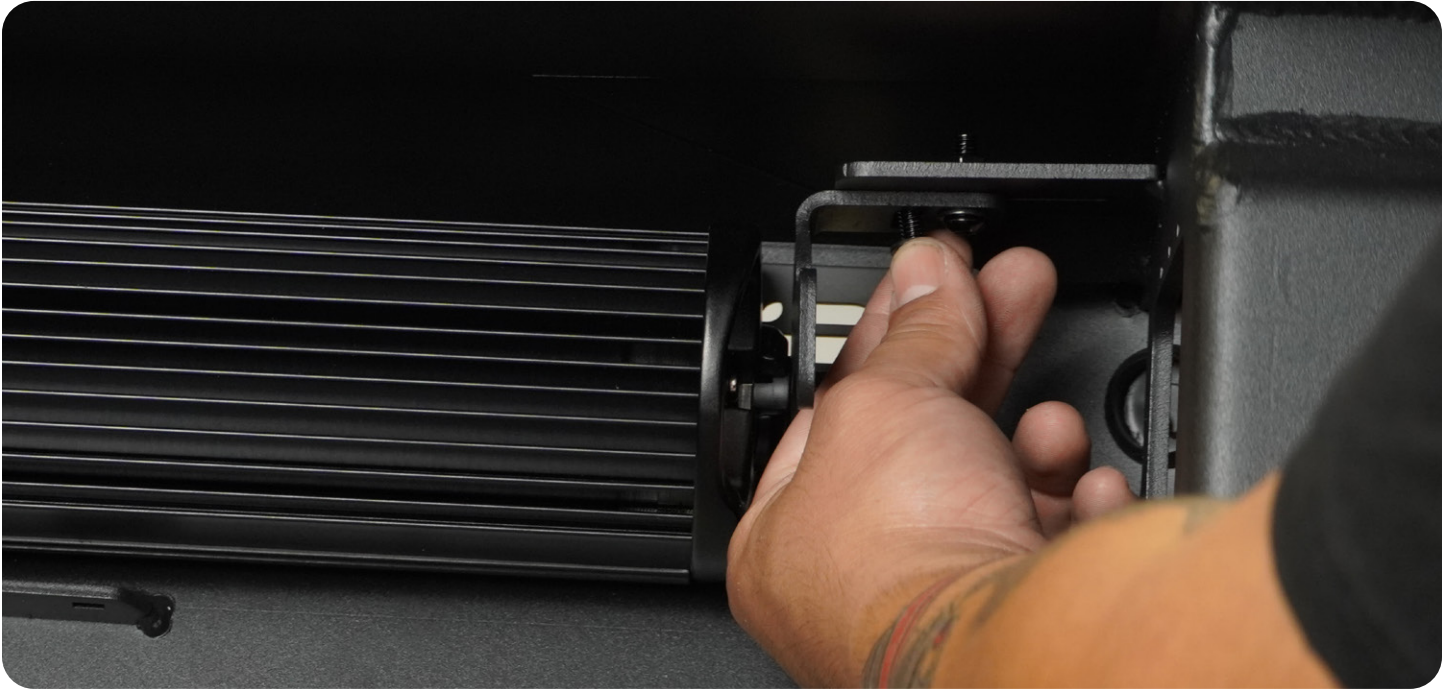




STEP 30 | THE CENTER LIGHT CAN ACCEPT (1) 20" LIGHT BAR. USING THE HARDWARE PROVIDED WITH THE LIGHT, MOUNT THE BRACKETS TO THE LIGHT AS SHOWN.



STEP 31 | USING A #4 ALLEN WRENCH AND 10MM WRENCH, INSTALL THE (4) M6X20 BOLTS, WASHERS, AND NUTS TO THE LIGHT BAR BRACKET.



STEP 32 | INSTALL THE M12 NUTCLIP TO THE BUMPER ON EACH SIDE.



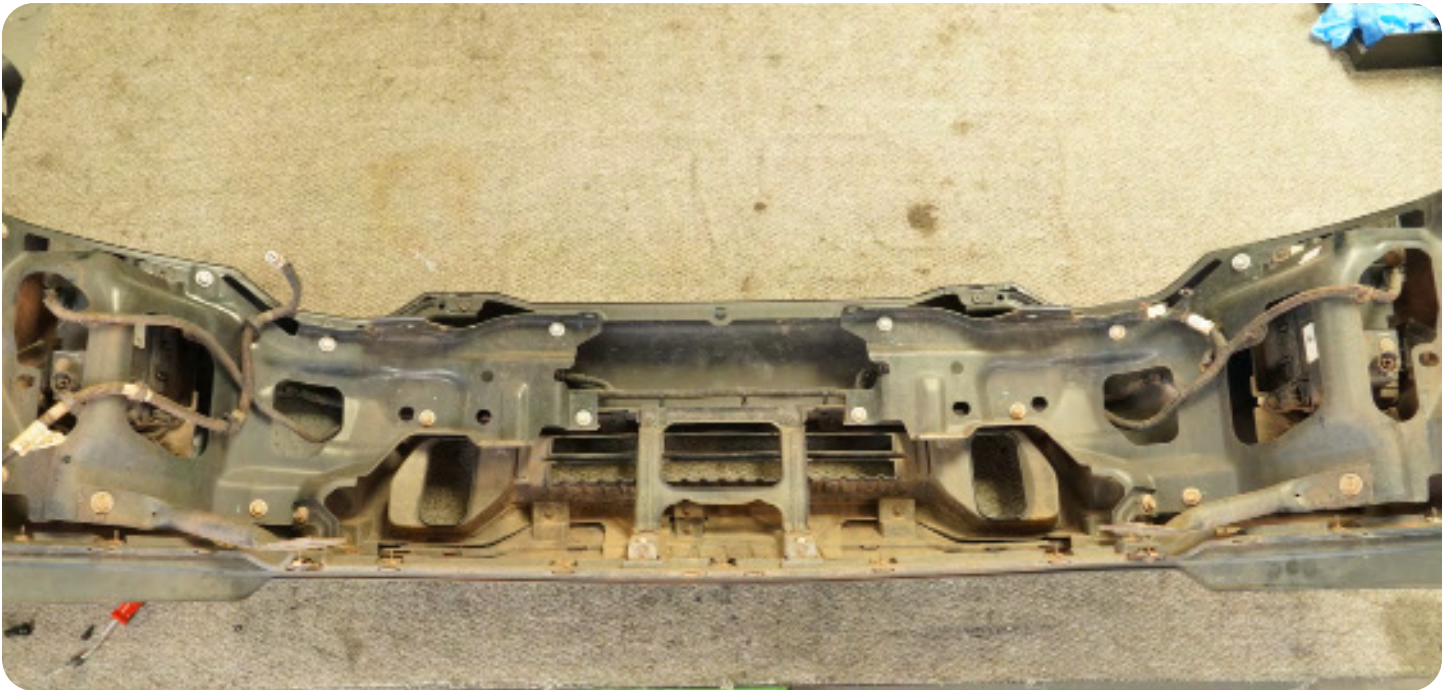
STEP 33 | IF INSTALLING A WINCH, INSTALL THE FAIRLEAD AT THIS MOMENT.

NOTE: WE ARE USING OUR DV8 FAIRLEAD (WBPF-01 OR WBPF-02)

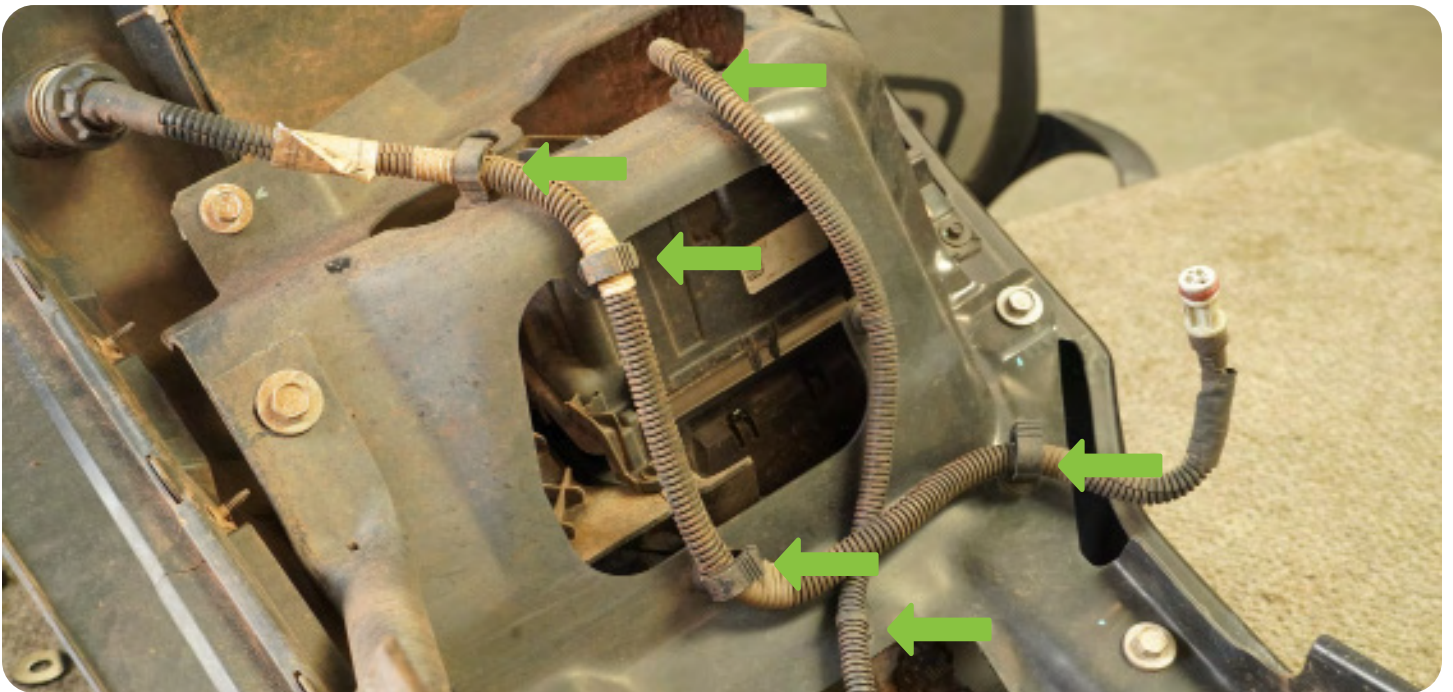
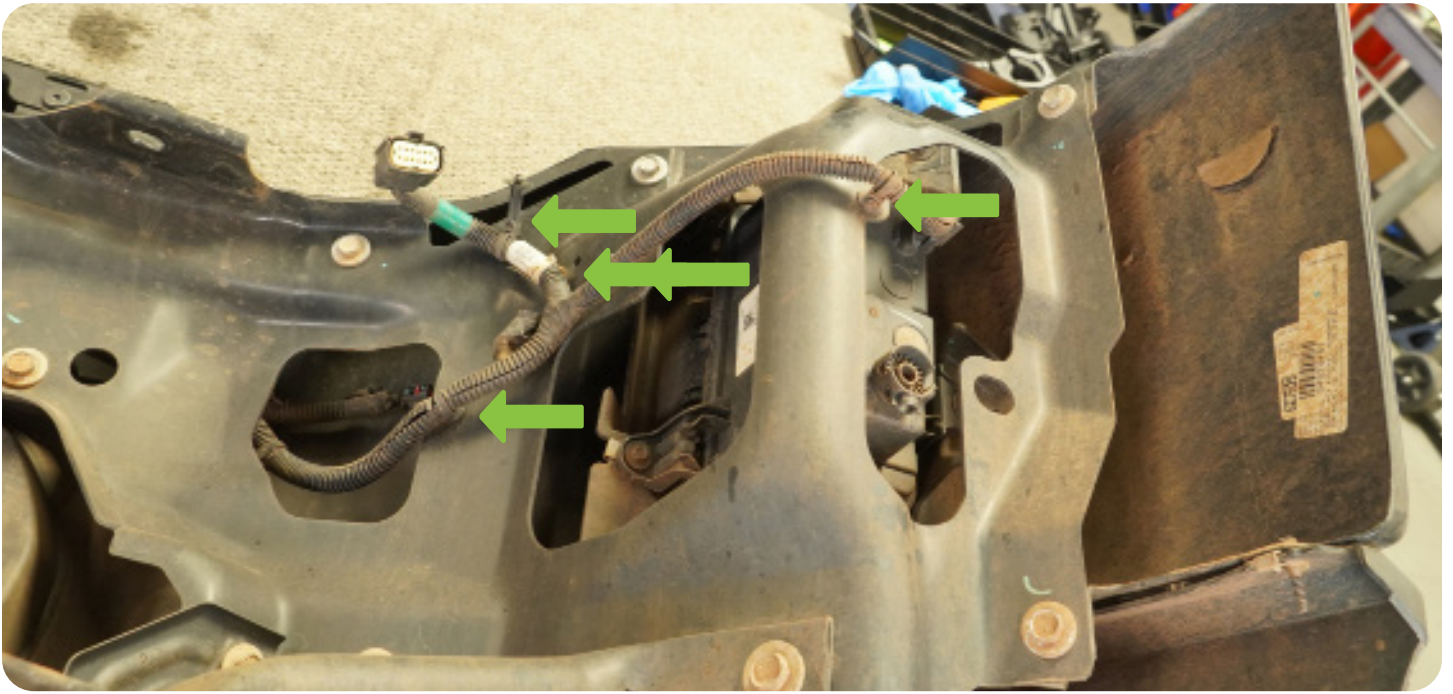




STEP 34 | PLACE FACTORY BUMPER ON A TABLE OR A PLACE IT WILL NOT GET DAMAGED AND START REMOVING THE HARNESS.



STEP 35 | REMOVE ALL THE HARNESS CLIPS OFF THE BUMPER.



STEP 36 | DISCONNECT THE PIGTAIL OFF THE FOG LIGHTS.

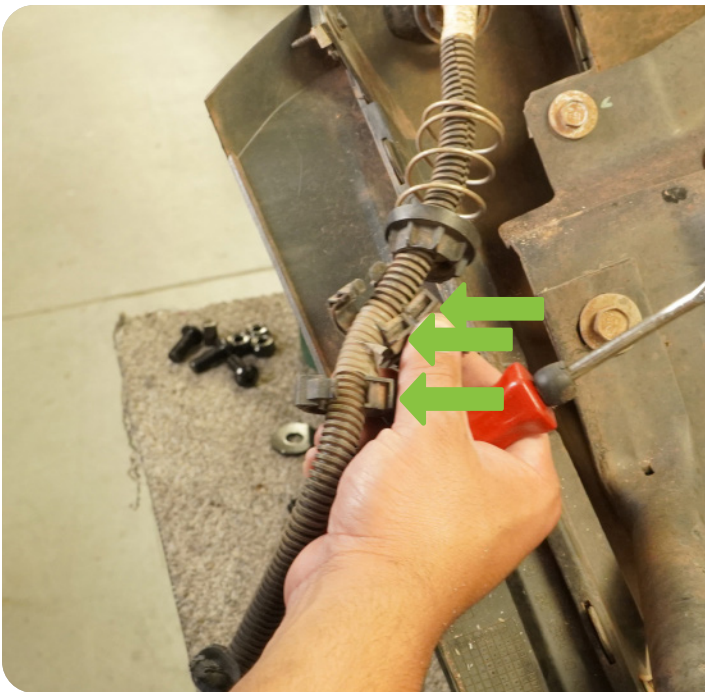


STEP 37 | IF EQUIPPED, REMOVE THE PARKING SENSORS FROM THEIR BEZELS.

NOTE: WHEN REMOVING THE SENSORS, MARK OR NOTE THEIR ORIENTATION TO ENSURE THEY ARE INSTALLED CORRECTLY ON THE NEW BUMPER AND TO AVOID ANY ISSUES DURING RE-INSTALLATION.



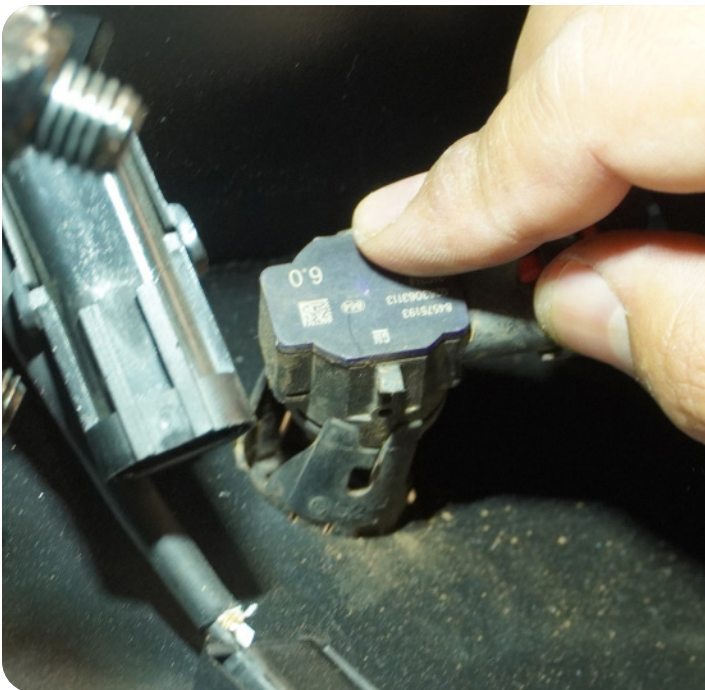
STEP 38 | REMOVE THE BLOCK HEATER HARNESS. TWIST AND TURN COUNTER CLOCKWISE. REMOVE THE CLIPS ON THE HARNESS TO REMOVE THE SPRING AND SPRING HOLDER TO REMOVE THE HARNESS THROUGH THE BUMPER.

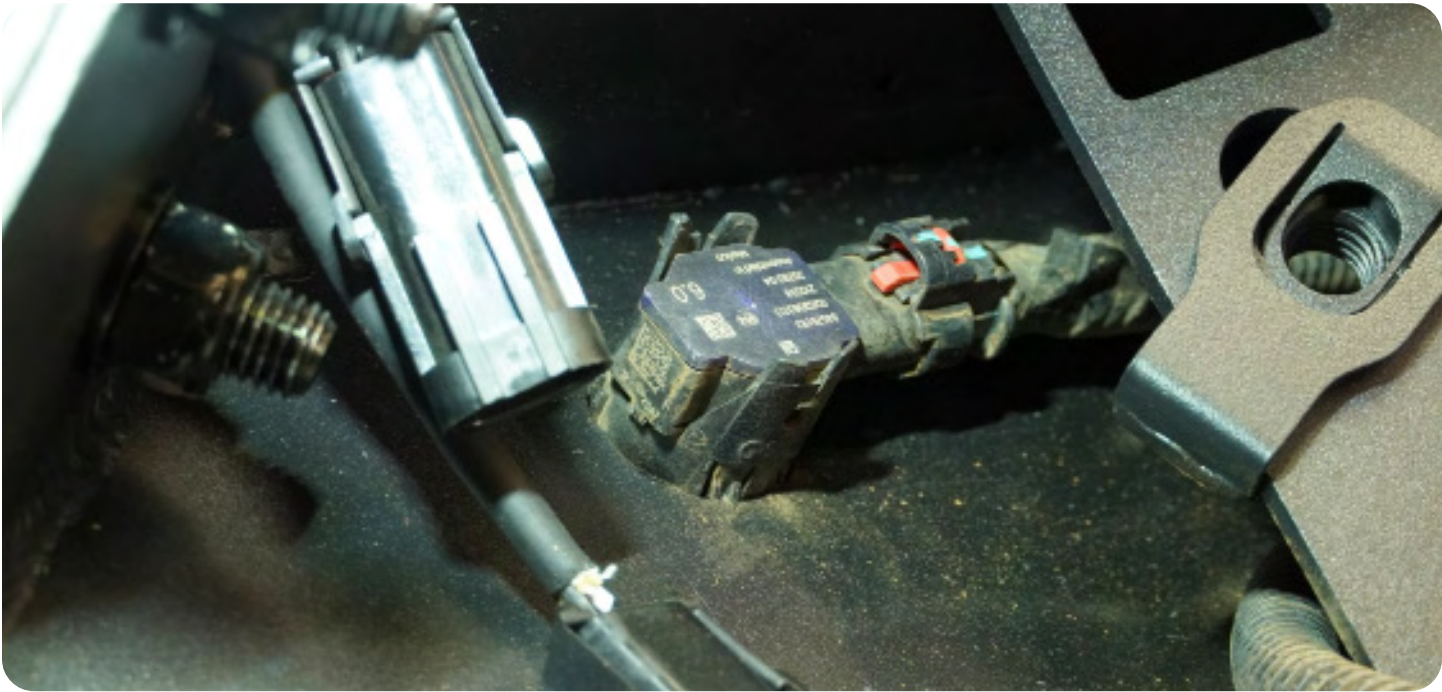


STEP 39 | ONCE HARNESS IS FULLY REMOVED FROM THE BUMPER, ROUTE HARNESS THROUGH ASSEMBLED BUMPER ROUGHLY ALIGNING SENSORS (IF EQUIPPED) WITH THEIR RESPECTIVE HOLES.



STEP 40 | INSTALL THE PARKING SENSOR AND THE BEZEL AT THE SAME TIME. WITH THE BEZEL STILL OUT AND THE SENSOR ON THE BEZEL, SQUEEZE THEM TOGETHER AND FLUSH TO THE BUMPER. THERE WILL BE A CLICK OR IT WILL SIT CORRECTLY ON THE BUMPER.



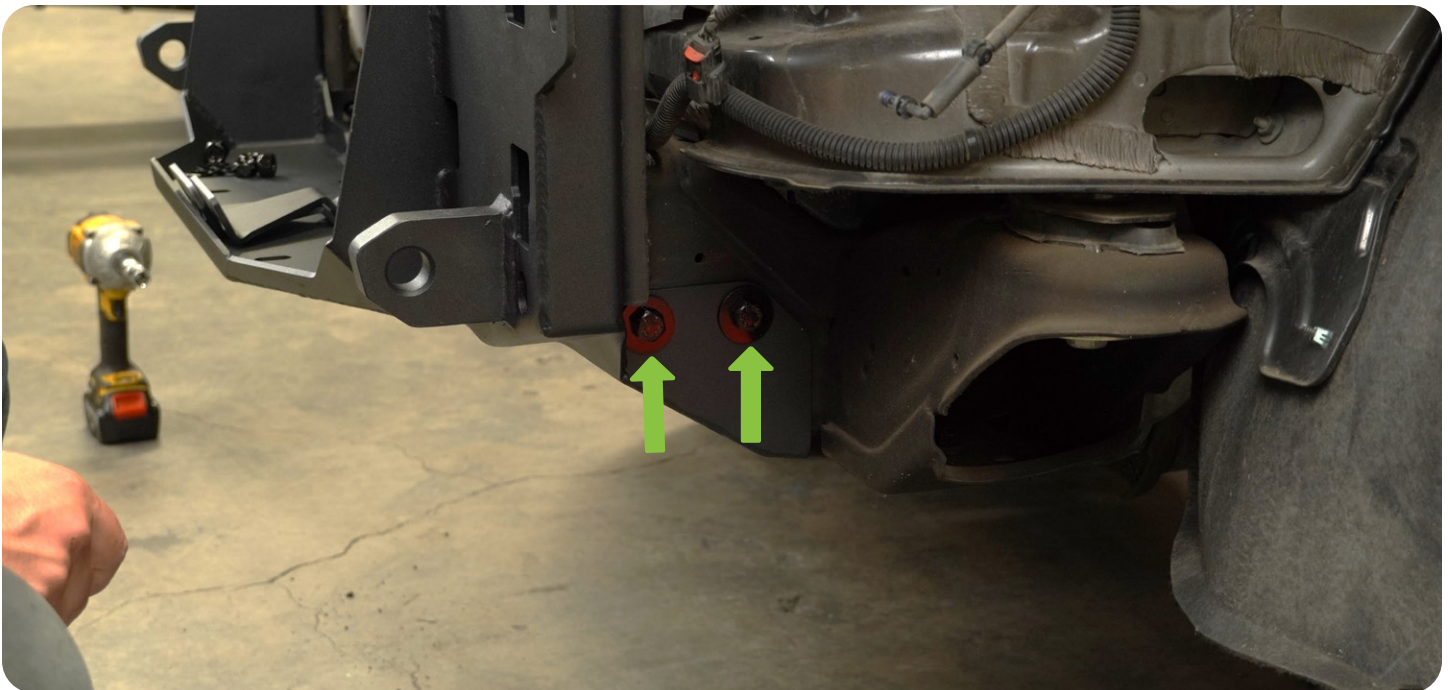


STEP 41 | ENSURE THE SENSOR IS PROPERLY SEATED AND THE SENSOR RING IS NOT PINCHED.

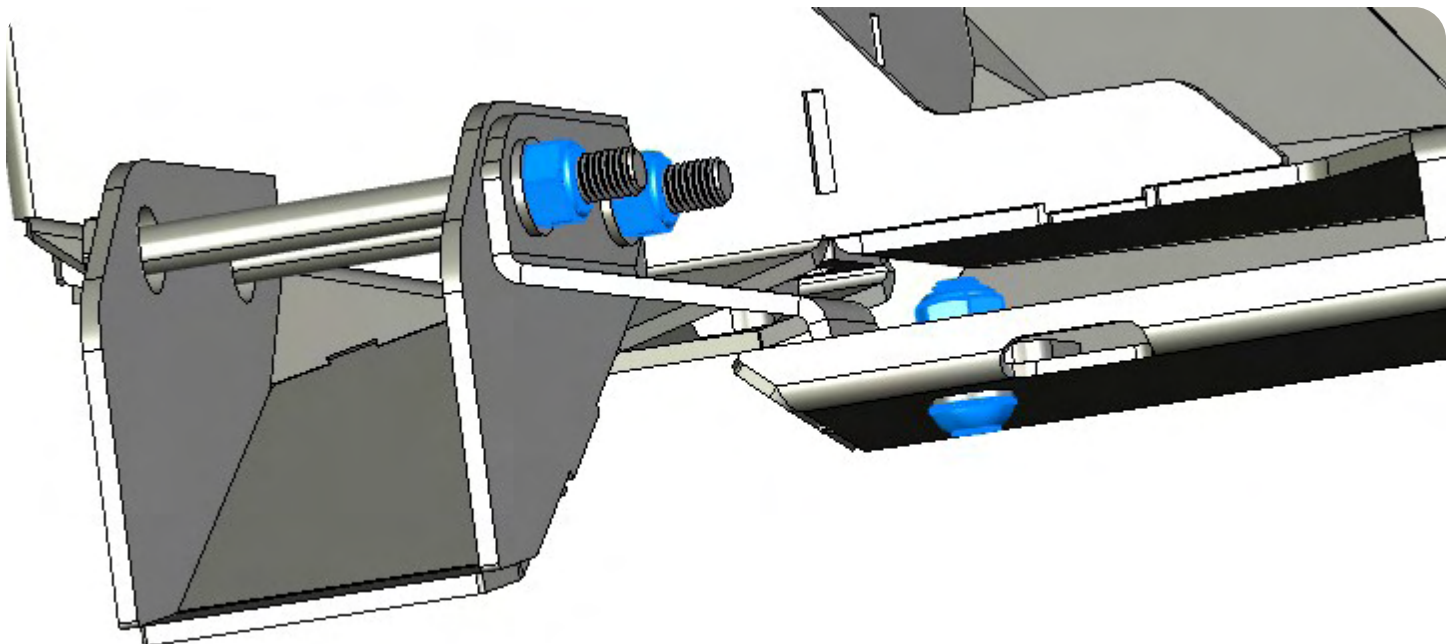
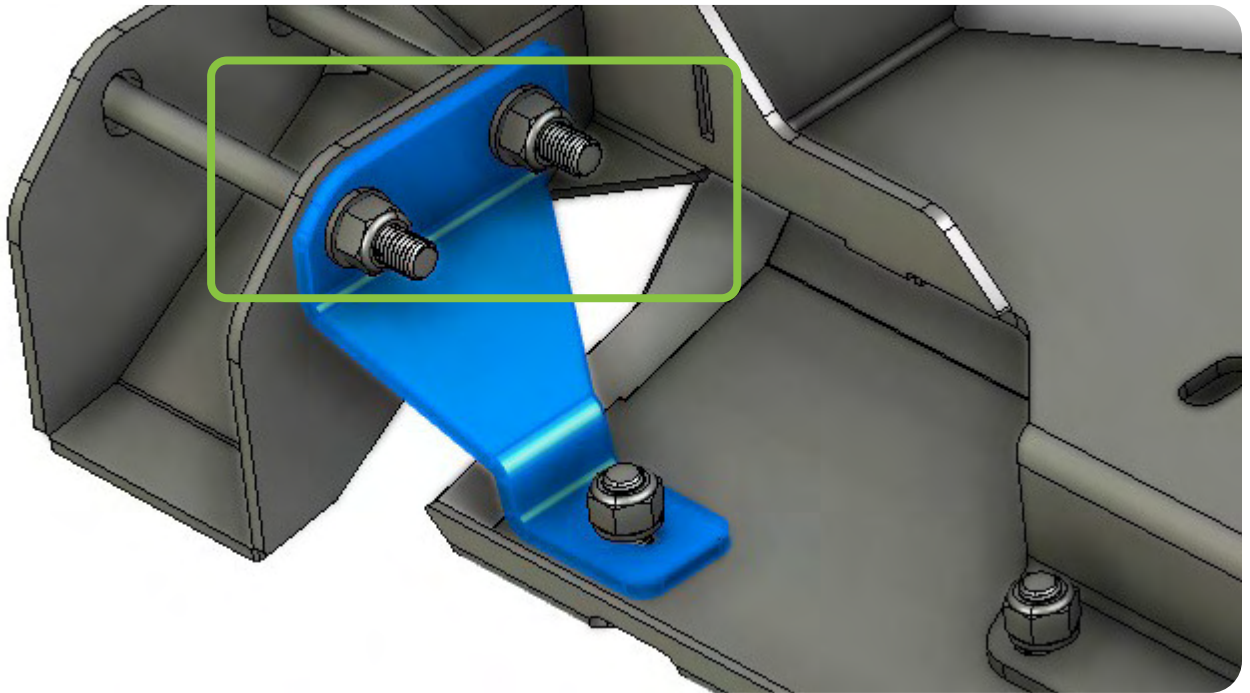
NOTE: IT IS VITAL THAT THE SENSORS ARE PROPERLY INSTALLED TO ENSURE PROPER FUNCTION. ONCE THE BUMPER IS MOUNTED, ACCESS TO THE SENSORS IS LIMITED.



STEP 42 | INSERT THE (2) M12X140 BOLT AND WASHER ON BOTH SIDES OF THE BUMPER.



STEP 43 | PLACE THE BRACKET SUPPORT BEHIND THOSE (2) BOLTS



STEP 44 | IF INSTALLING A WINCH, INSTALL WINCH ON THE BUMPER BRACKET.



STEP 45 | USE THE PROVIDED HARDWARE THAT COMES WITH THE WINCH TO SECURE YOUR WINCH TO THE MOUNTING PLATE.



STEP 46 | PLACE THE BUMPER ON THE BUMPER BRACKET, LOOSELY INSTALL THE (2) M12X30 ALLEN BOLTS AND WASHERS DIRECTLY LEFT AND RIGHT OF THE D-RING MOUNT.

NOTE: WE RECOMMEND A SECOND PAIR OF HANDS INSTALLING BUMPER TO PREVENT INJURY OR DAMAGE TO VEHICLE.



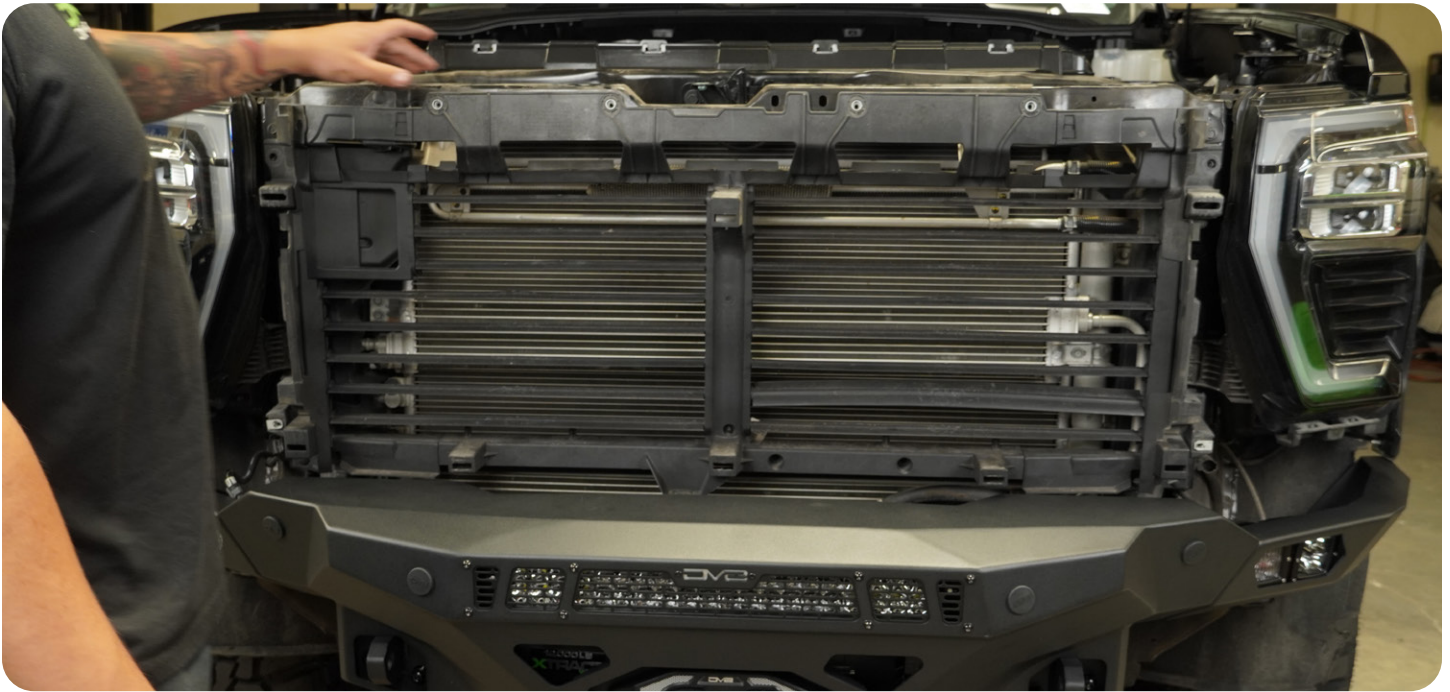
STEP 47 | LOOSELY INSTALL THE (2) M12X35 BOLT AND WASHERS ON THE BACK OF THE UPPER PART OF THE BUMPER.



STEP 48 | INSTALL (4) M12X30 BOLT, OVERSIZE WASHER, AND NUT TO THE SKID PLATE WINCH PLATE. SECURE YOUR BOLTS USING A #8 ALLEN SOCKET.



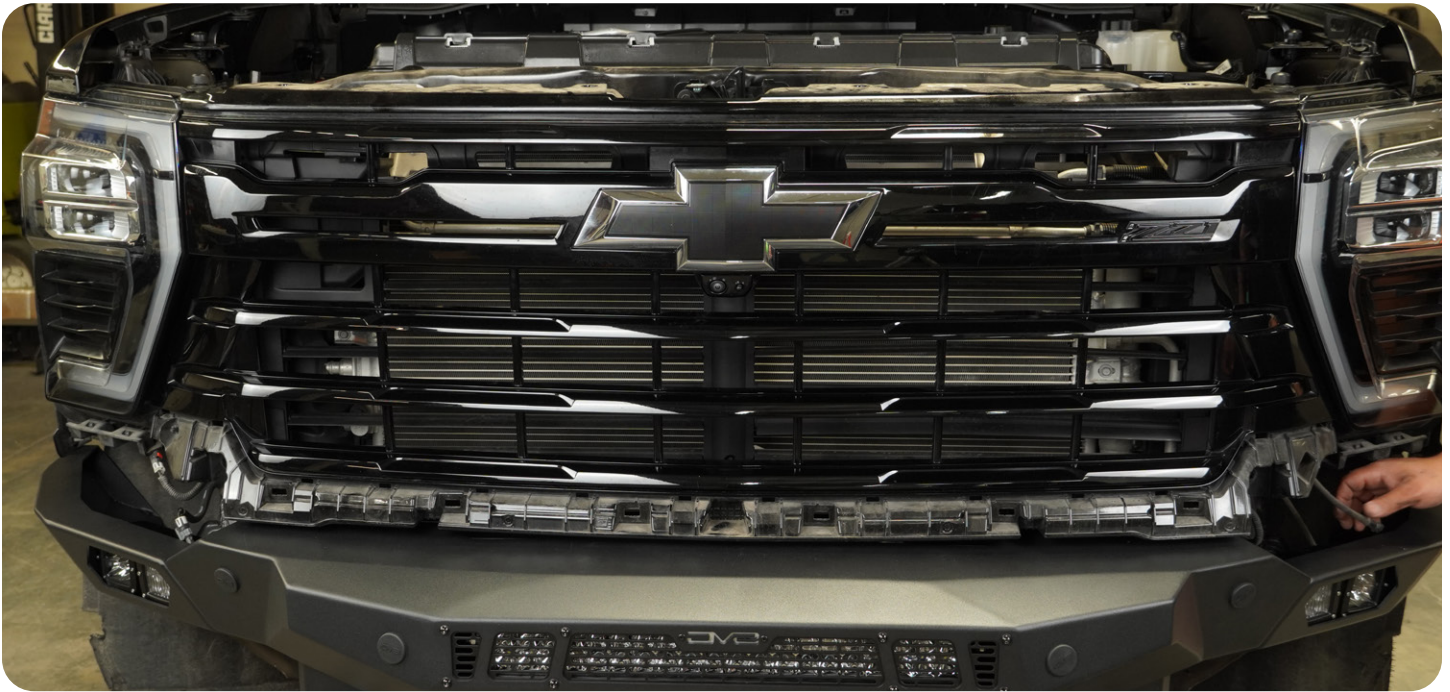
STEP 49 | RE-INSTALL RADIATOR SHUTTER ASSEMBLY.



STEP 50 | RECONNECT YOUR SHUTTER, ENGINE BLOCK HEATER CONNECTORS AND VACUUM HOSE ON THE DRIVER SIDE.



STEP 51 | CAREFULLY RE-INSTALL THE FRONT GRILLE.



STEP 52 | RE-INSTALL THE PARKING SENSOR AND FRONT CAMERA CONNECTORS ON THE PASSENGER SIDE.



STEP 53 | SECURE THE GRILLE WITH THE (4) FACTORY BOLTS.



STEP 54 | CAREFULLY RE-INSTALL THE BODY PANEL.

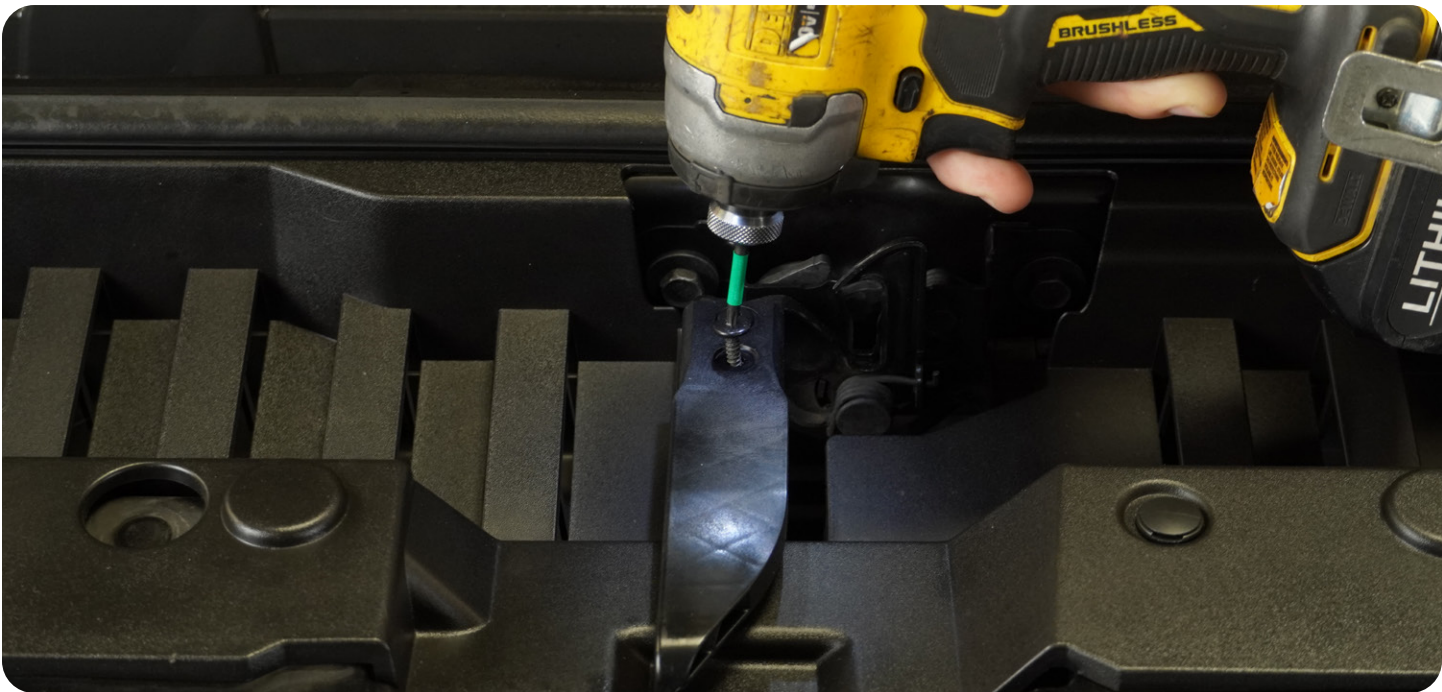




STEP 55 | CHECK THE ALIGNMENT OF THE BUMPER TO THE VEHICLE WHILE SECURING YOUR BUMPER BOLTS.



STEP 56 | RE-INSTALL YOUR RADIATOR SHROUD. RE-INSTALL THE HOOD LATCH HANDLE.



STEP 57 | RE-INSTALL YOUR 7MM BOLT AND CAREFULLY CLIP BACK ON THE PLASTIC FENDER.



STEP 58 | CUT THE EXCESS FENDER LINER MATERIAL, FOR A CLEANER LOOK.



STEP 59 | CUT THE LINER USING A CUTTING TOOL (BOX KNIFE, SCISSORS, ETC.) EXPOSING (2) 10MM BOLTS. REMOVE THOSE BOLTS USING A 10MM SOCKET AND REMOVE THE BRACKET.



CONGRATULATIONS

YOU ARE FINISHED WITH THE INSTALL OF THE 2024+ Chevy 2500/3500 FRONT SPEC SERIES BUMPER.

+ SHARE YOUR PICS

WE LOVE SEEING HOW OUR CUSTOMERS USE THEIR DV8 OFFROAD PRODUCTS AND FOLLOWING ALONG WITH YOUR ADVENTURES. TAG US IN YOUR PHOTOS @DV8OFFROAD. WE ENJOY SHARING CUSTOMER PHOTOS ON OUR FEED.



+ WRITE A REVIEW

ARE YOU HAPPY WITH YOUR NEW DV8 OFFROAD PRODUCT? WE WOULD LOVE TO HEAR AND SEE YOUR EXPERIENCE. VISIT THE PRODUCT PAGE AND CLICK "WRITE A REVIEW". ADD A SHORT REVIEW AND UPLOAD A FEW PHOTOS TO BE FEATURED ON THE PRODUCT PAGE.

WWW.DV8OFFROAD.COM

+ NEED HELP?

IF YOU ARE HAVING ANY ISSUES WITH YOUR PRODUCT, PLEASE REACH OUT. DV8 OFFROAD IS A COMPANY OF OFF ROAD ENTHUSIASTS THAT DESIGN AND USE OUR OWN PRODUCTS, SO WE WANT YOU TO BE JUST AS STOKED ON YOUR NEW PARTS AS WE ARE.

P. 855.680.9595

E. SALES@DV8OFFROAD.COM

