

FORD F250/350 SPEC SERIES BUMPER

2017-2022 FORD F250/350

FBFF2-07



TOOLS REQUIRED

- + 10mm, 13mm, 15mm, 17mm, 18mm, 19mm, 21mm, 24mm, 5/16" sockets
- + #4, #6, #8 Allen tool/sockets
- + 15/16", 10mm, 19mm, 21mm, 22mm wrenches
- + 6" Socket Extension
- + Pry Trim Tool
- + Safety Glasses
- + Flat file
- + Flush clippers

SKILL LEVEL

- + Novice/Intermediate
- + 1 (you) to 2 persons

Little skill level required, you can easily install it by yourself however, additional help will be useful to prevent injury or damage.

TIME REQUIRED

- + Approximately 4.5 Hours

WARNINGS/CAUTIONS BEFORE STARTING INSTALLATION

Before you install this kit – Read and understand all instructions, warnings, cautions, and notes contained in this installation instruction guide. Consult your vehicle owner's manual for proper disconnection of electrical and lifting of vehicle if required for installation of this product.

This install may require some technical skills and knowledge of basic mechanical work. If you do not feel that you are capable of performing this install please take this product to a trained professional.

After reading this guide please contact us with any questions or concerns before installing product.
Customer Service: 855-680-9595

DV8 Offroad is not responsible for any bodily injury or harm to you or your vehicle as a result of an improper install.

Proper installation of this kit required knowledge of the factory recommended procedures for removal and installation of original equipment components. We recommend that the factory shop manual and any special tools needed to service your vehicle be on hand during the installation. Installation of this kit without proper knowledge of the factory recommended procedures may affect the performance of these components and the safety of the vehicle

- *Always wear eye protection when operating power tools*

Inspect all contents of this package to make sure product is not damaged and all installation hardware has been included. If parts are missing from kit, please be prepared to provide the following information

1. Name of purchase location
2. Bar Code on side of box
3. Date above bar code
4. Date inside box cover

HARDWARE INCLUDED

Begin by unpacking all items and inspecting for missing pieces or damage. If you have any concerns, please contact the company the product was purchased from. Extra hardware may be included with the product.



(4) M6x20 Allen Bolts



(8) M6x20 Hex Bolts



(4) M6 Nylock Nuts



(16) M6 Flat Washer



(2) M8x20 Hex Bolts



(2) M8 Nylock Nuts



(4) M8 Flat Washer



(2) M10x30 Hex Bolts



(4) M10x25 Countersunk Bolts



(6) M10 Nylock Nuts



(8) M10 Flat Washer



(14) M12 Nylock Nuts



(2) M12 Oversize Washer



(28) M12 Flat Washer



(4) M12x30 Hex Bolts

HARDWARE INCLUDED

Begin by unpacking all items and inspecting for missing pieces or damage. If you have any concerns, please contact the company the product was purchased from. Extra hardware may be included with the product.



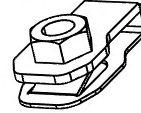
(6) M12x30 Allen Bolts



(4) M12x35 Allen Bolts



(2) M12x40 Hex Bolts



(2) M12



(4) M14x55 Hex Bolts



(4) M14 Nylock Nuts



(8) M14 Flat Washers



(4) M16x170x40 Hex Bolts



(4) M16 Nylock Nuts



(2) M16 Flat Washers



(6) 38x38x5 Square spacers

PARTS INCLUDED



STEP 1 | BEGIN BY USING THE PRY/TRIM TOOL TO REMOVE THE FRONT PLASTIC TRIM ON THE BUMPER.

NOTE: DEPENDING ON THE MODEL, THESE WILL COME OUT AS SINGLE LONG PIECE OR MULTIPLE PIECES.



STEP 2 | ONCE THE TRIMS ARE REMOVED, IF EQUIPPED, CAREFULLY REMOVE THE ADAPTIVE CRUISE CONTROL (ACC) MODULE USING A PRY TOOL.

NOTE: CERTAIN MODELS WILL HAVE 10MM NUTS HOLDING ACC IN PLACE. YOU WILL NEED PART #ABFF-02 TO RELOCATE THE ACC MODULE.

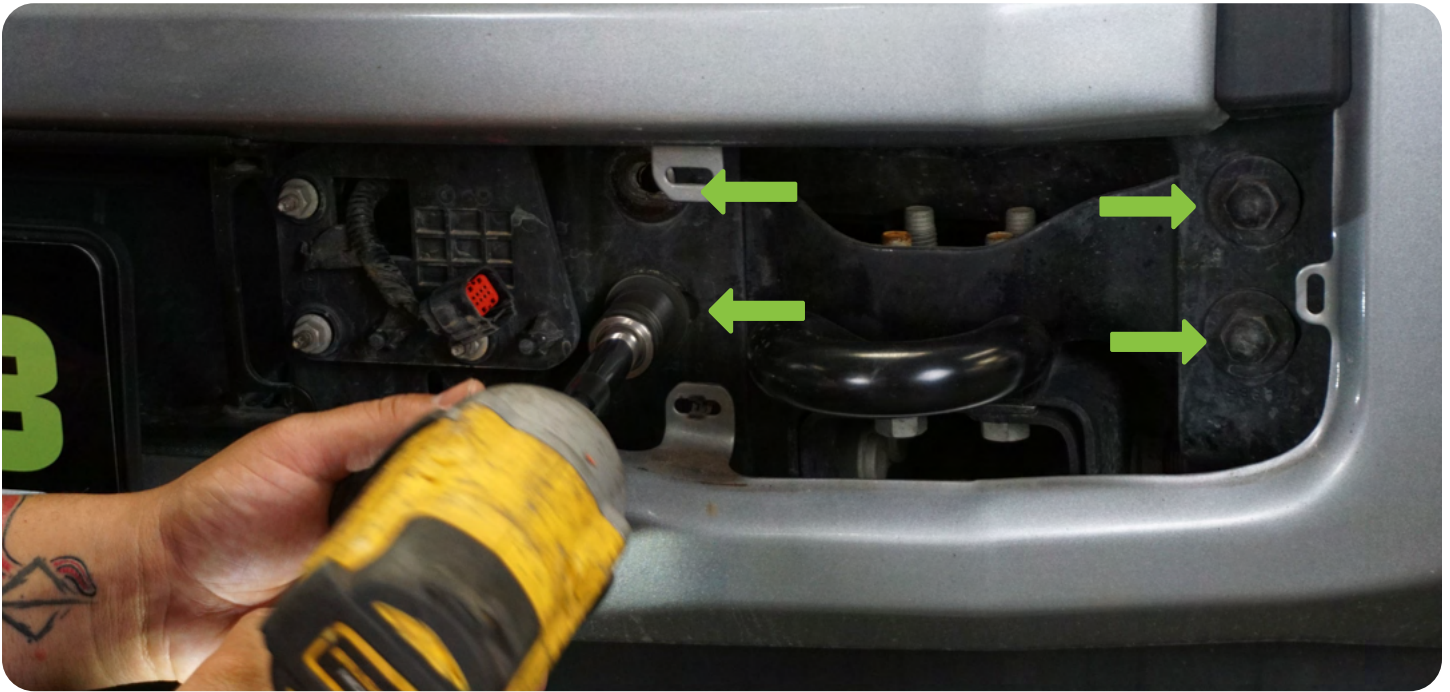


STEP 3 | UNPLUG THE ACC FROM THE VEHICLE.



STEP 4 | REMOVE THE (4) NUTS PER SIDE USING AN 18MM SOCKET.

NOTE: WHEN REMOVING THE NUTS, A COUPLE OF BRACKETS CAN COME OFF. YOU WILL NOT NEED THE BRACKET TO INSTALL BUMPER.



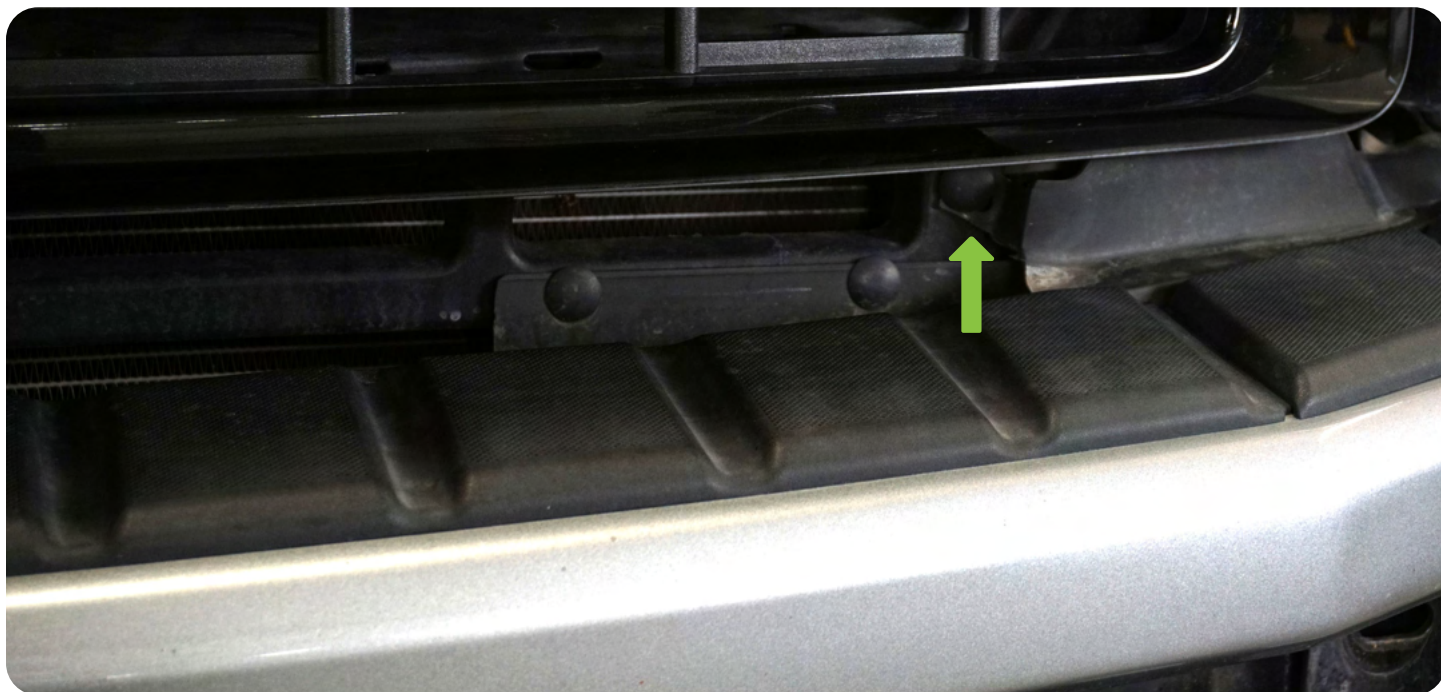
STEP 5 | UNPLUG THE HARNESS FROM THE DRIVER SIDE ON THE BACK SIDE OF THE BUMPER.



STEP 6 | USING A 15MM SOCKET, REMOVE THE (2) BUMPER SUPPORT NUTS ON BOTH SIDES.



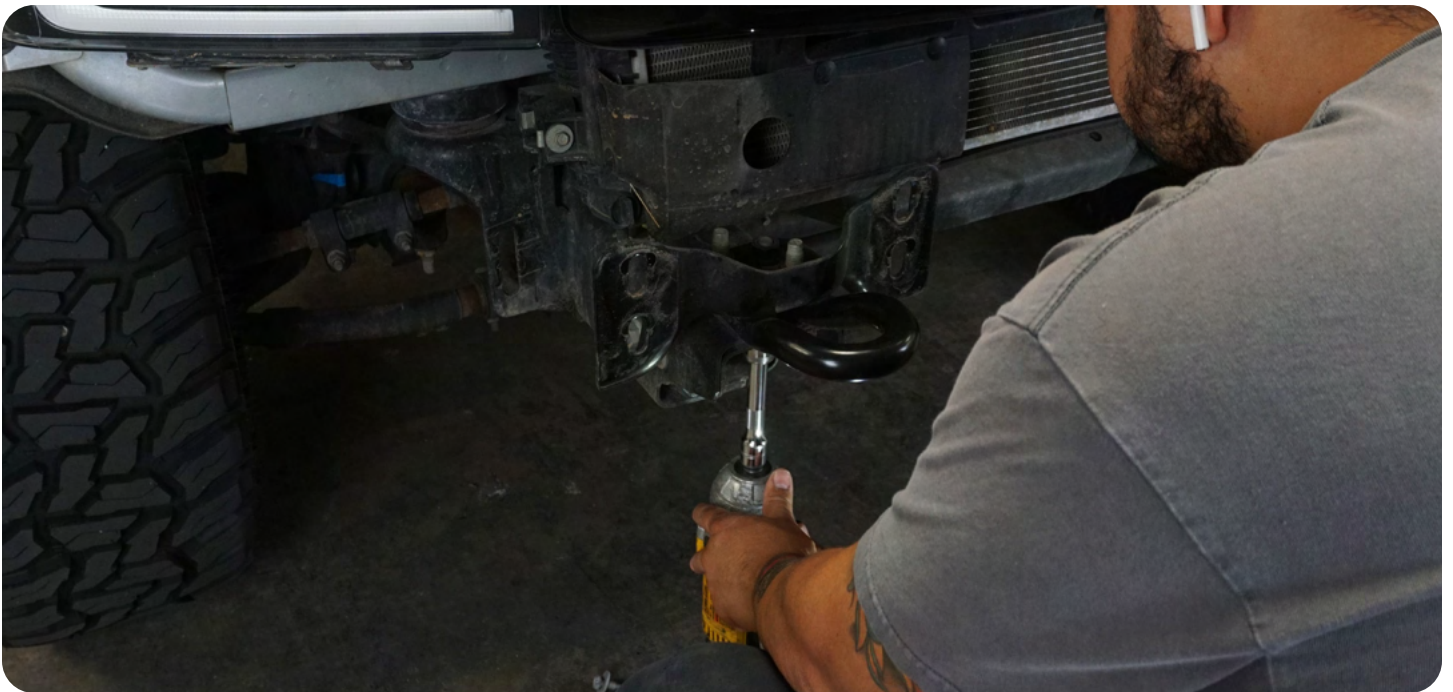
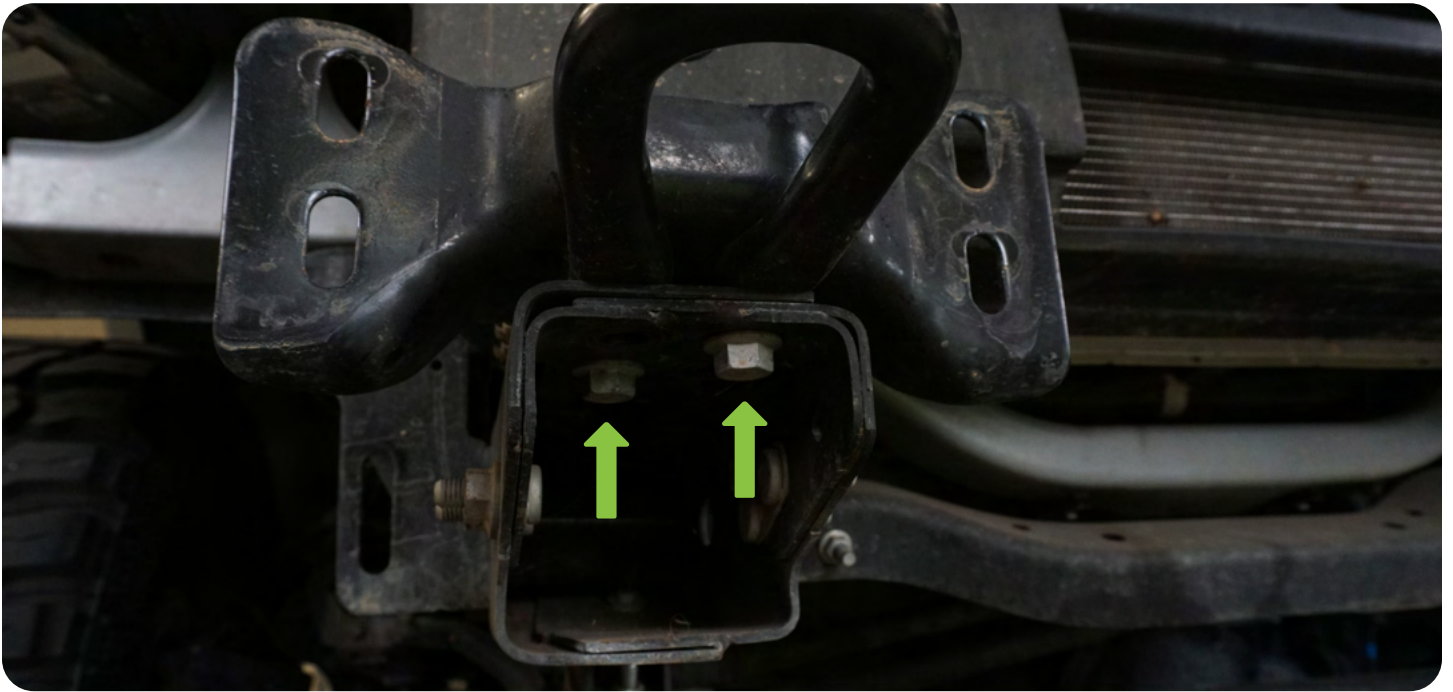
STEP 7 | BEFORE PULLING THE BUMPER AWAY FROM THE VEHICLE. DETACH THE (2) CLIPS BETWEEN THE BUMPER AND THE GRILLE USING A PRY TOOL.



STEP 8 | CAREFULLY REMOVE BUMPER AND SET OF TO THE SIDE.



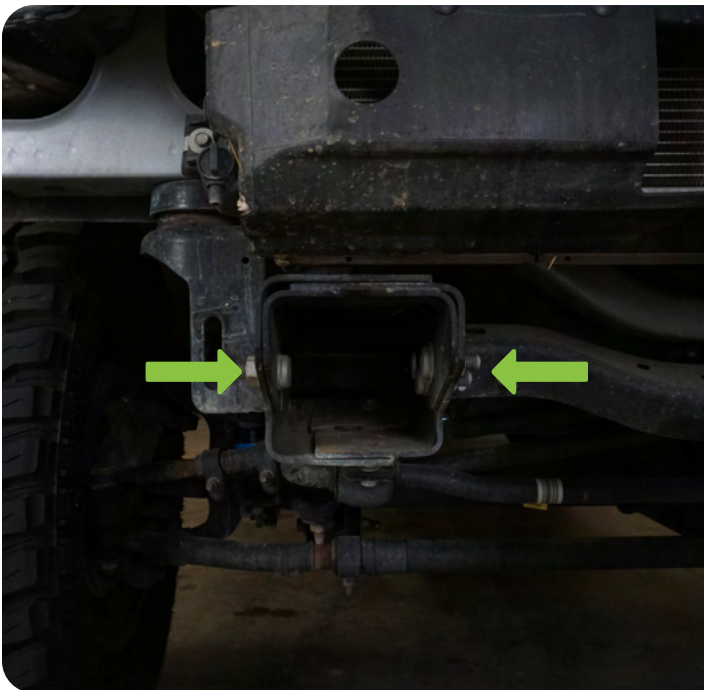
STEP 9 | USING AN 18MM SOCKET, REMOVE THE (4) BOLTS PER SIDE HOLDING TO THE TOW HOOKS.



STEP 10 | REMOVE TOW HOOKS.



STEP 11 | USING AN 18MM SOCKET, REMOVE THE (4) SIDE BOLTS IN THE FRAME HORNS FOR THE CRASH BARS.





STEP 12 | INSTALL THE WINCH MOUNT TO THE BUMPER BRACKET, INSTALL THE (4) M10X25 COUNTERSUNK BOLT, WASHER, AND NYLOCK NUT. USING A #6 ALLEN SOCKET AND A 17MM WRENCH, SECURE YOUR BOLTS.







STEP 13 | AFTER INSTALLING THE COUNTERSUNK BOLTS. LOOSELY INSTALL THE WINCH PLATE BRACKET USING (2) M12X30 BOLT, WASHER, AND NYLOCK NUTS.



STEP 14 | ONCE BOTH SIDES ARE INSTALLED, INSTALL THE BRACKETS TO THE FRAME HORN.

NOTE: AN EXTRA SET OF HANDS IS RECOMMENDED IN THIS PROCESS AS THE BRACKET WILL FIT SNUG TO THE FRAME HORN. A USE OF A RUBBER MALLET IS RECOMMENDED TO TAP IT ON TO THE FRAME HORN. IF IT IS TOO TIGHT, REMOVE ASSEMBLY, READJUST THE FRAME BRACKETS SLIGHTLY AND RETRY.





STEP 15 | TO ASSEMBLE BUMPER, START WITH ATTACHING THE (2) FOAM PADS PROVIDED TO THE END OF THE BUMPER WHERE THE WINGS WILL BE ATTACHED TO.



STEP 16 | LOOSELY INSTALL (3) M12X30 HEX BOLTS, FLAT WASHERS, AND NYLOCK NUTS USING A 17MM AND 18MM SOCKET OR WRENCH ON EACH SIDE.



STEP 17 | ALIGN THE FACE OF THE WINGS TO THE FACE OF THE BUMPER. ONCE ALIGNMENT IS SET, SECURE THE BOLTS IN PLACE. REPEAT THE PROCESS TO THE OTHER SIDE.

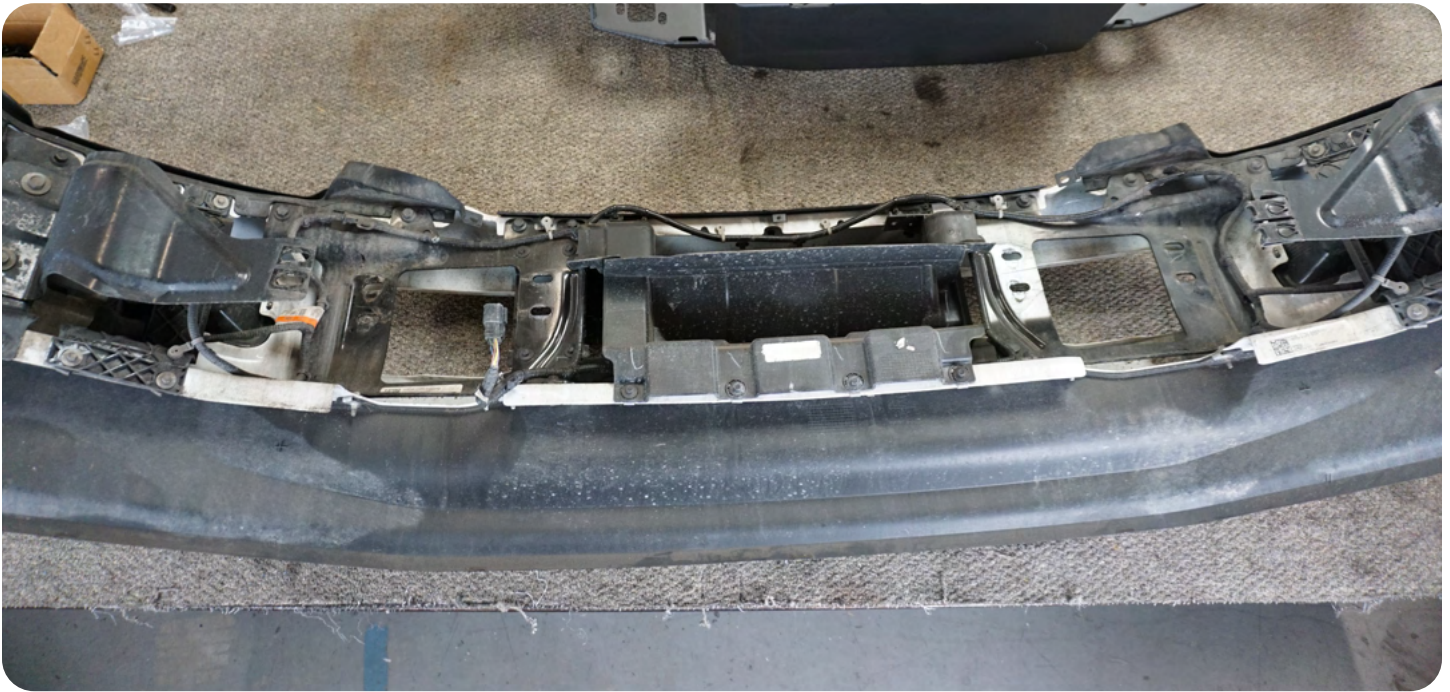




STEP 18 | INSTALL THE (2) PROVIDED M12 NUTCLIPS TO THE BUMPER.



STEP 19 | ONCE BUMPER IS FULLY ASSEMBLED, SET ASIDE. REMOVE THE WIRING HARNESS FROM FACTORY BUMPER.



STEP 20 | USING A TRIM TOOL, REMOVE THE CLIPS HOLDING THE HARNESS TO THE BUMPER.



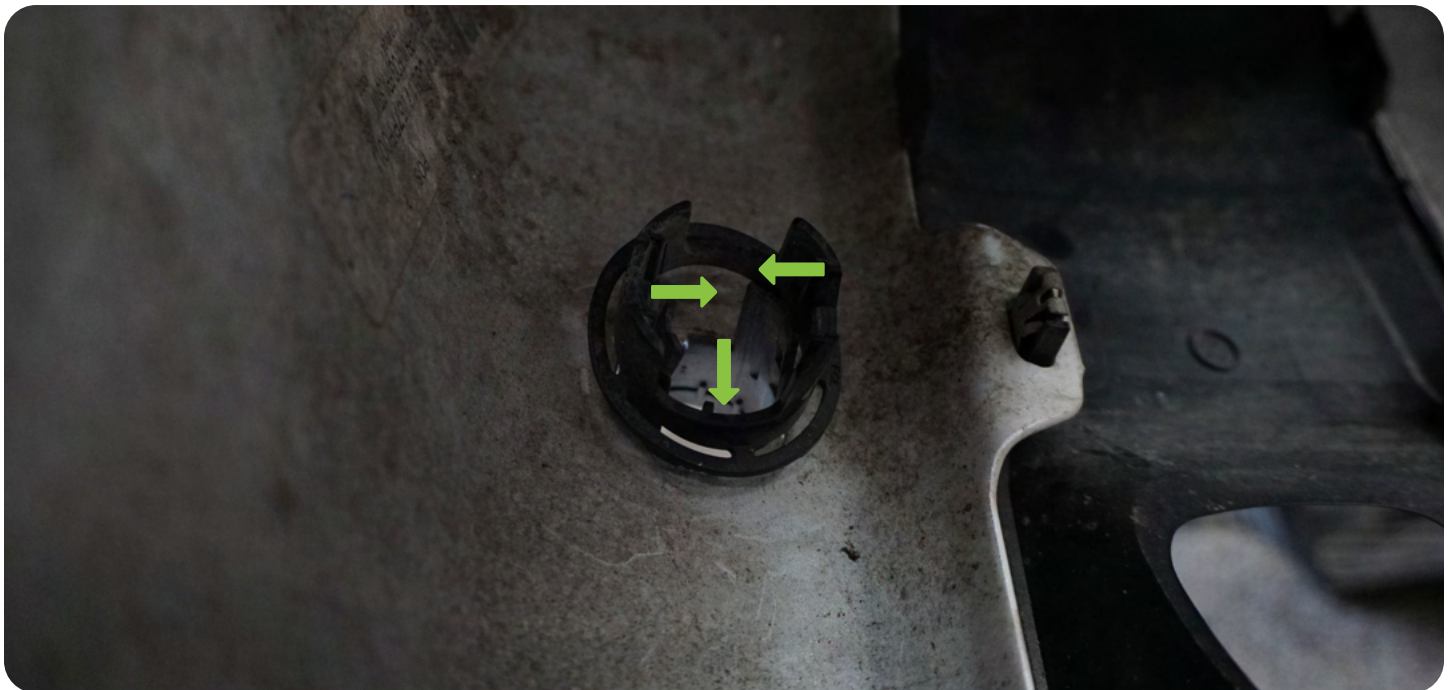
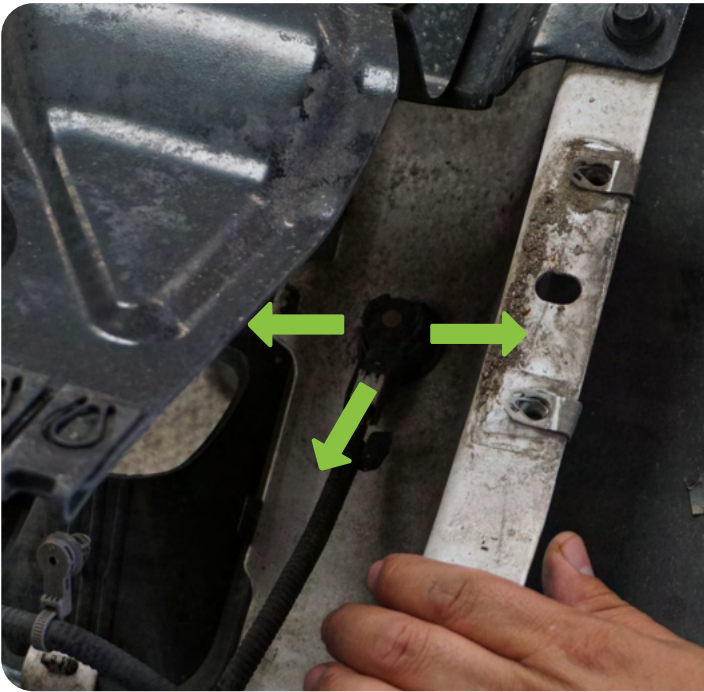
STEP 21 | DISCONNECT THE PIGTAIL FROM THE FOG LIGHTS.



STEP 22 | USING THE 5/16" SOCKET, REMOVE THE (4) BOLTS HOLDING THE FOG LIGHT BRACKET.



STEP 23 | IF EQUIPPED, REMOVE THE PARKING SENSORS. CAREFULLY PULL THE TABS TO THE SIDE TO REMOVE SENSOR. PUSH THE SAME TABS AND PUSH OUT TO REMOVE IT FROM THE BUMPER AND BRACKET THAT IS HOLDING IT IN PLACE.





STEP 24 | ONCE ALL THE CLIPS OFF THE HARNESS ARE REMOVED AND ALL SENSORS (IF EQUIPPED), REMOVE THE HARNESS FROM THE BUMPER AND SET ASIDE.



STEP 25 | TO INSTALL THE SENSOR BEZELS TO THE BUMPER, YOU WOULD NEED TO TRIM THE EDGES OF THE BEZELS AND THE BRACKETS THAT ARE CONNECTED ON THE OTHER SIDE OF THE BUMPER. THE BEZELS WOULD NEED TO BE SITTING FLUSH TO THE BUMPER.



STEP 26 | INSTALL THE BEZELS WITH THE BRACKET IN THE SAME ORIENTATION THAT CAME OFF THE FACTORY BUMPER.

NOTE: IF THE SENSORS DON'T FIT PROPERLY, WE DO RECOMMEND OUR BEZELS PART# MCFNSR-01. IF INSTALLING OUR BEZELS, THE RUBBER PIECE AROUND THE SENSOR MUST BE REMOVED.



STEP 27 | RUN THE HARNESS THROUGH THE BUMPER, SETTING EACH SENSOR TO ITS POSITION.



STEP 28 | IF INSTALLING LIGHTS, ADD THEM NOW. EACH WING CAN HAVE (2) 3" POD LIGHTS. INSTALL THEM USING HARDWARE PROVIDED BY THE POD LIGHTS.



STEP 29 | IF INSTALLING A CENTER BAR LIGHT, THE BUMPER CAN (1) 20" BAR LIGHT. USING THE PROVIDED M6 HARDWARE, INSTALL THE BRACKETS TO THE BAR LIGHT.



STEP 30 | USING THE (2) M6X20 ALLEN BOLTS, WASHER, AND NYLOCK NUTS PER SIDE, INSTALL THE BAR LIGHT TO THE BUMPER.



STEP 31 | ONCE THE LIGHTS ARE INSTALLED, ZIP TIE THE HARNESS OUT OF THE WAY USING THE PROVIDED ZIP TIE TABS.



STEP 32 | IF INSTALLING A WINCH, INSTALL THE FAIRLEAD TO THE BUMPER NOW USING THE HARDWARE PROVIDED WITH THE FAIRLEAD.

NOTE: WE ARE USING DV8 FAIRLEAD. (PART# WBPf-01 OR WBPf-02)



STEP 33 | INSTALL THE M16X170 BOLTS AS SHOWN, WITH THE SQUARE SPACERS THROUGH THE WINCH PLATE AND FRAME. LEAVE THE FRONT BOLTS OUT (THE BOLT IN HIS HAND).



STEP 34 | INSTALL THE TOP (2) M14X55 HEX BOLT, WASHERS, AND NYLOCK NUTS. SECURE THE BOLTS USING A 21MM SOCKET WITH EXTENSION, AND 22MM WRENCH.

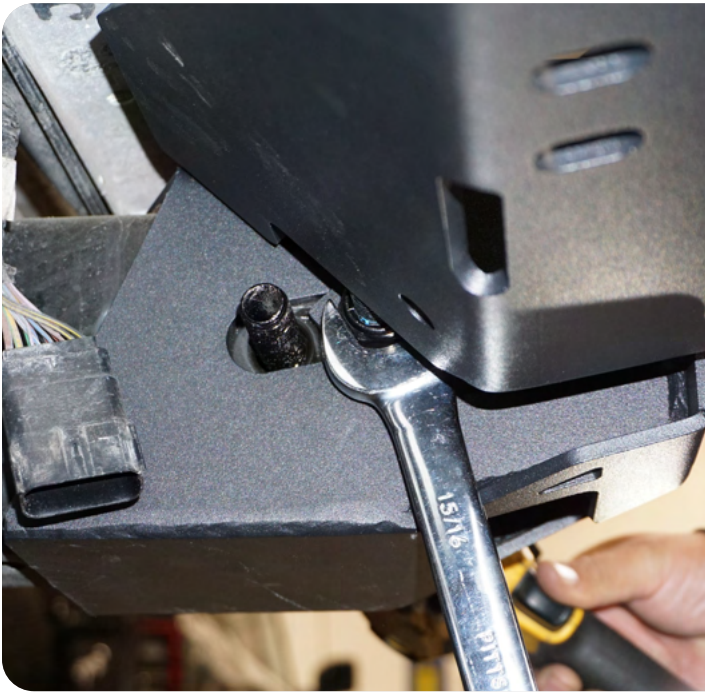




STEP 35 | INSTALL THE LAST FRONT BOLT ON EACH SIDE AND SECURE.



STEP 36 | SECURE (1) M16 FLAT WASHER AND NYLON NUT TO THE FENDER BOLT. PLACE WINCH MOUNT BRACKET ON THE REAR BOLT. LOOSELY INSTALL THE WASHER AND NUT.



STEP 37 | INSTALL THE (1) M12X30 ALLEN BOLT, WASHER, AND NUT PER SIDE TO THE WINCH MOUNT BRACKET. USING A #8 ALLEN SOCKET AND 19MM WRENCH, SECURE BOLT AND NUT.



STEP 38 | IF INSTALLING A WINCH, INSTALL IT NOW USING THE HARDWARE PROVIDED WITH THE WINCH TO SECURE IT TO THE WINCH MOUNT.



STEP 39 | INSTALL BUMPER TO VEHICLE ENSURING TO NOT SCRAP THE D-RINGS OR THE BUMPER AS IT IS PLACED OVER THE WINCH PLATE.

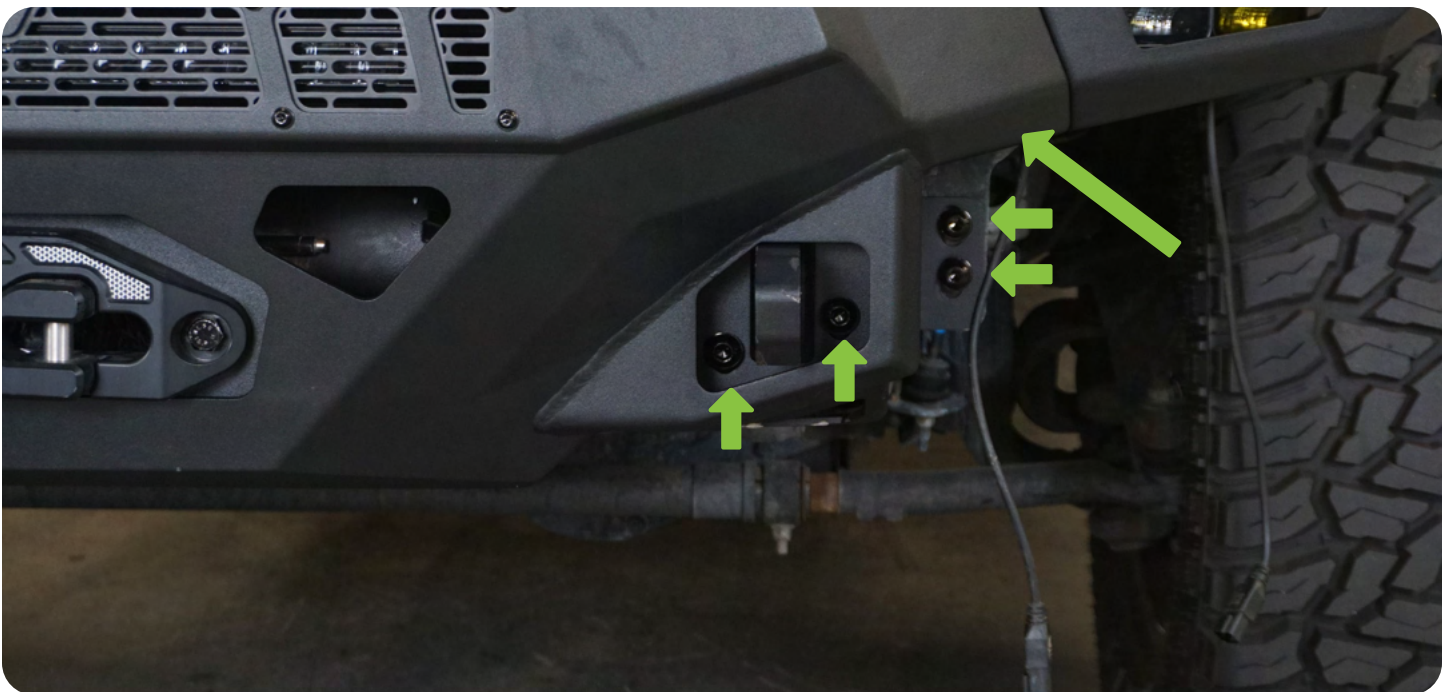
NOTE: WE RECOMMEND HAVING A SECOND PAIR OF HANDS TO HELP WITH THIS PROCESS TO AVOID DAMAGE TO THE BUMPER, VEHICLE, OR PERSONAL INJURY. AVOID DRAGGING ON D-RINGS AS IT COULD RESULT PREMATURE DAMAGE TO THE COATING.



STEP 40 | INSTALL THE (2) M12X30 ALLEN BOLT, WASHER AND NUTS TO THE FRAME.

INSTALL THE (2) M12X30 ALLEN BOLT, WASHER AND NUTS ON EACH SIDE OF THE D-RINGS.

INSTALL THE (1) M12X40 HEX BOLTS AND OVERSIZE WASHER BEHIND THE BUMPER WHERE THE NUTCLIP WAS INSTALLED.



STEP 41 | ONCE YOUR BUMPER IS ALIGNED, SECURE YOUR M12X30 ALLEN BOLTS WITH #8 SOCKET AND 19MM WRENCH. SECURE YOUR HEX BOLT USING 18MM SOCKET.



STEP 42 | PLUG YOUR HARNESS BACK TO YOUR VEHICLE.



STEP 43 | IF INSTALLING A BULL BAR. REMOVE THE (8) COUNTERSUNK BOLTS USING A #4 ALLEN TOOL/SOCKET.



STEP 44 | USING THE PROVIDED HARDWARE ON YOUR BULL BAR, LOOSELY INSTALL THE BOLTS UNTIL THE BAR IS PROPERLY ALIGNED.



STEP 45 | ONCE PROPERLY ALIGNED, SECURE YOUR BOLTS.

SECURE ALL YOUR BOLTS AND NUTS ONCE EVERYTHING IS PROPERLY ALIGNED.



CONGRATULATIONS

YOU ARE FINISHED WITH THE INSTALL OF THE 2017-2022 F-250/350 SPEC SERIES FRONT BUMPER.

+ SHARE YOUR PICS

WE LOVE SEEING HOW OUR CUSTOMERS USE THEIR DV8 OFFROAD PRODUCTS AND FOLLOWING ALONG WITH YOUR ADVENTURES. TAG US IN YOUR PHOTOS @DV8OFFROAD.WE ENJOY SHARING CUSTOMER PHOTOS ON OUR FEED.



+ WRITE A REVIEW

ARE YOU HAPPY WITH YOUR NEW DV8 OFFROAD PRODUCT? WE WOULD LOVE TO HEAR AND SEE YOUR EXPERIENCE. VISIT THE PRODUCT PAGE AND CLICK "WRITE A REVIEW". ADD A SHORT REVIEW AND UPLOAD A FEW PHOTOS TO BE FEATURED ON THE PRODUCT PAGE.

WWW.DV8OFFROAD.COM

+ NEED HELP?

IF YOU ARE HAVING ANY ISSUES WITH YOUR PRODUCT, PLEASE REACH OUT. DV8 OFFROAD IS A COMPANY OF OFF ROAD ENTHUSIASTS THAT DESIGN AND USE OUR OWN PRODUCTS, SO WE WANT YOU TO BE JUST AS STOKED ON YOUR NEW PARTS AS WE ARE.

P. 855.680.9595

E. SALES@DV8OFFROAD.COM

