

## TUNDRA TUBE BUMPER

14-21 TOYOTA TUNDRA

FBTT2-07



### TOOLS REQUIRED

- 10, 12, 14, 17, 21mm Sockets
- 10&22mm wrenches
- #4 Allen tool
- Trim Tool
- Safety Glasses

### SKILL LEVEL

- Novice/Intermediate
- 2 persons

Little skill level required, however, additional help is required for removal and installation of bumpers.

### TIME REQUIRED

- 4.5 Hours

Time to install this should take about four and a half hours.

## WARNINGS/CAUTIONS BEFORE STARTING INSTALLATION

Before you install this kit — Read and understand all instructions, warnings, cautions, and notes contained in this installation instruction guide. Consult your vehicle owner's manual for proper disconnection of electrical and lifting of vehicle if required for installation of this product.

This install may require some technical skills and knowledge of basic mechanical work. If you do not feel that you are capable of performing this install please take this product to a trained professional.

After reading this guide please contact us with any questions or concerns before installing product.  
Customer Service: 855-680-9595

*DV8 Offroad is not responsible for any bodily injury or harm to you or your vehicle as a result of an improper install.*

Proper installation of this kit required knowledge of the factory recommended procedures for removal and installation of original equipment components. We recommend that the factory shop manual and any special tools needed to service your vehicle be on hand during the installation. Installation of this kit without proper knowledge of the factory recommended procedures may affect the performance of these components and the safety of the vehicle

- Always wear eye protection when operating power tools

*Inspect all contents of this package to make sure product is not damaged and all installation hardware has been included. If parts are missing from kit, please be prepared to provide the following information*

1. Name of purchase location
2. Bar Code on side of box
3. Date above bar code
4. Date inside box cover

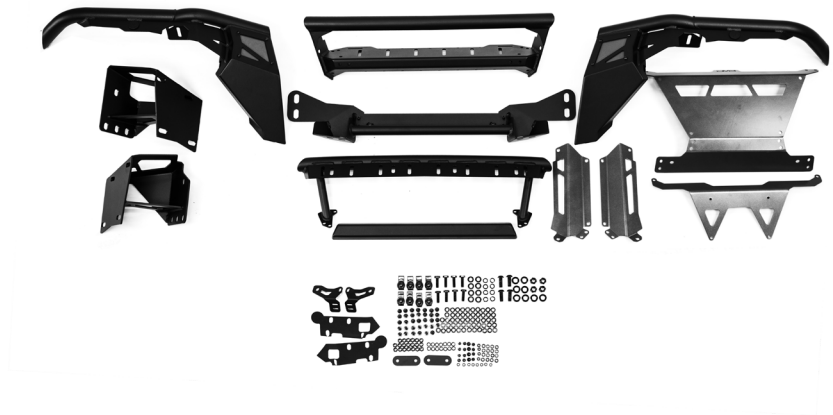


# INSTALLATION MANUAL

Begin by unpacking all items and inspecting for missing pieces or damage. If you have any concerns, please contact the company the product was purchased from. Extra hardware may be included with the product.

## HARDWARE INCLUDED

- |                             |                             |
|-----------------------------|-----------------------------|
| (4) M12x30 Allen head bolts | (14) M8 Split Washers       |
| (4) M12 Nylock Nuts         | (54) M8 Flat washers        |
| (8) M12 Flat Washers        | (8) M6x20 Allen head bolts  |
| (8) M10x30 Hex head bolts   | (4) M6x14 Countersunk bolts |
| (8) M10 Flat washers        | (16) M6 Flat washers        |
| (8) M10 Clip nuts           | (8) M6 Split washers        |
| (34) M8x20 Allen head bolts | (4) M6 Cap nuts             |
| (20) M8 Nylock nuts         | (6) M6 Nylock nuts          |



**STEP 1** | Remove the 3 bolts using a 10mm and 12mm and frame push pin securing the wheel well using a 12mm socket, 10mm socket and a trim tool.



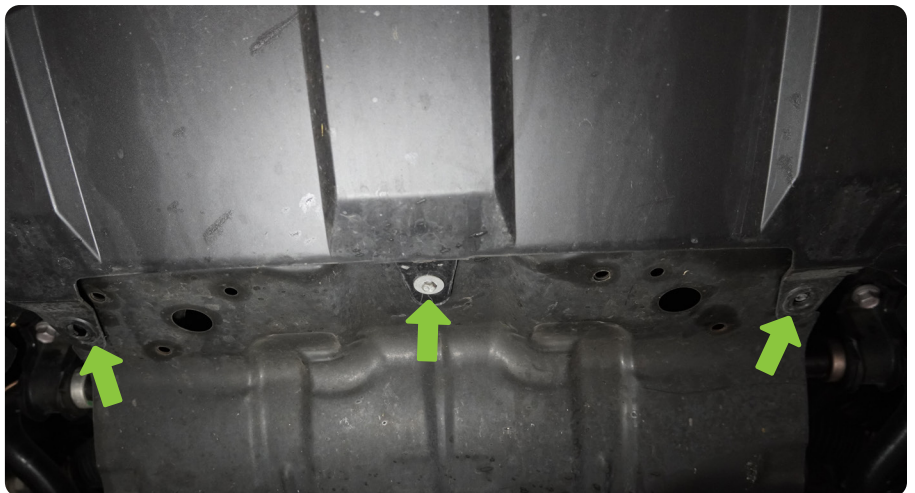
# INSTALLATION MANUAL

**STEP 2 |** Disconnect the fog lights and parking sensors (if equipped). The plugs are located on each side of the bumper behind the wheel wells.

The parking sensors harnesses are a 3 wire plug.



**STEP 3 |** Using a 10mm socket, remove the 3 bolts securing the bumper to the factory skid plate.





## INSTALLATION MANUAL

---

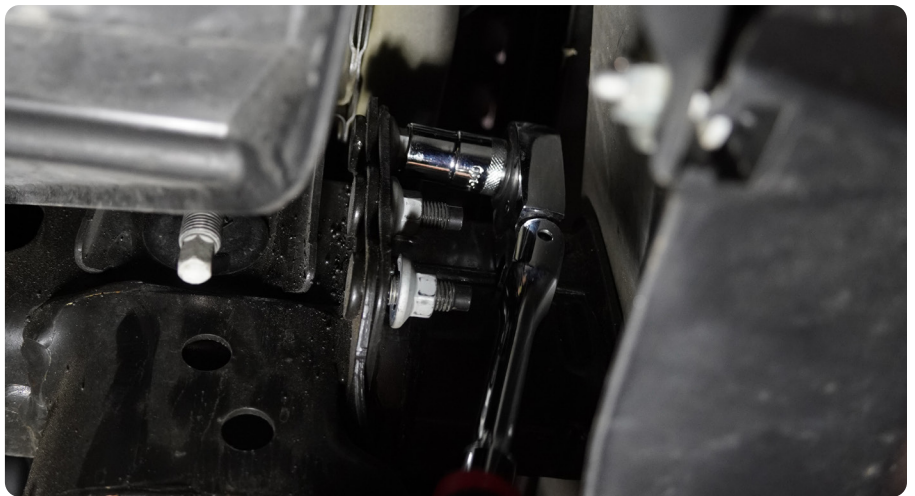
### STEP 4 | (Optional)

Remove the factory tow hooks using a 17mm socket.



### STEP 5 | Use a 14mm wrench or deep socket to remove the 4 bumper mounting nuts on each side.

This hardware will be reused.





# INSTALLATION **MANUAL**

**STEP 6 |** With assistance pull the bumper away from the vehicle.

Ensure all harness retaining clips have been removed from the bumper with a trim tool.



**STEP 7 |** Remove the parking sensors from the OEM Bumper. First, unplug the sensor then, slide the white plastic piece to the side. Push the sensor out the front of the bumper.

Make sure to keep note of the location of the parking sensors so you can install them in the same position on the DV8 bumper.



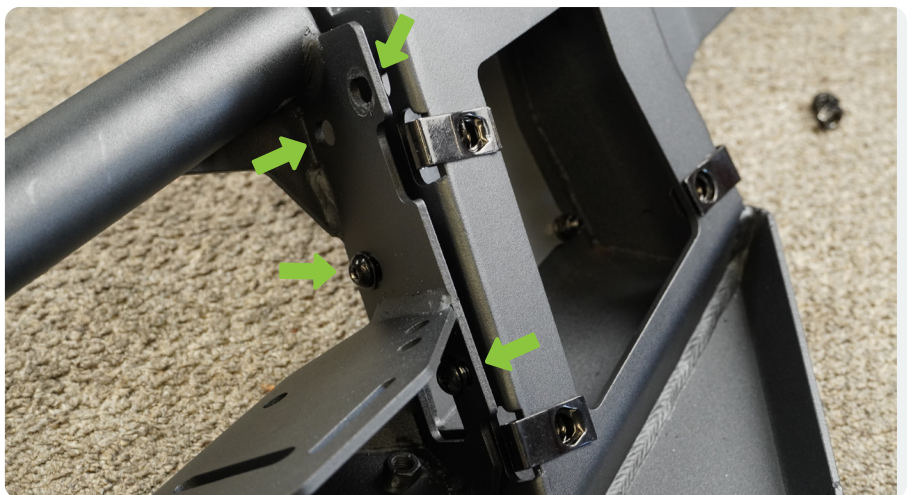
# INSTALLATION MANUAL

**STEP 8 |** With the factory bumper removed we can now work on assembling the DV8 Tube bumper.

Install the provided nut clips on to the bumper wings as shown.



**STEP 9 |** Using a #5 allen tool and 13mm socket with the provided M8 attach the wings to the bumpers center section that houses the light bar.





## INSTALLATION MANUAL

**STEP 10 |** Loosely connect the center and cross bar to the wings using a #5 allen tool and a 13mm socket with the provided M8 hardware.

Loosely connect the lower cross bar to the wing using a #8 allen tool and 19mm socket with the provided M12 hardware.

If the bolt uses a nylock nut, you will not use a split lock washer.



**STEP 11 |** Before securing any hardware, ensure the upper tube are aligned and level.





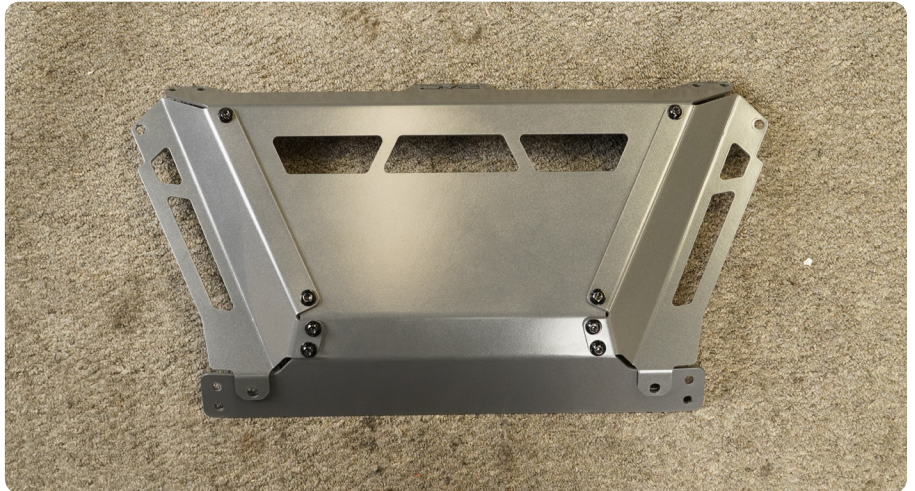
## INSTALLATION MANUAL

**STEP 12** | With the tubes aligned and level, secure all hardware in place.



**STEP 13** | Moving over to the skid plates, attach the skid plate side to the center section using a #5 allen tool and 13mm socket with the provided M8 hardware as shown.

If the bolt uses a nylock nut, you will not use a split lock washer.





## INSTALLATION MANUAL

**STEP 14** | Place the built skid plate section onto the front of the tube bumper assembly.



**STEP 15** | Loosely secure the skid plate section to the tube assembly using the provided M8 hardware and a #5 allen tool.

Use (1) M8 split washer and (1) M8 flat washer per M8 bolt.



**STEP 16** | At the bottom of the skid plate, use the provided M6 hardware and a #4 allen tool to secure the skid plate to the lower cross bar.

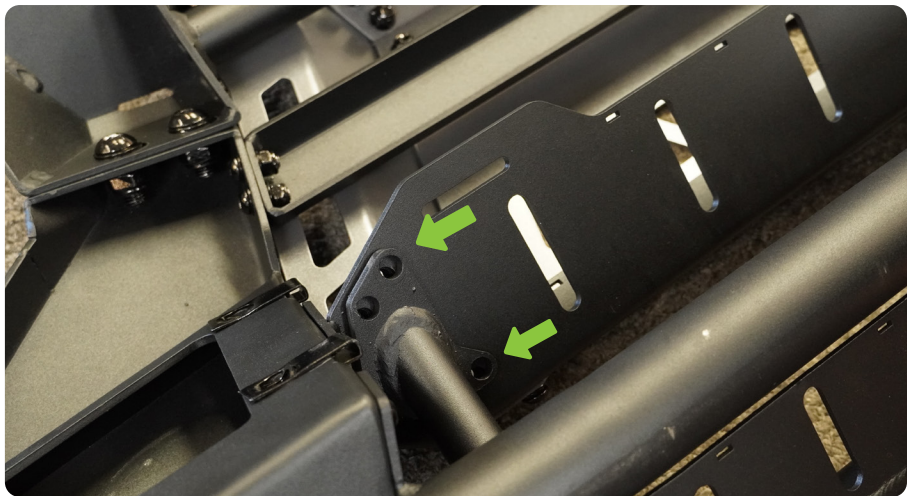


## INSTALLATION MANUAL

**STEP 17** | With all skid plate hardware loosely installed, now secure all M8 and M6 hardware using a #5 allen tool and #4 allen tool.



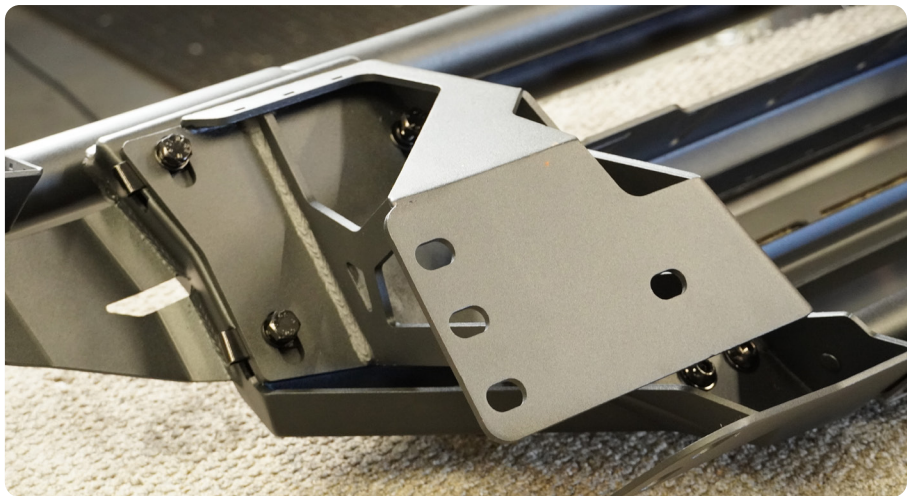
**STEP 18** | The DV8 tube bumper comes with an optional push/light bar. If you wish to run the push/light bar mount the push/light bar using the provided M8 hardware and a #6 allen tool.







**STEP 19** | Attache the bumper mounting bracket to the wings using the provided M10 hex head bolts.



## INSTALLATION MANUAL

**STEP 20** | If you are planning to run a light bar within the bumper, mount the provided light bar brackets to the light bar using the hardware provided with your light bar.

These are designed for the DV8 lights, Baja Designs, and Rigid.



**STEP 21** | Using a #4 allen tool and 10mm wrench, mount the light bar brackets to the bumpers center section using the provide M6 hardware.





## INSTALLATION MANUAL

**STEP 22** | If you are planning to run Pod lights, mount your pod lights at this time using the hardware provided with the light.

Double check that all bumper hardware is secure.



**STEP 23** | With the bumper assembled, with assistance, lift the bumper up to the frame rails.



**STEP 24** | Secure the DV8 tube bumper to the frame rails using the factory hardware and a 14mm socket.





## INSTALLATION MANUAL

**STEP 25** | With the bumper mounted in place we can now adjust the bumper to grille gap.

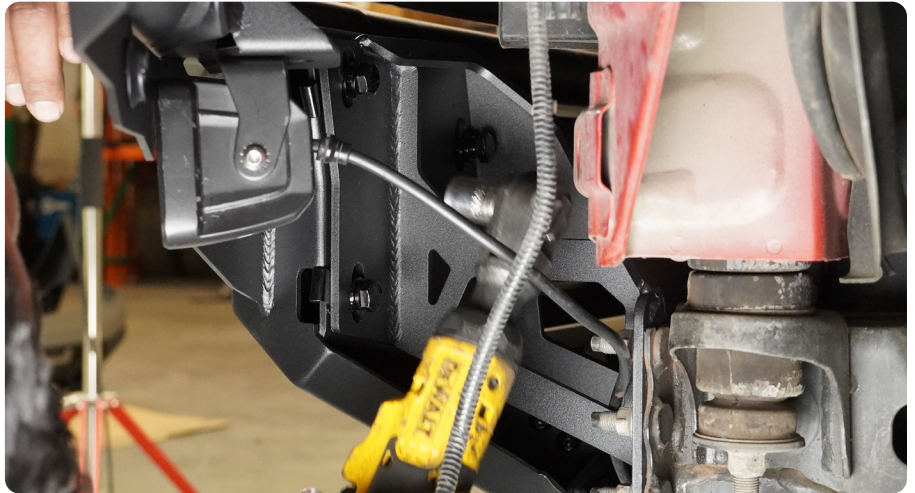


**STEP 26** | Loosen the bolts that secure the bumper to frame rail brackets using a 17mm socket.

*Tech Tip: Place a jack at the lower corner of the bumper as shown. Use the jack to lift the bumper up to close the gap to your preferred spacing.*

With the bumper to grille gap adjusted, secure the bumper in place using a 17mm socket.

Complete the adjustment process on both sides





**STEP 27** | Double check that all hardware is secured.

Congratulations, installations of the DV8 Tundra Tube bumper is now complete.





## INSTALLATION MANUAL

### STEP 28 | (Optional Step - for customers running a winch only)

Using a 12mm socket, remove the bolt securing the power steering coolers mounting bracket on the drivers side.

Use a 12mm socket to loosen the passenger side power steering cooler mounting bracket.

Use the provided spacer bracket and M6 hardware to push the power steering cooler back towards the radiator.

Secure the spacer bracket to the cross member using the factory bolt.

Secure the passenger side factory bolt.

