

## REAR DOOR MOLLE POCKET

03-09 LEXUS GX470

MPGX-03



### TOOLS REQUIRED

- Trim Clip Tool
- 4mm Allen Bit
- 10mm Wrench
- Philips Head Screwdriver
- 1/4" Drill Bit

### SKILL LEVEL

- Novice/Intermediate
- 1 (you) to 2 persons

Little skill level required, you can easily install it by yourself however, additional help will be useful.

### TIME REQUIRED

- 1 Hour

Time to install this should only take about an hour.

## WARNINGS/CAUTIONS BEFORE STARTING INSTALLATION

Before you install this kit – Read and understand all instructions, warnings, cautions, and notes contained in this installation instruction guide. Consult your vehicle owner's manual for proper disconnection of electrical and lifting of vehicle if required for installation of this product.

This install may require some technical skills and knowledge of basic mechanical work. If you do not feel that you are capable of performing this install please take this product to a trained professional.

After reading this guide please contact us with any questions or concerns before installing product.  
Customer Service: 855-680-9595

*DV8 Offroad is not responsible for any bodily injury or harm to you or your vehicle as a result of an improper install.*

Proper installation of this kit required knowledge of the factory recommended procedures for removal and installation of original equipment components. We recommend that the factory shop manual and any special tools needed to service your vehicle be on hand during the installation. Installation of this kit without proper knowledge of the factory recommended procedures may affect the performance of these components and the safety of the vehicle

- Always wear eye protection when operating power tools

*Inspect all contents of this package to make sure product is not damaged and all installation hardware has been included. If parts are missing from kit, please be prepared to provide the following information*

1. Name of purchase location
2. Bar Code on side of box
3. Date above bar code
4. Date inside box cover

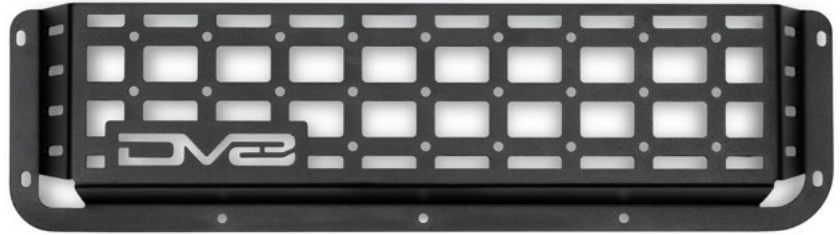


# INSTALLATION MANUAL

Begin by unpacking all items and inspecting for missing pieces or damage. If you have any concerns, please contact the company the product was purchased from. Extra hardware may be included with the product.

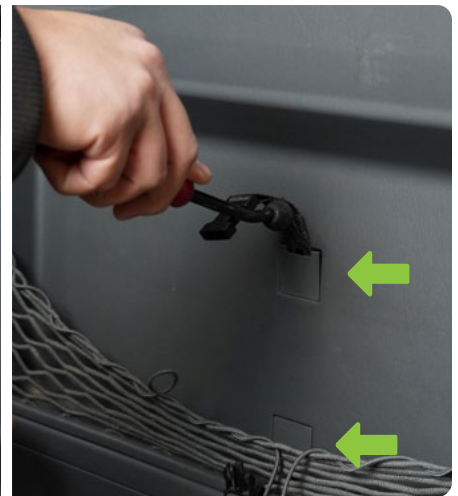
## HARDWARE INCLUDED

- (7) M6x20 Allen
- (14) M6 Flat Washer
- (7) M6 Nylon Lock Nuts



**STEP 1** | Use a trim clip tool to remove the four plastic retaining clips.

Two are located underneath the handle. and two are located behind the pocket net.



# INSTALLATION MANUAL

**STEP 2** | Use a philips head screwdriver to remove the screws behind the plastic retaining clips located behind the pocket net.



**STEP 3** | Remove the factory tool kit and cover by turning the plastic handles to unlock the cover.

Set off to the side.



# INSTALLATION **MANUAL**

**STEP 4** | Use trim clip tools to remove the trim for the hatch door.

Work your way carefully around the perimeter and be sure to pull straight away from the door to avoid breaking the plastic fastener clips.





# INSTALLATION MANUAL

**STEP 5** | Use a philips head screwdriver to remove the screws securing the factory net to the plastic trim, and set the net off to the side.



**STEP 6** | Use a 1/4" drill bit to drill the factory mounting holes so they will accept the provided hardware.



# INSTALLATION MANUAL

**STEP 7** | Mount the DV8 Molle Pocket using the provided M6 hardware with a 4mm allen bit and 10mm wrench.



**STEP 8** | Re-install the door trim on the vehicle by lining up the plastic fasteners and pressing them into place.

They should “snap” into place.



## INSTALLATION MANUAL

**STEP 9** | Use a philips head screwdriver to re-install the factory screws.

Then re-cover with the plastic retaining covers.



**STEP 10** | Snap the plastic clips located underneath the handle into place by pressing them.



**STEP 11** | Return the factory toolkit to its storage location and lock the plastic cover in place by turning the handles.



# INSTALLATION MANUAL

**STEP 12** | Congrats! You are finished with the install of the 03-09 Lexus GX470 DV8 Rear Door Molle Pocket.

