

FRONT DOOR SLIM MOLLE POCKETS

11-18 JEEP JK (4 DOOR)

MPJK-07



TOOLS REQUIRED

- T-25 Torx Tool
- Phillips Screwdriver
- Preferred Cutting Tool

SKILL LEVEL

- Novice/Intermediate
- 1 (you) person

Little skill level required, you can easily install it by yourself however, additional help will be useful

TIME REQUIRED

- .5 Hour

Time to install this should only take about half hour

WARNINGS/CAUTIONS BEFORE STARTING INSTALLATION

Before you install this kit – Read and understand all instructions, warnings, cautions, and notes contained in this installation instruction guide. Consult your vehicle owner’s manual for proper disconnection of electrical and lifting of vehicle if required for installation of this product.

This install may require some technical skills and knowledge of basic mechanical work. If you do not feel that you are capable of performing this install please take this product to a trained professional.

After reading this guide please contact us with any questions or concerns before installing product.
Customer Service: 855-680-9595

DV8 Offroad is not responsible for any bodily injury or harm to you or your vehicle as a result of an improper install.

Proper installation of this kit required knowledge of the factory recommended procedures for removal and installation of original equipment components. We recommend that the factory shop manual and any special tools needed to service your vehicle be on hand during the installation. Installation of this kit without proper knowledge of the factory recommended procedures may affect the performance of these components and the safety of the vehicle

- Always wear eye protection when operating power tools

Inspect all contents of this package to make sure product is not damaged and all installation hardware has been included. If parts are missing from kit, please be prepared to provide the following information

1. Name of purchase location
2. Bar Code on side of box
3. Date above bar code
4. Date inside box cover



INSTALLATION MANUAL

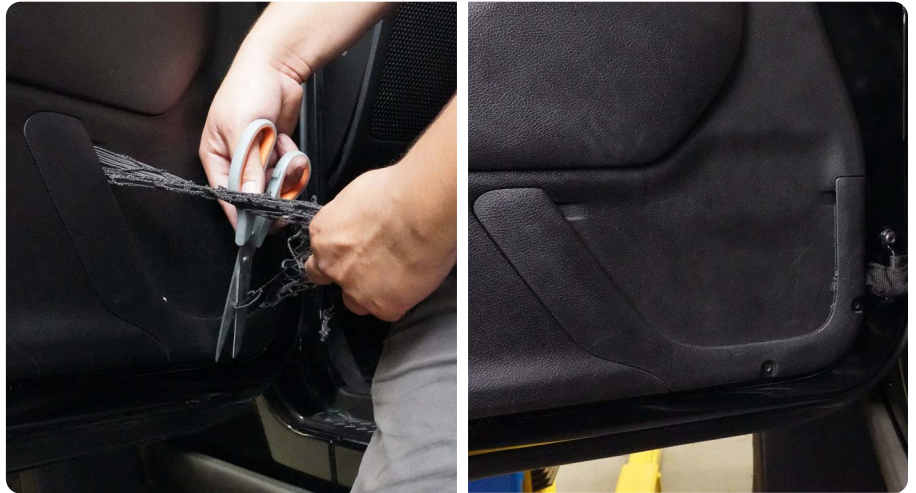
Begin by unpacking all items and inspecting for missing pieces or damage. If you have any concerns, please contact the company the product was purchased from. Extra hardware may be included with the product.

HARDWARE INCLUDED

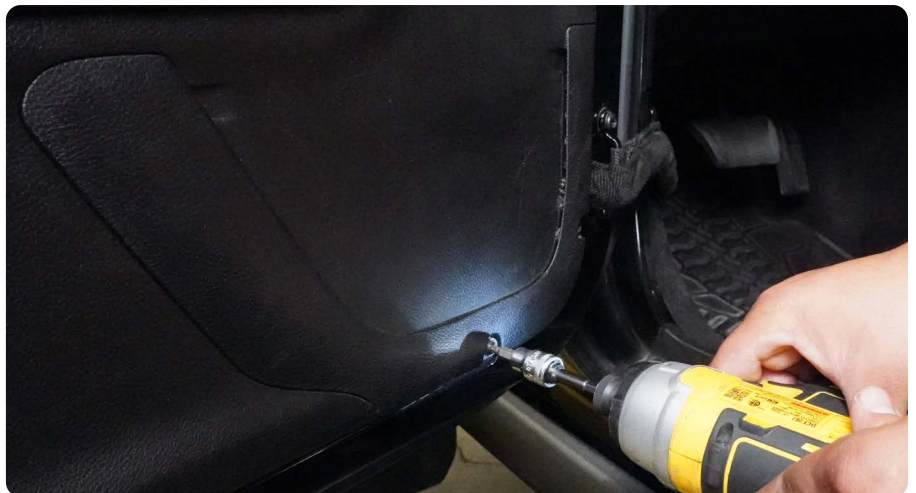
- (2) M5x30mm Phillips Head Screws
- (2) Flat Washers
- (2) Spacers
- (2) "L" Shaped Mounting Tabs



STEP 1 | Begin by using scissors or cutting tool to remove the factory door pocket netting and elastic band.



STEP 2 | Use a T-25 socket to remove screw at bottom of door panel.



INSTALLATION MANUAL

STEP 3 | Install the DV8 Front Door Slim Molle Pocket by sliding the pockets tabs between the door panel and the factory netting trim panel.



INSTALLATION MANUAL

STEP 4 | Put the provided spacer, Phillips head screw, flat washer and mounting tab together as shown.



STEP 5 | Install the mounting tab into the cutout at the bottom of the Slim Molle Pocket.



STEP 6 | While pressing down on the pocket use a Phillips head screw driver to secure the pocket's mounting tab in place.



INSTALLATION MANUAL

STEP 7 | Double check that the mounting hardware is secure.

Congratulations, installation of the DV8 Front Door Slim Molle Pockets is now complete.

