

Spec Series Rear Bumper

2022+ Bronco Raptor

RBBR-05



TOOLS REQUIRED

- 10,13,18, 21mm Sockets
- #4 Allen Bit
- Zip Ties
- Silicone (Optional)
- Electrical Tape
- Safety Glasses

SKILL LEVEL

- Novice/Intermediate
 - 2 People
- Little skill level required.

TIME REQUIRED

- Approximately 3 Hours

WARNINGS/CAUTIONS BEFORE STARTING INSTALLATION

Before you install this kit – Read and understand all instructions, warnings, cautions, and notes contained in this installation instruction guide. Consult your vehicle owner's manual for proper disconnection of electrical and lifting of vehicle if required for installation of this product.

This install may require some technical skills and knowledge of basic mechanical work. If you do not feel that you are capable of performing this install please take this product to a trained professional.

After reading this guide please contact us with any questions or concerns before installing product.
Customer Service: 855-680-9595

DV8 Offroad is not responsible for any bodily injury or harm to you or your vehicle as a result of an improper install.

Proper installation of this kit required knowledge of the factory recommended procedures for removal and installation of original equipment components. We recommend that the factory shop manual and any special tools needed to service your vehicle be on hand during the installation. Installation of this kit without proper knowledge of the factory recommended procedures may affect the performance of these components and the safety of the vehicle

- Always wear eye protection when operating power tools

Inspect all contents of this package to make sure product is not damaged and all installation hardware has been included. If parts are missing from kit, please be prepared to provide the following information

1. Name of purchase location
2. Bar Code on side of box
3. Date above bar code
4. Date inside box cover



INSTALLATION **MANUAL**

STEP 1

Unplug the factory bumper from the Bronco. Locate the small plug just to the rear of the rear wheel wells on each side of the bumper.



STEP 2

Using a 13mm socket, unbolt the side bumper supports on each side of the bumper just outside of the frame rails.



STEP 3

Remove the lower four bumper bolts using a 18mm socket.

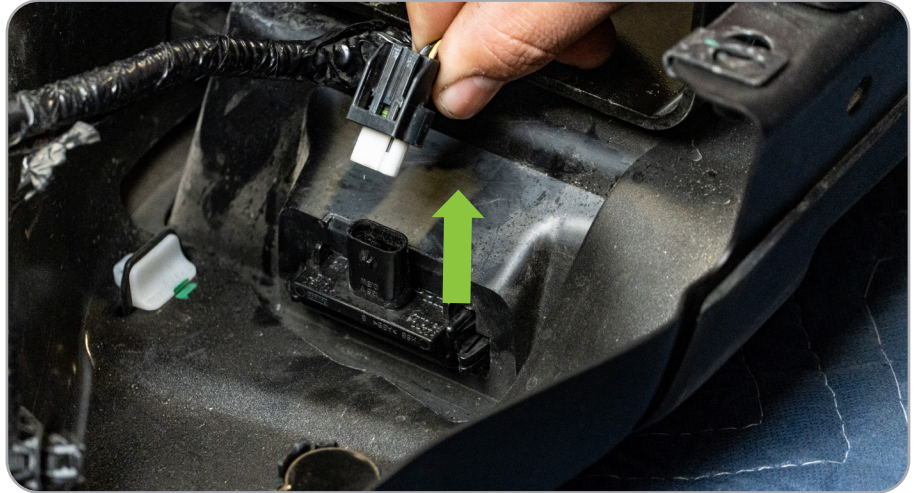
Note: When you do this, the bumper can become free from the vehicle and can fall. Ensure you have another person holding it, or the bumper secure to prevent falling and injury.



INSTALLATION MANUAL

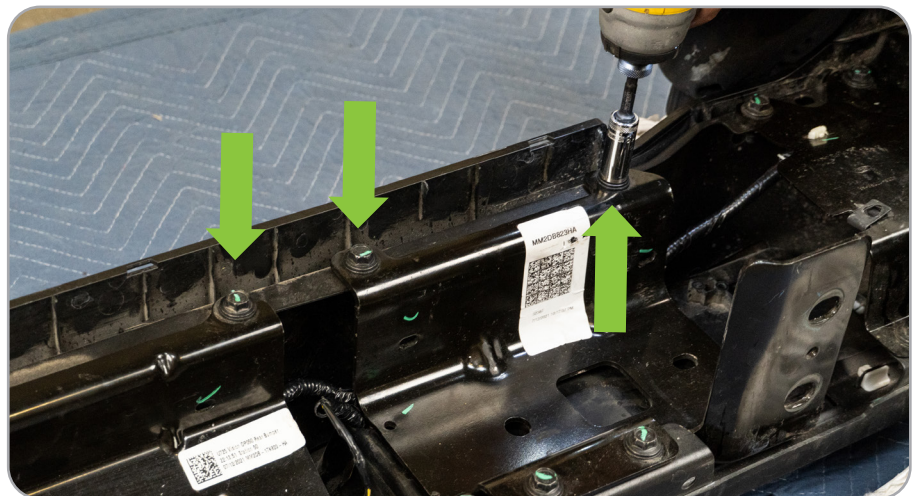
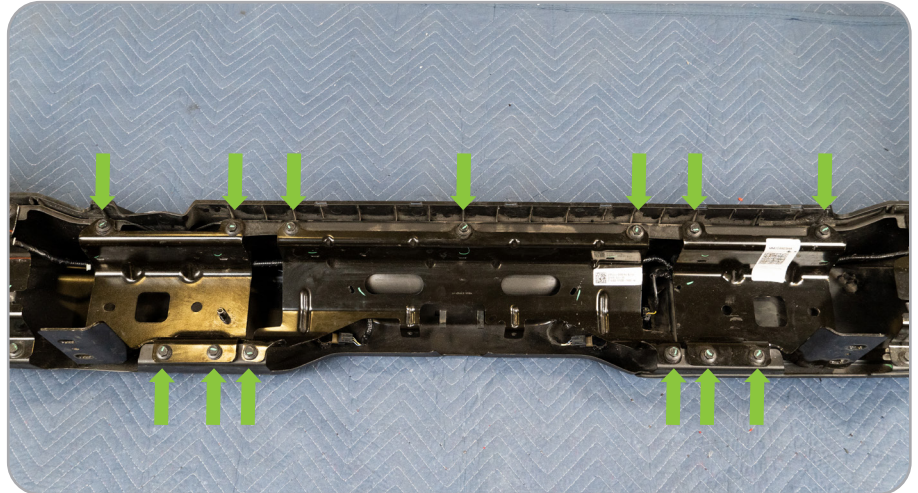
STEP 4

Once bumper is removed, lay on soft surface face down. Unclip the license plate light by squeezing the plug and pulling away from the bumper.



STEP 5

Remove the thirteen bolts holding the three center brackets using a 13mm socket.



INSTALLATION MANUAL

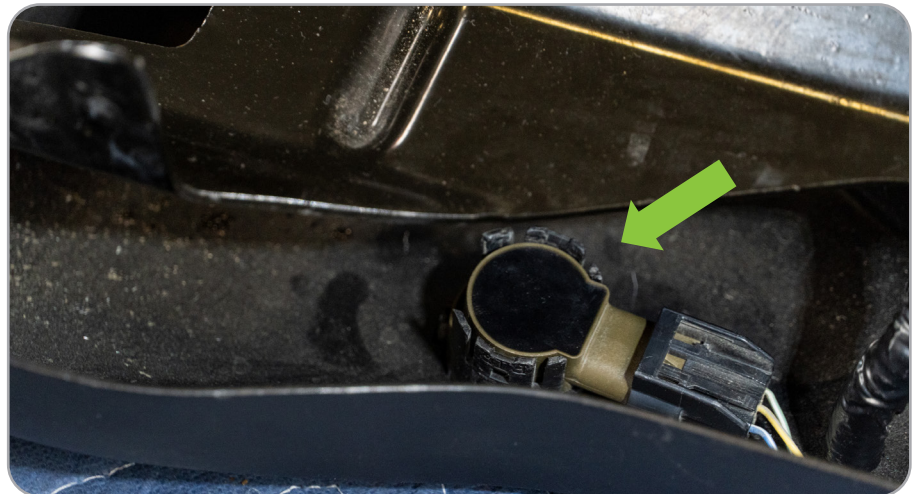
STEP 6

Using a push pin removal tool, remove point where the wire harness is connected to the bumper or brackets.



STEP 7

Remove the two center sensors from the sensor bezels by spreading the two tabs on the bezels and pull the sensor up.



STEP 8

To remove the outer sensors, spread the tabs on the inner gray sensor bezel to release the sensor, and once removed, squeeze the same tab while pulling the face of the bezel on the outside to release the bezel from the white cage.



INSTALLATION **MANUAL**

STEP 9

Lean the bumper forward, and while pulling the face of the sensor bezel from the outside of the bumper, squeeze the two tabs on the bezel near the bumper to remove the bezel.



STEP 10

Carefully, pull the wire harness away to be used on your new DV8 bumper.

You are now done with the removal of your Bronco bumper.



INSTALLATION MANUAL

STEP 1

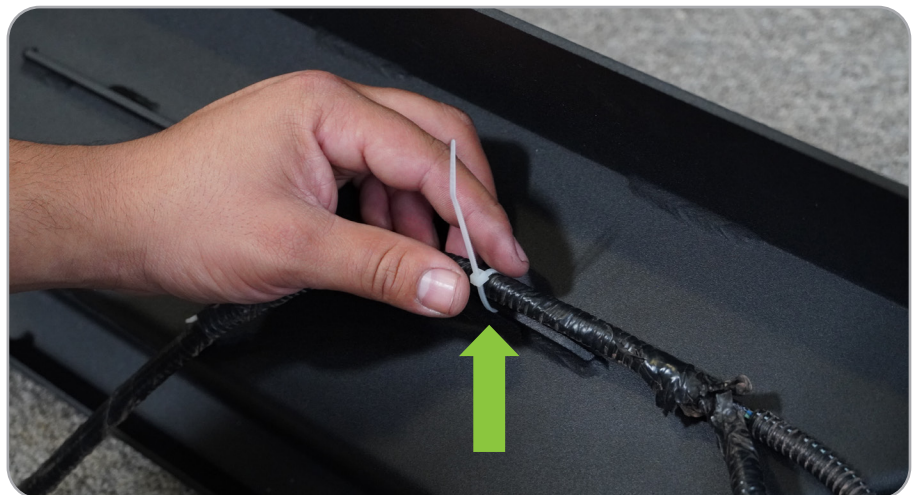
Begin by unpacking all items and inspecting for missing pieces or damage. If you have any concerns, please contact the company the product was purchased from.

| | |
|---------------------------|-----------------------|
| Hardware Included: | (4) M6 Lock Nuts |
| (6) M12x35mm Bolts | (8) M6 Flat Washers |
| (6) M12 Nuts | (1) M6 Serrated Nut |
| (6) M12 Split Nuts | (2) M4x15 Pan Head |
| (6) M14 Flat Washers | (2) M4 large washers |
| (4) M6x14mm Allen Bolts | (2) M4 spring washers |
| | (2) M4 Nuts |



STEP 2

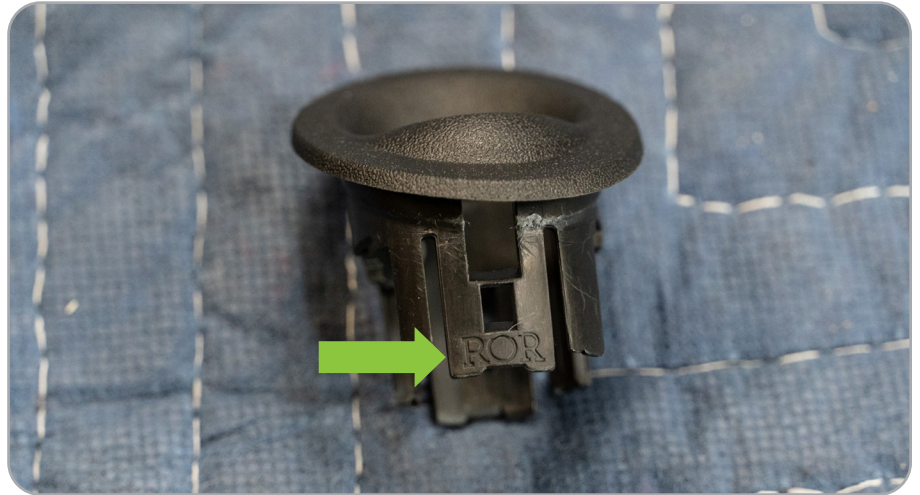
Begin by laying the bumper face down on a soft surface to prevent damaging the face. Feed the harness through the opening in the bumpers so that all sensors lay near their respective openings. Secure harness to bumper using zip ties on welded-in zip tie tabs



INSTALLATION MANUAL

STEP 3

To install the sensor bezels into the bumper, identify the location of the bezel by reading the identifier on the bezel. For example, our image shows “ROR” which stands for rear outer right.



STEP 4

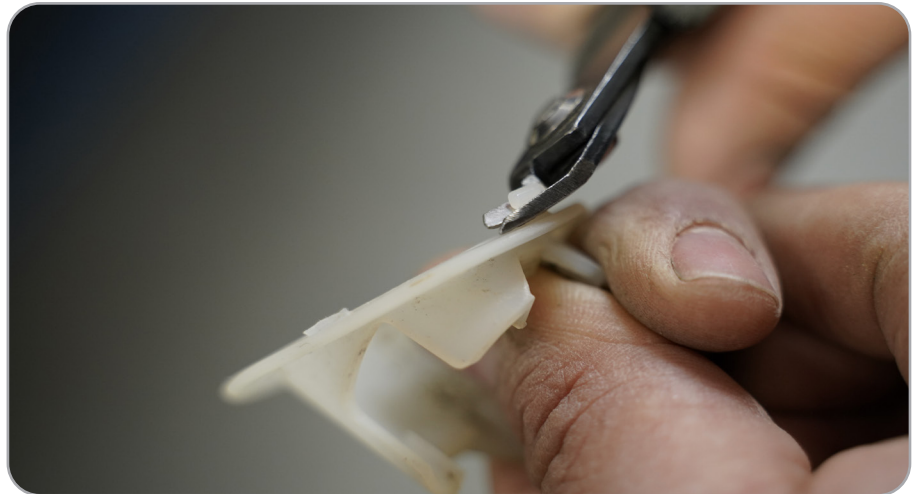
On the two center bezels, you will need to trim down the tabs on the side to allow for the thicker material our bumper uses. Trim slightly and test fit until these tabs sit on the backside of the bumper and the bezel sit flush to the face of the bumper.



INSTALLATION MANUAL

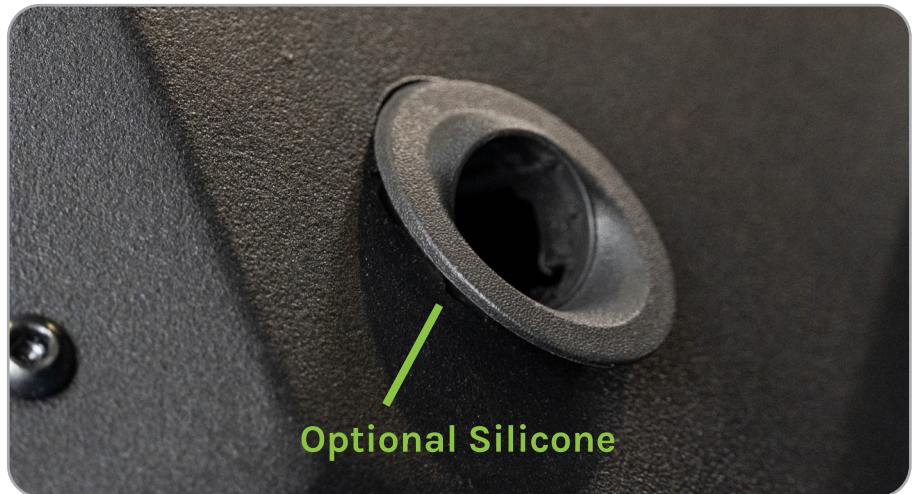
STEP 5

Trim the tabs on corner sensor bezels rear locking cage.



INSTALLATION MANUAL

Note: On the DV8 bumper, these should be oriented down.



INSTALLATION MANUAL

STEP 6

Lean the bumper back and fit the two inner sensor bezels into place.

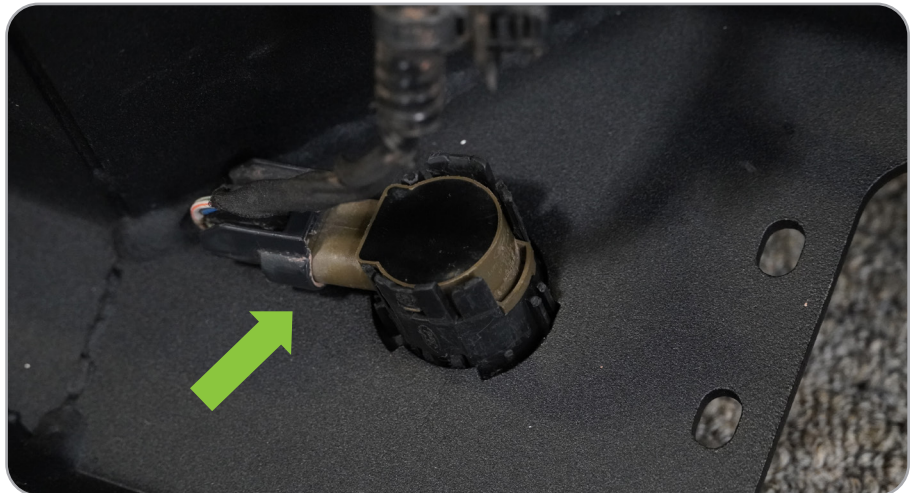
Note: Our bumpers are designed to accept both factory metal bumper and plastic bumper sensor bezels. All cutouts are cut differently to ensure each bezel is placed into the correct hole



STEP 7

Install the sensors by holding the face of the bezel and clicking the sensor into place.

Note: If the sensor will not click into place easily, you may need to trim the tabs more from step 4.



INSTALLATION MANUAL

STEP 8

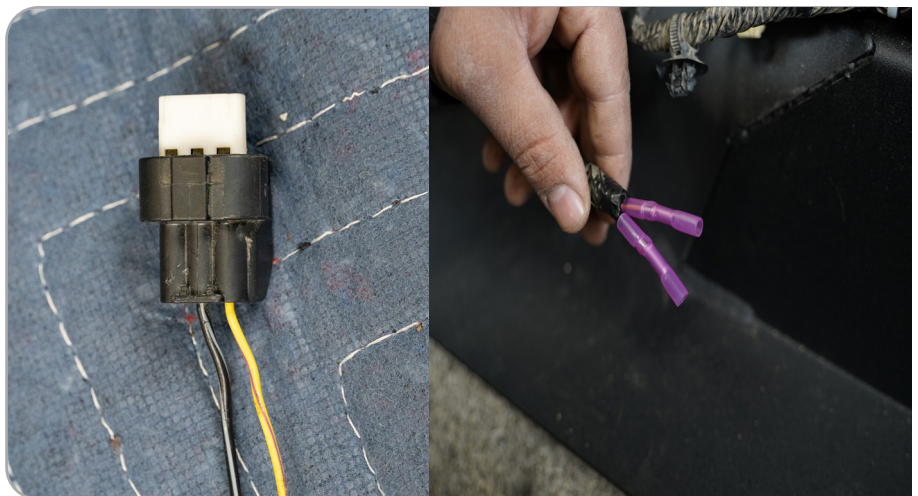
If installing Pod lights, do so at this time using the hardware provide with the lights.

Note: We are running two DV8 3 inch elite series LED Pod lights.



STEP 9

To wire up the license plate light you will need to cut off the factory connector and wire it to our new LED light, or you can opt to wire in a new plug for easy on and off connection.



INSTALLATION MANUAL

STEP 10

Install the 6 provided nut clips on to the DV8 Rear Bumper.



STEP 11

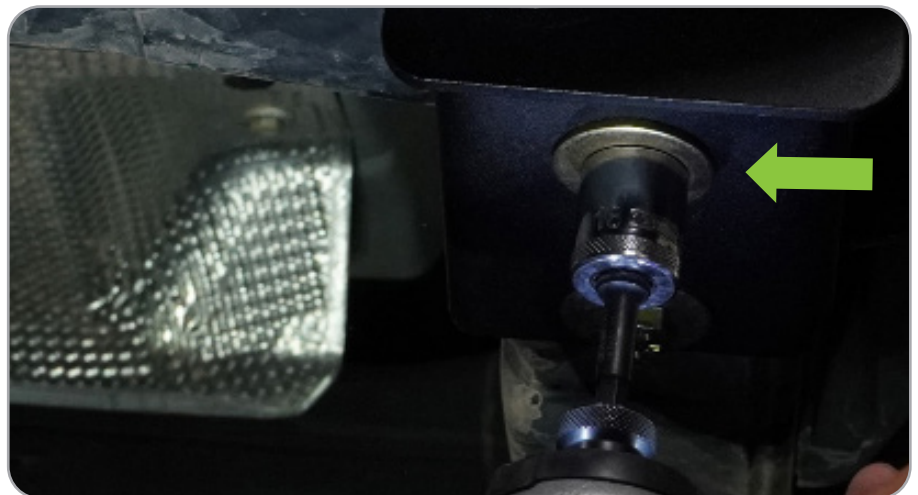
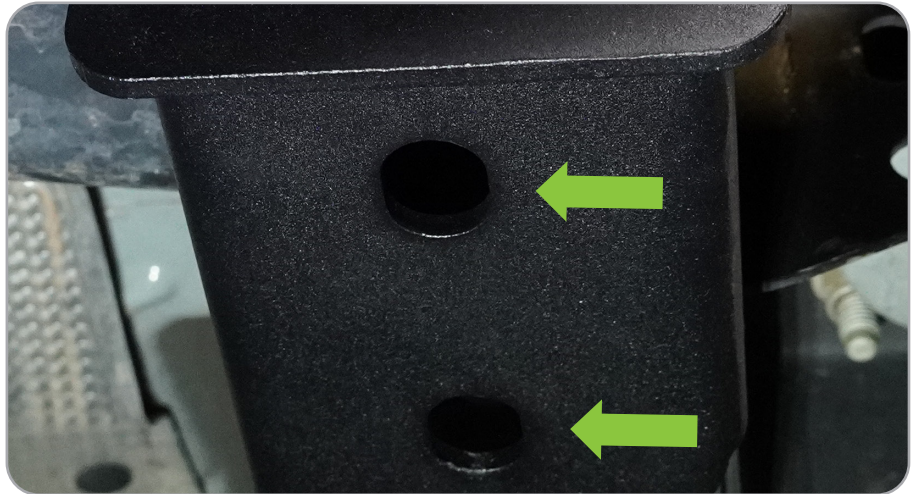
Install the Bumper mounting bracket on to the rear bumper using the six provided M12 hardware and an 18mm socket. Keep hardware semi loose to allow for adjustment after mounted onto the Bronco.



INSTALLATION MANUAL

STEP 12

With assistance, lift the bumper to the truck and reusing the factory M12 bolts with a 16mm socket, install the lower four bolts tightening to 70 ft lbs.



STEP 13

After the bumper is aligned with the vehicle, tighten all six M12 bracket bolts to the bumper until secure.



INSTALLATION MANUAL

STEP 14

Start by installing your license plate onto the relocation bracket using the provided M6 hardware with a 4mm Allen bit and a 10mm wrench.



STEP 15

Drop the provided M6 serrated nut into the rubber bumper and install onto the license plate bracket using the provided M6x20 hardware and a 4mm Allen bit.



STEP 16

Peel the paper off the provided foam and install onto the license plate light by sliding the wires through the foam.



INSTALLATION MANUAL

STEP 17

Install the license plate light onto the bracket with the light facing the license plate. Use the provided M4x15 hardware with a Philips head screwdriver and 7mm wrench.



STEP 18

Using provided wire butt connectors, connect the license plate light to the provided wiring.



STEP 19

Moving to the Bronco, remove the lug nuts from the spare tire carrier using a lug nut tool and remove the spare tire.

Note: Assistance is recommended for removing the spare tire to prevent injury or damage.



INSTALLATION MANUAL

STEP 20

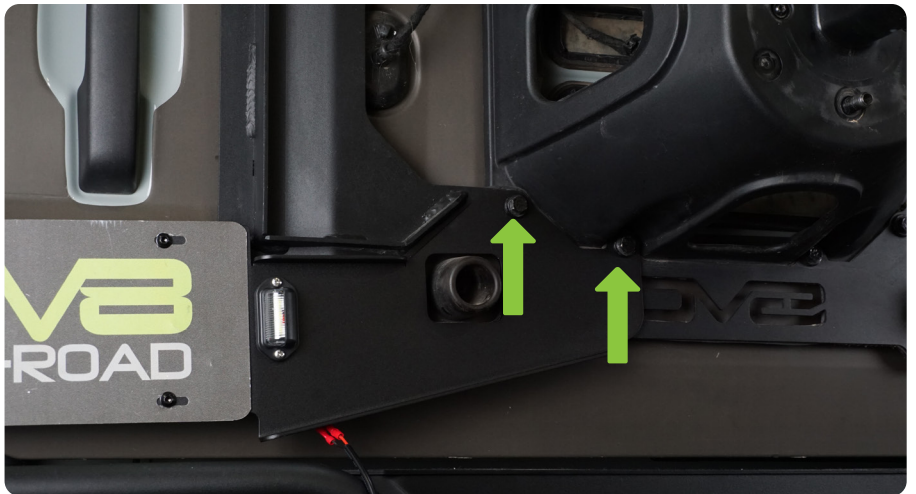
Remove the two factory bolts on the bottom driver corners of the spare tire carrier using a 13mm socket.

*Note: This is shown with our TCBR-01 backing plate. This bracket is compatible **with and without** the TCBR-01 carrier installed.*



STEP 21

Loosely install the license plate bracket onto the vehicle utilizing the factory hardware and 13mm socket. Ensure the wiring will not be pinched between the bracket and vehicle.



STEP 22

To run the wire behind the spare tire carrier and through the vent in the tailgate it may be necessary to loosen one or two additional bolts of the tire carrier to create clearance for the wire.



INSTALLATION MANUAL

STEP 23

Open the tailgate and remove the trim piece of the interior of the tailgate using a trim piece removal tool.

Unclip the fasteners on the bottom of the long trim and slide it down to remove.

Unclip the fasteners on the passenger side of the wide trim and slide to the pas-



STEP 24

Feed the wire through the vent in the tailgate while reaching inside the tailgate and feeding out of either of the “accessory ready” holes. You may choose to secure the wire to the existing wiring loom with zip ties for a cleaner feel.



INSTALLATION MANUAL

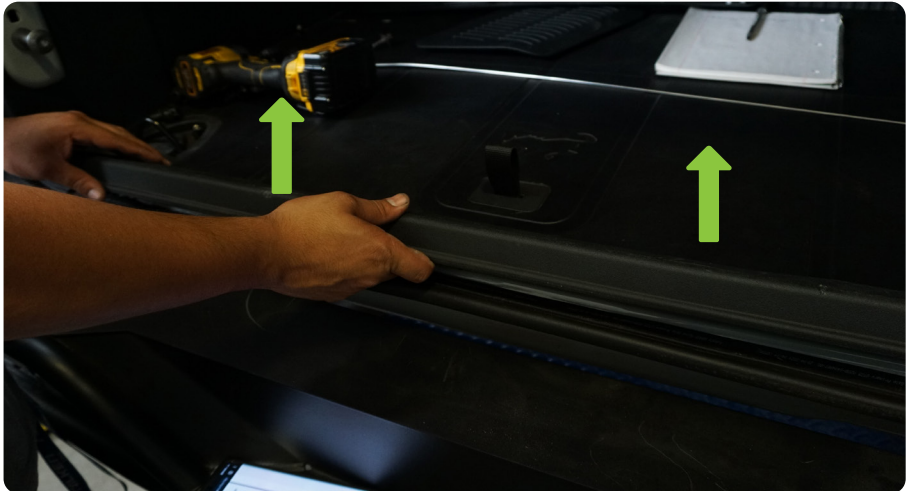
STEP 25

Partially remove the trim piece to the passenger wall of the trunk closest to the tailgate by pulling up on the bottom and out on the sides. Use a trim piece removal tool if necessary.



STEP 26

Remove the trim piece behind the compartment for the factory jack by pulling up on it. Use a trim piece removal tool if necessary. Run the wire down the sidewall and along the bottom of the interior.



STEP 27

Partially remove a section of the weatherstripping along the bottom of the trunk, near to the driver side of the vehicle and feed the wire through.

Replace the weatherstripping and all interior trim panels when finished. Finish running the wire behind the bumper to where factory license plate light wiring is located.

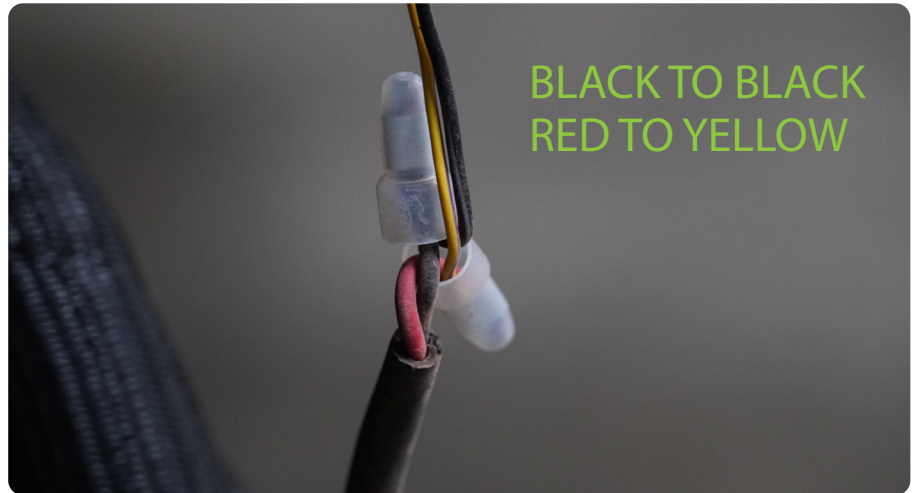


INSTALLATION MANUAL

STEP 28

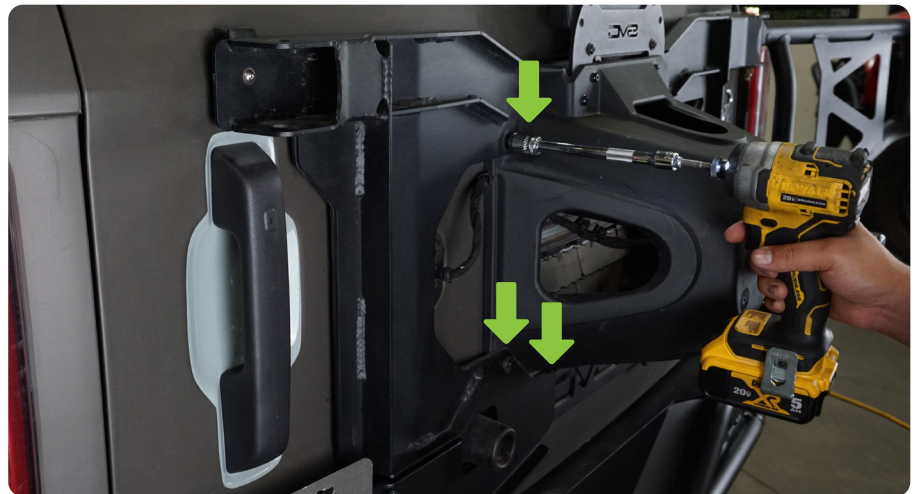
Disconnect the battery to prepare for splicing wires.

If you have a lot of excessive wire, trim it to an appropriate length. Snip the factory license plate wiring to splice the new license plate wiring. *If you wish to keep the quick disconnect wiring solution, be sure to cut the wires after this connection, so that it*



STEP 29

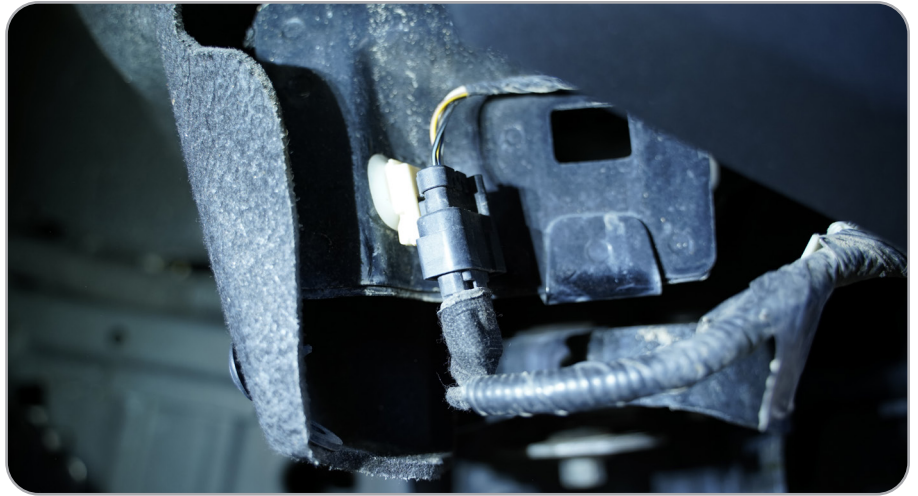
Finish securing spare tire carrier bolts securing the license plate relocation bracket using a 13mm socket. If you loosened bolts to create clearance for the wire, re-tighten these also with a 13mm socket.



INSTALLATION MANUAL

STEP 30

Plug in connectors on both sides of the bumper and check the function of the license plate light and sensors.



STEP 31

Double check all hardware is secure and wired connection are plugged in.

Congratulations installation of the RBBR-05 Spec Series Rear Bumper is now complete.

