

TUBE SERIES REAR BUMPER

21-26 F-150

RBFF1-06



TOOLS REQUIRED

- Plastic Trim Tools
- #4, #6 Allen Tools
- 10mm, 13mm, 16mm, 17mm Socket
- 10mm wrenches
- Trim Clip Tool
- Preferred Grinding Tool
- Safety Glasses

SKILL LEVEL

- Novice/Intermediate
 - 1 (you) to 2 persons
- Medium skill level required, you can easily install it by yourself however, additional help will be useful

TIME REQUIRED

- 4 Hours
- Time to install this should only take about four hour

WARNINGS/CAUTIONS BEFORE STARTING INSTALLATION

Before you install this kit – Read and understand all instructions, warnings, cautions, and notes contained in this installation instruction guide. Consult your vehicle owner’s manual for proper disconnection of electrical and lifting of vehicle if required for installation of this product.

This install may require some technical skills and knowledge of basic mechanical work. If you do not feel that you are capable of performing this install please take this product to a trained professional.

After reading this guide please contact us with any questions or concerns before installing product.
Customer Service: 855-680-9595

DV8 Offroad is not responsible for any bodily injury or harm to you or your vehicle as a result of an improper install.

Proper installation of this kit required knowledge of the factory recommended procedures for removal and installation of original equipment components. We recommend that the factory shop manual and any special tools needed to service your vehicle be on hand during the installation. Installation of this kit without proper knowledge of the factory recommended procedures may affect the performance of these components and the safety of the vehicle

- Always wear eye protection when operating power tools

Inspect all contents of this package to make sure product is not damaged and all installation hardware has been included. If parts are missing from kit, please be prepared to provide the following information

1. Name of purchase location
2. Bar Code on side of box
3. Date above bar code
4. Date inside box cover

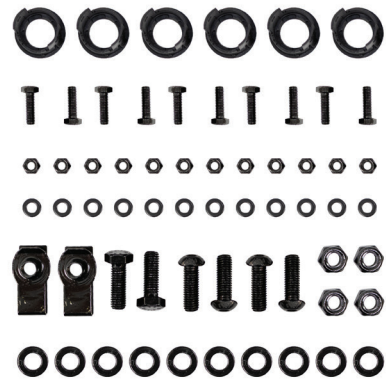


INSTALLATION MANUAL

Begin by unpacking all items and inspecting for missing pieces or damage. If you have any concerns, please contact the company the product was purchased from. Extra hardware may be included with the product.

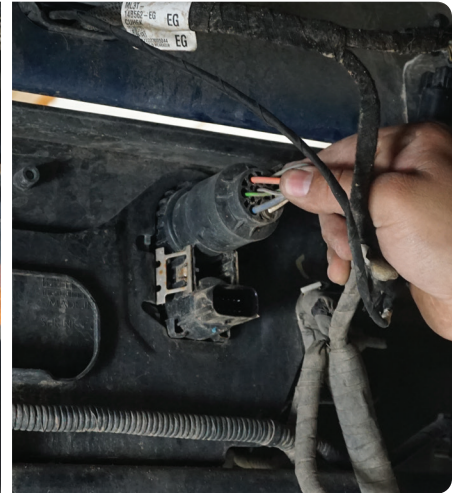
HARDWARE INCLUDED

- | | |
|--------------------------|-------------------------|
| (12) M6x20mm hex bolts | (4) M10 nylon lock nuts |
| (12) M6 nylon lock nuts | (2) M10 clip nuts |
| (24) M6 washers | (10) M10 washers |
| (2) M10x30mm hex bolts | |
| (4) M10 allen head bolts | |



STEP 1 | Begin by disconnecting the trailer connector socket using a trim clip tool.

Use the trim clip tool to remove the trailer connector socket. Depress sockets retaining clips on each side while pressing the socket out the front.



INSTALLATION MANUAL

STEP 2 | Remove both factory license plate lights using a trim clip tool.

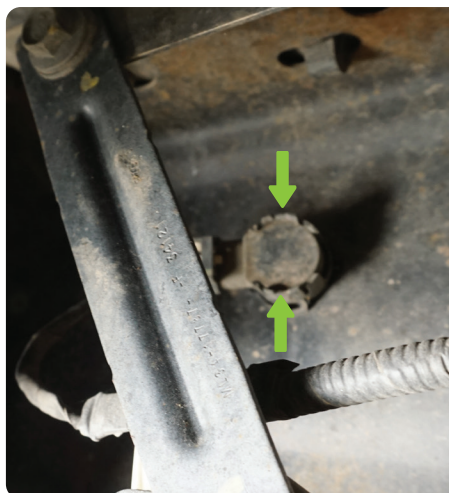
Depress the lights electrical sockets lock tab and pull the socket away from the light.

Depress the tab on the light and press the light out through the face of the bumper.



STEP 3 | Remove all parking sensor (if equipped) by spreading the sensor bezels tabs apart and pressing the sensor from the front side out the backside.

Use a trim clip tool to free the all sensor harness retaining clips.



INSTALLATION **MANUAL**

STEP 4 | Using your vehicles key, remove the spare tire access lock.



STEP 5 | Using a pair of plastic trim clip tools, pry up the bumpers plastic trim.

While prying up on the plastic trim use a pair of pliers to release the clips securing the bumper trim from the underside of the bumper.



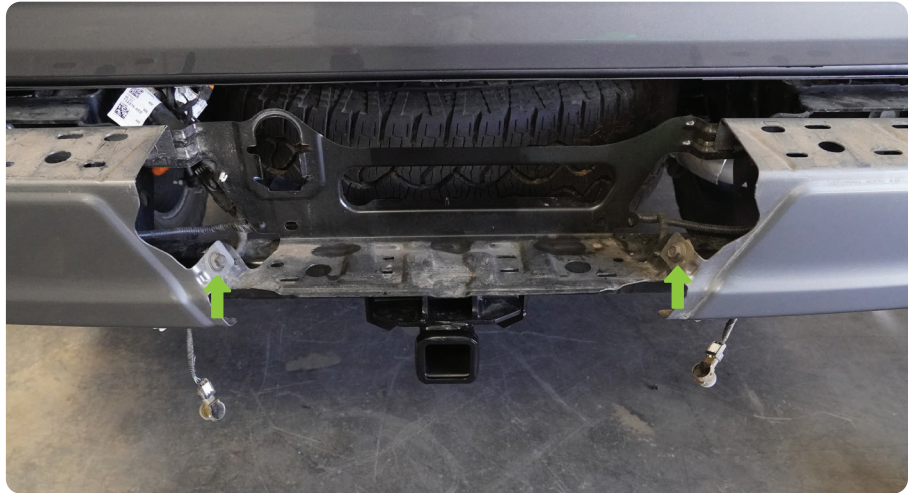
INSTALLATION MANUAL

STEP 6 | With all trim clips unclipped, remove the bumper trim piece.



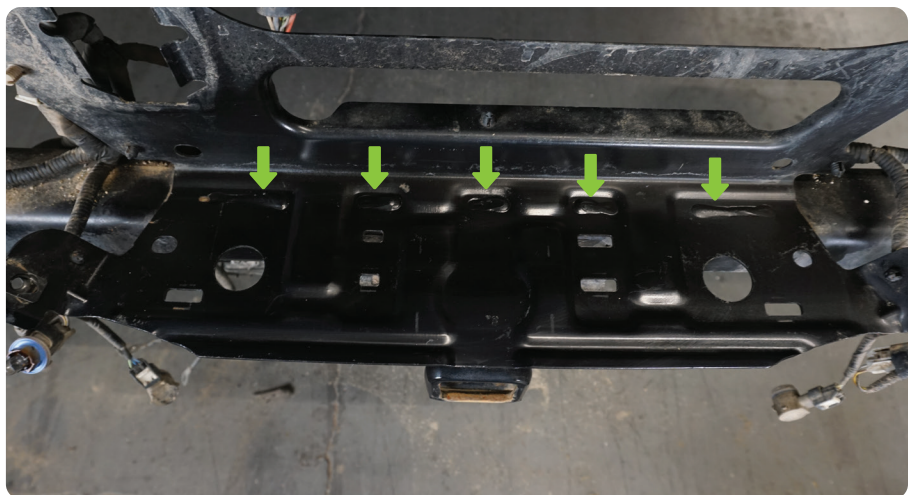
STEP 7 | Use a 13mm socket to remove the (2) front bolts that secure the bumper corners.

Use a 13mm socket to remove the (4) bolts on each side that secure the bumper corners to the frame rail and center plate.





STEP 8 | Remove the hitch plate by grinding out the spot wells with your preferred grinding wheel.





STEP 9 | Use a trim clip tool to remove any wiring harness retaining clips.



STEP 10 | Use your preferred grinding wheel to remove any left over welds from the tow hitch.



INSTALLATION MANUAL

STEP 11 | Using a 10mm socket, remove the bolt that secures the (2) wiring harness ground wires from the outside of the driver-side frame rail.



STEP 12 | Disconnect the rear parking sensor harness at the cross bar above the spare tire.



STEP 13 | Use a trim clip tool to remove any wiring harness retaining clips.

Remove the parking sensor wiring harness and set it off to the side.





STEP 14 | Place the DV8 rear bumper on a covered work bench. Begin assembly by installing the factory license plate lights and Trailer connector socket.



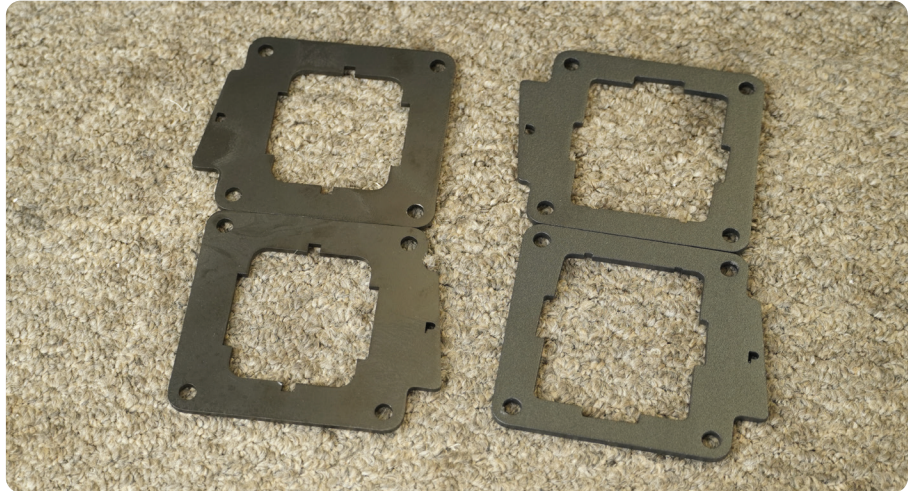
STEP 15 | Install the (2) provided mounting nut clips on to the bumper as shown.



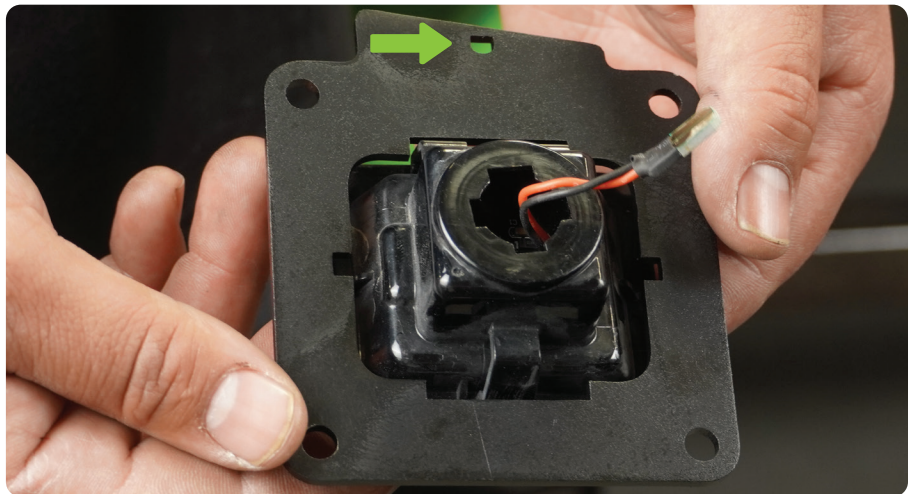
INSTALLATION MANUAL

STEP 16 | Provided are two sets of license plate brackets.

Using your license plate lights, test which set of brackets your lights fit snugly into.



STEP 17 | See arrow that points to the “D” identifying this is a driver side bracket.



STEP 18 | Once identified, using the “P” or “D” on the brackets, install them onto the backside of the bumpers as shown on the correct driver or passenger side.



INSTALLATION MANUAL

STEP 19 | If you are planning on running pod light install them at this time using the hardware provided with the light.

Use the provided zip tie tabs to secure any wiring.



STEP 20 | Before installing the parking sensor bezels, (if equipped) Cut the locking tab slightly shorter.

Cutting of the locking tab is required as the DV8 bumper is thicker material than the factory bumper. If the locking tabs are not cut they will cause difficulties when the sensors are installed.



STEP 21 | Install the sensor bezel in the same position they were removed from the factory bumper by pressing the bezel into the bumper from the front side until it clicks into place.

The DV8 sensor bezel holes are keyed so the bezels will only install one way.



INSTALLATION MANUAL

STEP 22 | Route the parking sensor, license plate light and trailer connector harness through the bumper and install the parking sensor into its appropriate sensor bezel.



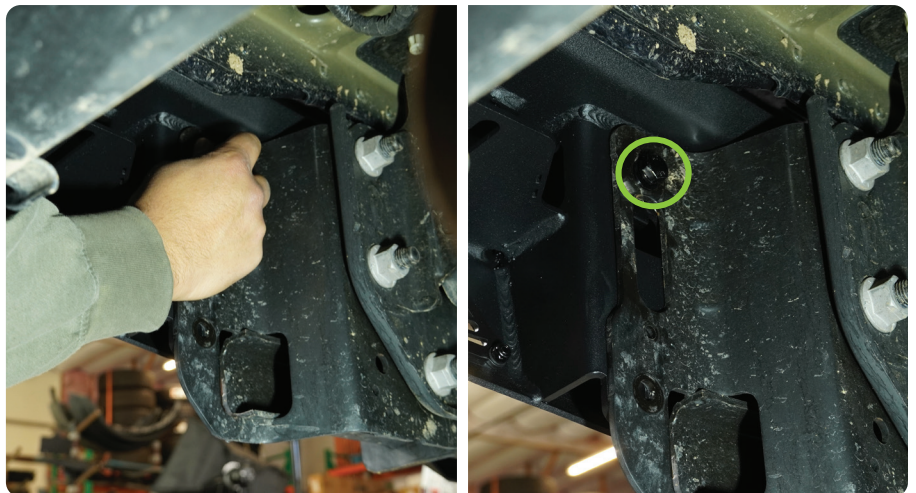
STEP 23 | Lift the DV8 rear bumper up to the vehicle, letting the bumper rest on top of the tow hitch.



STEP 24 | Thread the provided M10x30 hex head hardware into the top mounting holes with nut clips to loosely secure the bumper to the frame.

(2) Hex head bolts per frame rail.

Use (1) flat washer and (1) split washer per Hex bolt.





STEP 25 | Through bolt the bottom mounting hole using the provided M10x30 Allen head bolts and M10 Nylon lock nuts.

Use (2) flat washer per Allen head bolt.



STEP 26 | Center the bumper with the vehicle and adjust the bumper up/down as need ensuring clearance of the tailgate when close and open.

Use a 16mm socket to secure the (4) hex head mounting bolts.

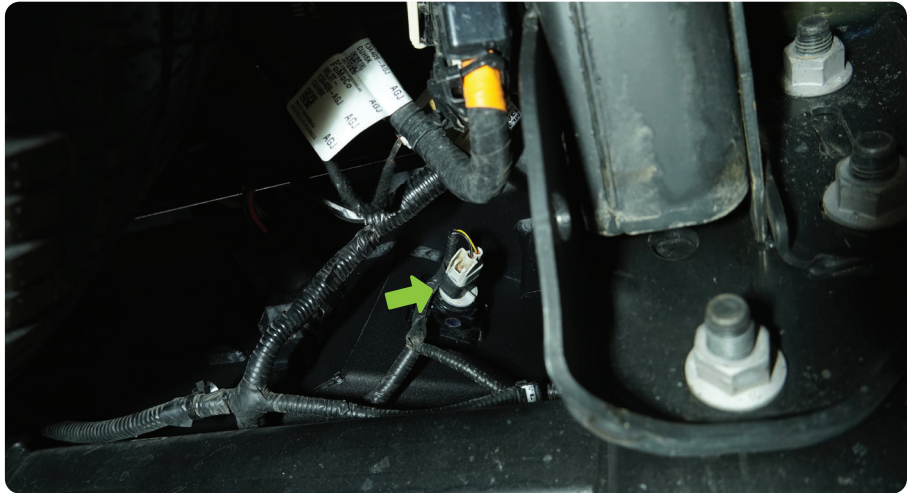
Use a #6 Allen tool and 17mm socket to secure the (2) Allen head mounting bolts.



INSTALLATION MANUAL

STEP 27 | Reconnect the parking sensor harness (if equipped), trailer connector socket, and license plate lights.

Reconnect both ground wires using the factory bolt and 10mm socket.



INSTALLATION MANUAL

STEP 28 | Install the spare tire access cap on to the bumper.

If the spare tire access cap has play/rattles DV8 provides a foam ring for the back side to restrict any movement.



INSTALLATION MANUAL

STEP 29 | Double check that all hardware is secured.

Congratulations, installation of the DV8 rear bumper is now complete.

