

REAR SPEC SERIES BUMPER

17-25 FORD F250/350/450

RBFF2-03



TOOLS REQUIRED

- #4, Allen Tool
- 10mm, 13mm, 18mm, 21mm sockets
- Trim Tool
- Safety Glasses

SKILL LEVEL

- Novice
 - 1 (you) to 2 persons
- Little skill level required, you can easily install it by yourself however, additional help will be useful

TIME REQUIRED

- 4 Hours
- Time to install this should only take about four hours

WARNINGS/CAUTIONS BEFORE STARTING INSTALLATION

Before you install this kit — Read and understand all instructions, warnings, cautions, and notes contained in this installation instruction guide. Consult your vehicle owner's manual for proper disconnection of electrical and lifting of vehicle if required for installation of this product.

This install may require some technical skills and knowledge of basic mechanical work. If you do not feel that you are capable of performing this install please take this product to a trained professional.

After reading this guide please contact us with any questions or concerns before installing product.
Customer Service: 855-680-9595

DV8 Offroad is not responsible for any bodily injury or harm to you or your vehicle as a result of an improper install.

Proper installation of this kit required knowledge of the factory recommended procedures for removal and installation of original equipment components. We recommend that the factory shop manual and any special tools needed to service your vehicle be on hand during the installation. Installation of this kit without proper knowledge of the factory recommended procedures may affect the performance of these components and the safety of the vehicle

- Always wear eye protection when operating power tools

Inspect all contents of this package to make sure product is not damaged and all installation hardware has been included. If parts are missing from kit, please be prepared to provide the following information

1. Name of purchase location
2. Bar Code on side of box
3. Date above bar code
4. Date inside box cover

INSTALLATION MANUAL

Begin by unpacking all items and inspecting for missing pieces or damage. If you have any concerns, please contact the company the product was purchased from. Extra hardware may be included with the product.

HARDWARE INCLUDED

- | | |
|------------------------------|-------------------------|
| (4) M6x20mm Allen Head Bolts | (6) M12 Nut Clips |
| (4) M6 Nylon Lock Nuts | (6) M12 Split Washer |
| (8) M6 Flat Washers | (1) Foam Ring |
| (6) M12 Flat Washers | (4) M14x35mm Hex bolts |
| (6) M12x30mm Hex Bolts | (4) M14 Nylon Lock Nuts |
| | (8) M14 Flat Washers |



STEP 1 | Start by removing the bumper plate that mounts to the hitch using a 13mm socket.





STEP 2 | Disconnect the bumper wiring harness.

Disconnect the trailer plug harness.



INSTALLATION MANUAL



STEP 3 | Moving to under the vehicle, use a 21mm socket to remove the (2) bolt securing the bumper to the frame rail brackets on each side.

****Use caution when removing the bolts, the bumper can fall once the mounting bolts have been removed.****

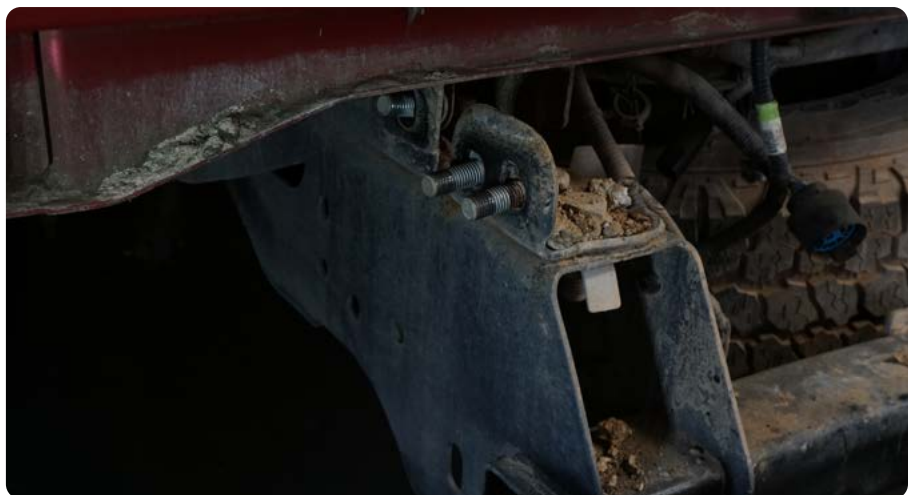
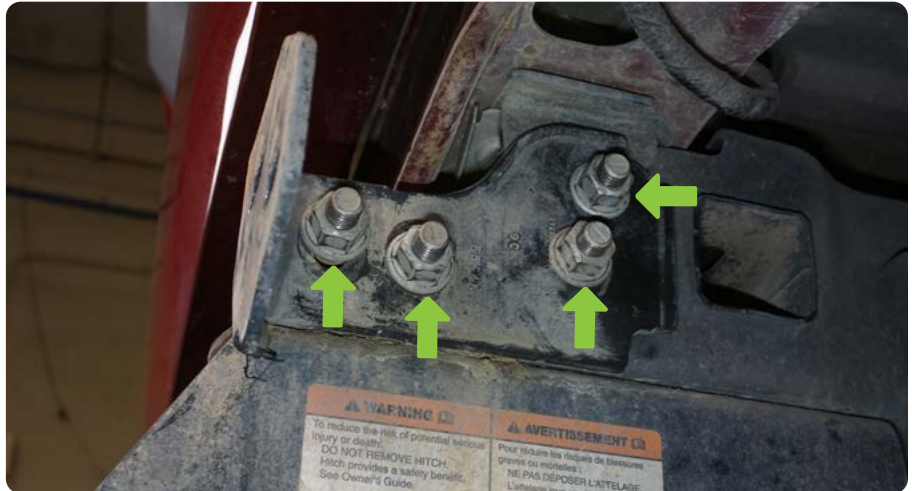


INSTALLATION MANUAL

STEP 4 | Remove the rear bumper as place on a covered work bench.



STEP 5 | Using a 21mm socket, remove the factory bumper mounting brackets.



INSTALLATION MANUAL

STEP 6 | Mount the provided bumper mounting brackets reusing the factory hardware and a 21mm socket.



STEP 7 | Moving back to the factory rear bumper, remove the trailer plug by depressing the metal clips on each side using a trim tool.



INSTALLATION MANUAL

STEP 8 | (If equipped) remove the parking sensors from the bumper bezels by spreading the locking tabs apart and pressing the out the back from the bumper face.



STEP 9 | With the parking sensor removed, you can remove the bezel through the face of the bumper.

*****IMPORTANT***** As you remove each sensor bezel, reinstall the bezel back in the same position on the DV8 Spec rear bumper to ensure all bezels are kept in order****



INSTALLATION MANUAL

STEP 10 | Disconnect the license plate lights by depressing the electrical plug connector tab.

Remove the license plate light assembly by depressing the locking tabs on the side of the light housing and pressing the housing out through the face of the bumper. (Yellow arrow)



STEP 11 | Using a trim tool, remove all push pin clips that secure the bumper harness to the bumper.



STEP 12 | Carefully remove the electrical harness from the bumper.



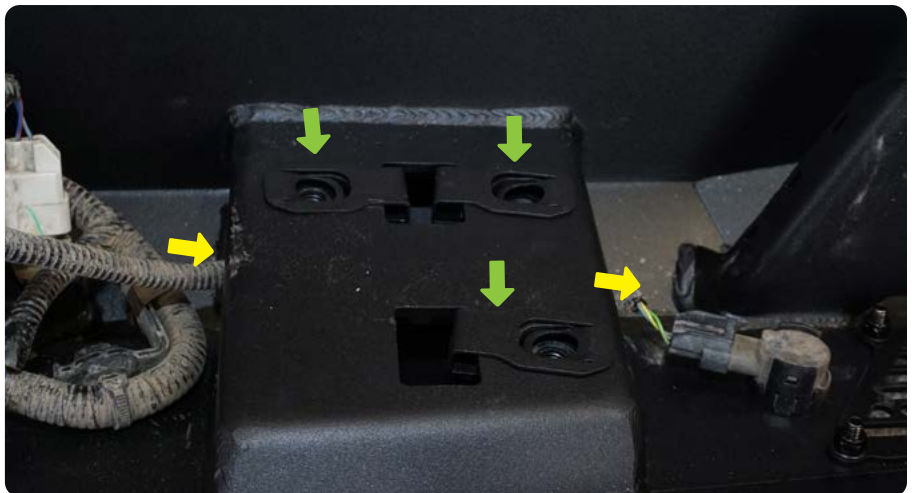
INSTALLATION MANUAL

STEP 13 | Install the trailer plug and license plate light housing into the DV8 spec rear bumper.



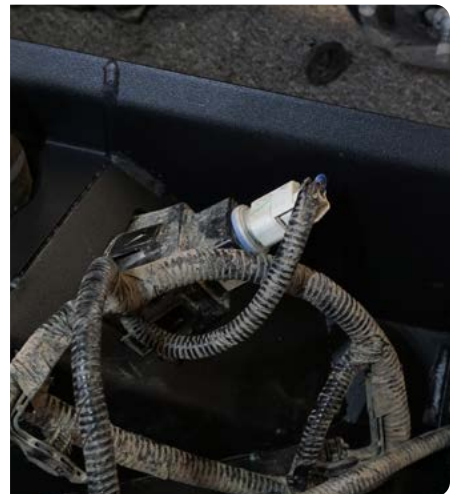
STEP 14 | Install the bumper harness on to the DV8 spec rear bumper ensuring the outer parking sensors are routed through the mounting points. (Yellow arrow)

Install the nut clips on to the bumper mounting points.





STEP 15 | Reconnect the harness to the license plate lights and install the center parking sensor into their bezels.



STEP 16 | Secure any loose wiring using zip-ties and the welded zip-tie tabs.





STEP 17 | Place the provide foam ring onto the back of the spare tire lock as shown.



STEP 18 | Install the spare tire lock onto the DV8 spec rear bumper.

Using a #4 allen and 10mm wrench with the provided M6 hardware mount your license plate to the DV8 rear bumper.



INSTALLATION MANUAL

STEP 19 | If you are planning on running Pod light, mount your pod lights now using the hardware provided with the light.



STEP 20 | With assistance, place the bumper onto the vehicle. Using the provided M12 hex head bolts loosely secure the bumper to the frame rail bracket previously installed.



INSTALLATION MANUAL

STEP 21 | To install the 3rd (inner) mounting bolt, it is best to reach between the hitch and bumper



STEP 22 | Center the spec rear bumper with the vehicle.

With the bumper centered, secure the M12 hex head hardware using a 18mm socket.



INSTALLATION MANUAL

STEP 23 | Double check that all hardware is secure.

Congratulations, Installation of the DV8 Super Duty Spec Series rear bumper is complete.

