

2ND GEN RAPTOR TUBE REAR BUMPER

17-21 FORD RAPTOR

FBFR1-01



TOOLS REQUIRED

- T40 Torx Tool
- #6 Allen Tool
- 17mm sockets
- Grinder and cutoff/grinding disc
- Flush cuts/ Razor blade
- Trim Tool
- Spray Paint
- Safety Glasses

SKILL LEVEL

- Intermediate
 - 1 (you) to 2 persons
- Little skill level required, you can easily install it by yourself however, additional help will be useful

TIME REQUIRED

- 4.5 Hours

Time to install this should only take about four and half hours

WARNINGS/CAUTIONS BEFORE STARTING INSTALLATION

Before you install this kit — Read and understand all instructions, warnings, cautions, and notes contained in this installation instruction guide. Consult your vehicle owner's manual for proper disconnection of electrical and lifting of vehicle if required for installation of this product.

This install may require some technical skills and knowledge of basic mechanical work. If you do not feel that you are capable of performing this install please take this product to a trained professional.

After reading this guide please contact us with any questions or concerns before installing product.
Customer Service: 855-680-9595

DV8 Offroad is not responsible for any bodily injury or harm to you or your vehicle as a result of an improper install.

Proper installation of this kit required knowledge of the factory recommended procedures for removal and installation of original equipment components. We recommend that the factory shop manual and any special tools needed to service your vehicle be on hand during the installation. Installation of this kit without proper knowledge of the factory recommended procedures may affect the performance of these components and the safety of the vehicle

- Always wear eye protection when operating power tools

Inspect all contents of this package to make sure product is not damaged and all installation hardware has been included. If parts are missing from kit, please be prepared to provide the following information

1. Name of purchase location
2. Bar Code on side of box
3. Date above bar code
4. Date inside box cover



INSTALLATION MANUAL

Begin by unpacking all items and inspecting for missing pieces or damage. If you have any concerns, please contact the company the product was purchased from. Extra hardware may be included with the product.

HARDWARE INCLUDED

- (2) M10x30 Hex head bolts
- (2) M10x30 Allen head bolts
- (2) M10 Lock washers
- (6) M10 Flat washers
- (2) M10 Nylock nuts
- (2) M10 Nut clips
- (2) M8x25 Allen head bolts
- (2) M8 Lock washers
- (2) M8 Flat washers
- (4) M6x20 Allen head bolts
- (4) M6 Nylock nuts
- (8) M6 Flat washers

STEP 1 | Start by removing the locking tire spare tire cover.



INSTALLATION MANUAL

STEP 2 | Reaching to the backside of the bumper, squeeze the metal tabs on the sides of the trailer plug while pressing the trailer plug out of the bumper.



STEP 3 | With the plug pulled out, the wiring should be easy to access. Depress the plug tab and pull away from the trailer plug.

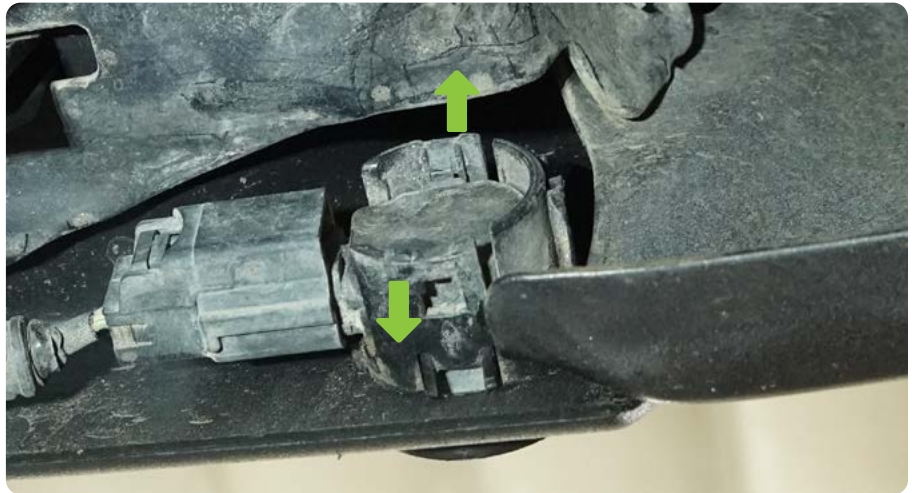


INSTALLATION MANUAL

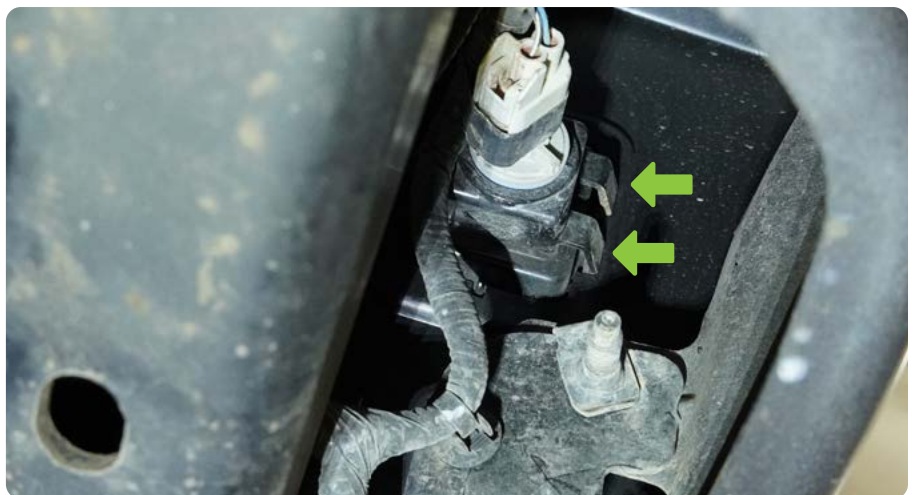
STEP 4 | Reaching up from the underside of the bumper, remove the two center parking sensors.

Lightly pulling apart the sensor bezel, press the sensor from the outside to release from the bezel.

Tech Tip: Keep the sensors plugged in to the harness to avoid switching positions.



STEP 5 | From the backside, depress the two tabs on each license plate lights. Unplug the lights and set off to the side.





STEP 6 | While tools are not necessary, they can be used. Pry up on the plastic portion of the bumper. With pressure it should release.

Remove completely.





STEP 7 | Using a T40, remove (6) bolts per side.

There are (4) on the backside of the bumper, (1) near the exhaust, and (1) near the license plate light.





STEP 8 | Using a trim tool, detach the harness from the bumper caps. Remove the caps.



INSTALLATION MANUAL

STEP 9 | Using a grinder, cut at the welds on the license plate bracket to remove the bracket.

Grind down the welds until smooth.

The welds are marked in yellow ---->



STEP 10 | Paint any raw/exposed metal to prevent corrosion.



INSTALLATION MANUAL

STEP 11 | Moving to the DV8 Tube bumper, install the provided M10 clip nuts to the bumper as shown.



STEP 12 | Reinstall the license plate lights in the same direction they were removed from the factory bumper. These should lightly click into place.



STEP 13 | Install the trailer plug until it clicks into place.





STEP 14 | Install the locking spare hoist cover into the new bumper.



INSTALLATION MANUAL

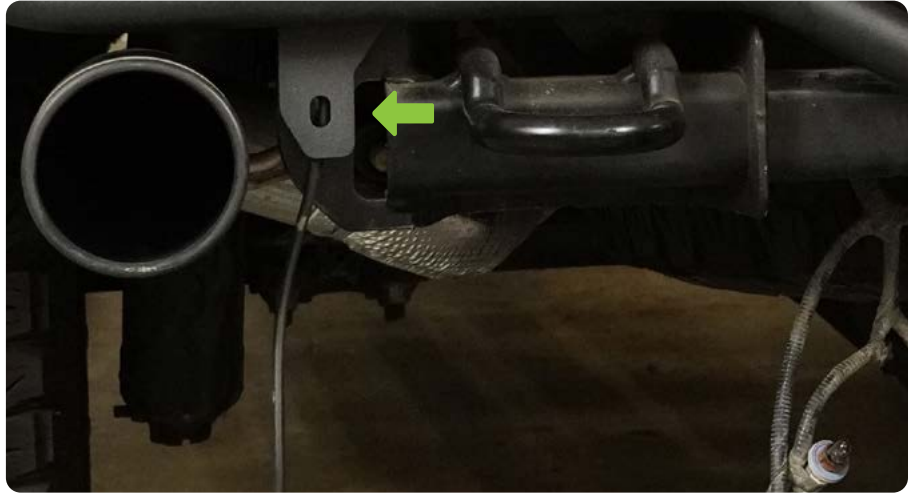
STEP 15 | If running pod lights, using the hardware provided with the light install the 3" pod lights now.

For this install we are using a pair of the DV8 Elite 3" Pod lights.



STEP 16 | With the bumper fully dressed (expect the sensors which will be done once the bumper is mounted), using the Provided M10 allen head bolts and (2) of the T40 torx factory bolts, loosely install the bumper onto the truck.





STEP 17 | Using the provided M10 hex head bolt, install the bolt into the nut clip on the backside. Secure using a 16mm socket.

Using a #6 and 17mm socket, tighten the top allen head bolt until secure.



STEP 18 | Remove the sensor plugs.



INSTALLATION MANUAL

STEP 19 | We provide a set of 4 sensor bezels. These typically are for 2017-2019 models, however if they do not fit your sensors, you can use the OEM bezels.

Remove the OEM bezels from the bumper.

On the sensor bezels, there are these double lines. (3 pairs). These will need to be trimmed down to fit into our bumper.



STEP 20 | Using a razor blade or sand paper, shave the key tabs down until about 1-1.5mm sticks up. This will help keep them tight in our bumper.



INSTALLATION MANUAL

STEP 21 | Once trimmed down, insert them into the bumper and then install the sensor from the backside into the bezel until the sensor “clicks” into place.



STEP 22 | Repeat steps until all sensors are installed.

Plug in license plate lights and trailer plug harness. Ensure all hardware is secure.

Test backup sensors to ensure they are reading properly. Some sensors may need to be rotated slightly to read properly.



INSTALLATION MANUAL

STEP 23 | Congratulations, you are now done with the 2nd Gen Raptor Rear Tube Bumper install.

