

## 4RUNNER ROOF RACK

2025+ TOYOTA 4RUNNER

RRTF3-02 & RRTF3-02L



### TOOLS REQUIRED

- #4, #5 Allen Tool
- 10mm, 12mm, 13mm Socket/Wrenches
- Safety Glasses

### SKILL LEVEL

- Novice/Intermediate
- 3 to 4 people required

Little skill level required, you can easily build the rack alone, but will need additional help lifting the rack into place.

### TIME REQUIRED

- 4-5 Hours

Time to install this should only take about four to five Hours.

## WARNINGS/CAUTIONS BEFORE STARTING INSTALLATION

Before you install this kit — Read and understand all instructions, warnings, cautions, and notes contained in this installation instruction guide. Consult your vehicle owner's manual for proper disconnection of electrical and lifting of vehicle if required for installation of this product.

This install may require some technical skills and knowledge of basic mechanical work. If you do not feel that you are capable of performing this install please take this product to a trained professional.

After reading this guide please contact us with any questions or concerns before installing product.  
Customer Service: 855-680-9595

*DV8 Offroad is not responsible for any bodily injury or harm to you or your vehicle as a result of an improper install.*

Proper installation of this kit required knowledge of the factory recommended procedures for removal and installation of original equipment components. We recommend that the factory shop manual and any special tools needed to service your vehicle be on hand during the installation. Installation of this kit without proper knowledge of the factory recommended procedures may affect the performance of these components and the safety of the vehicle

- Always wear eye protection when operating power tools

*Inspect all contents of this package to make sure product is not damaged and all installation hardware has been included. If parts are missing from kit, please be prepared to provide the following information*

1. Name of purchase location
2. Bar Code on side of box
3. Date above bar code
4. Date inside box cover

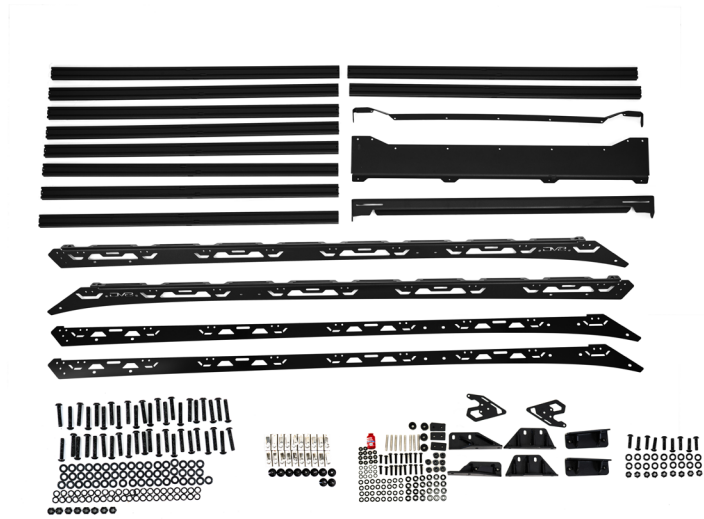


# INSTALLATION MANUAL

Begin by unpacking all items and inspecting for missing pieces or damage. If you have any concerns, please contact the company the product was purchased from. Extra hardware may be included with the product.

## HARDWARE INCLUDED

(36) M6x30mm Allen Head Bolts	(14) M8x30 Allen Head Bolts
(36) M6 Split Washers	(16) M8 Large Flat Washers
(36) M6 Flat Washers	(12) M8 Split Washers
(10) M6x12mm Counter Sunk Head Bolt	(14) M8 Nylon Lock Nuts
(10) M6 T-nuts	(12) M8x55mm Threaded Stud
(13) M6x20mm Allen Head Bolts	(24) M8 20mm Spacers
(6) M6x30mm Allen Head Bolts	(12) M8 22mm Tall Spacers
(38) M6 Flat Washers	(1) 10 ML Blue Thread Locker
(19) M6 Nylon Lock Nuts	



**STEP 1** | Lay out the side rails their fascia and the rear end cap as shown.



**STEP 2** | Lay the side rails fascia (gloss black) on the inside of the side rail as shown.



## INSTALLATION MANUAL

**STEP 3** | Using (6) of the provided M6x25mm allen head bolts, a #4 allen tool and a 10 mm wrench, attach the rear end cap to the side rails on each side. Use a M6 flat washer on each side of the side rail per bolt.

Ensure the fascia is sandwiched between the side rail and rear end cap.

*Tech tip: It is best to secure the upper/rear M6 bolt first (RED)*



**STEP 4** | Use the provided M6x30mm allen head bolts and a #4 allen tool to loosely attach the middle and front cross bars to the side rails.

Use (1) M6 split washer and (1) M6 flat washer per bolt.

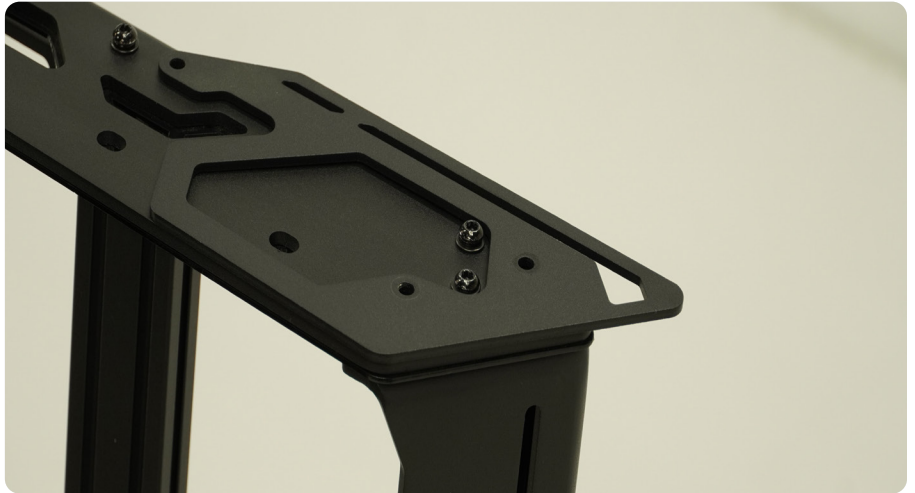


## INSTALLATION MANUAL

---

**STEP 5 |** (Optional): Provided with the roof rack kit are (2) rear fins. If you wish to run these fins, remove the end caps hardware and secure the fin in place using the end caps hardware.

*Note: Shape of fin will vary depending on roof rack being installed.*





## INSTALLATION MANUAL

**STEP 6 |** Install all other cross bars that you wish to run (depending on the accessories you plan to mount). A minimum of 4 cross bars are required (including front and rear cross bars).

We will be using all cross bars for this install which is the most common option.



**STEP 7 |** Using the provided M6x20mm allen head hardware, a #4 allen tool and 10mm wrench, secure the front lip to the wind deflector plate.

Use (1) M6 flat washer per side of the panel/lip.

**Tech Tip:** Before securing the M6 hardware, place an M8 bolt on each side of the fascia panel and through the lip bracket. This will help align the lip panel properly.



## INSTALLATION MANUAL

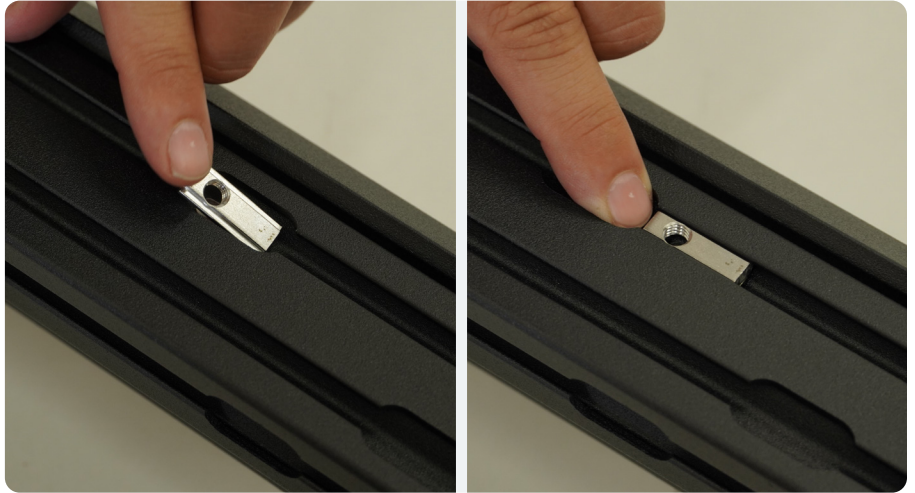


**STEP 8** | Install the T-nuts into the front and rear cross bars. The front cross bar will receive (6) T-nuts on top. The rear cross bar will receive (4) T-nuts



## INSTALLATION MANUAL

**STEP 9** | Keeping the spring at the bottom, install the T-Nut through the cross bar cut out as shown.



**STEP 10** | Align the T-nuts with the side rails upper counter sunk mounting holes, use the provided M6x12mm counter sunk hardware to secure the side rail to the cross bar on each side at the front and rear.





# INSTALLATION MANUAL

**STEP 11** | Mount the front wind deflector plate with lip to the front of the roof rack, ensure that this plate is between the side rails.

Use the provide M6 hardware and a #4 allen tool to secure the fascia plate to the cross bars T-nuts.

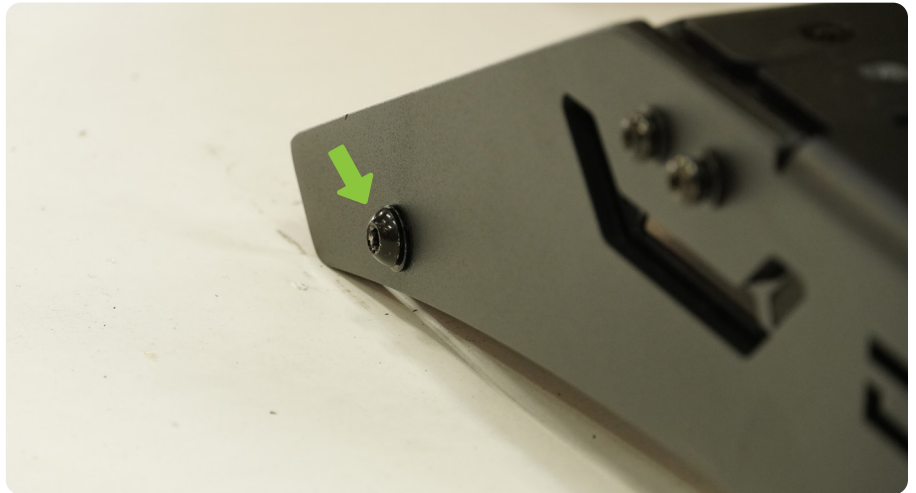
If you are planning to run the light bar front fascia skip to step 28.





# INSTALLATION MANUAL

**STEP 12** | Using the provided M8 hardware, a #5 allen tool and a 13mm wrench to secure the front of the fascia plate to the side rails.



**STEP 13** | Using the provided blue thread locker, assemble the roof mounting hardware and provided spacers together, ensuring an equal amount of threads is on each side of the spacer.

**Place the end of the threaded post with the allen head it pointed upward.**

**Note:** The round part of the spacer is the bottom that will be resting against the vehicle.



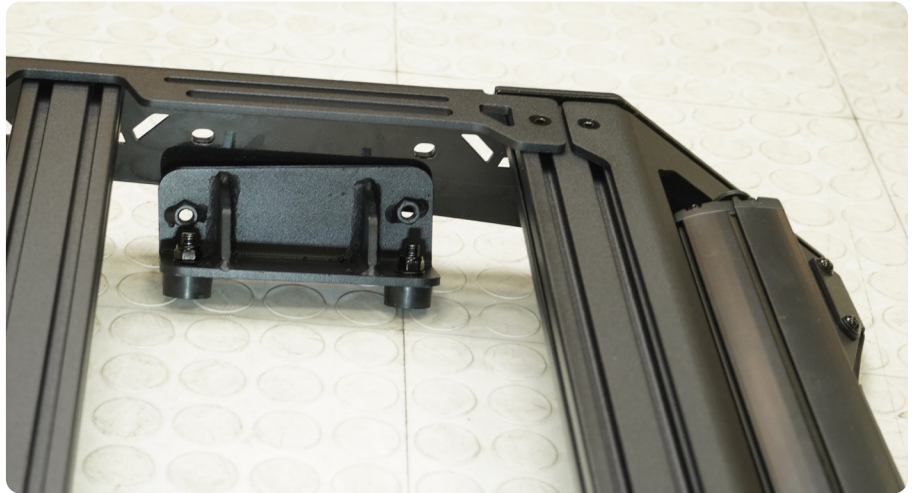
## INSTALLATION **MANUAL**

---

**STEP 14** | Using a 13mm socket and #5 allen tool with the provided M8 hardware, mount the provided rubber feet to the front brackets.



**STEP 15** | Using a #4 allen tool and the provided M6 hardware, mount the front bracket to the inside of the roof rack rails.



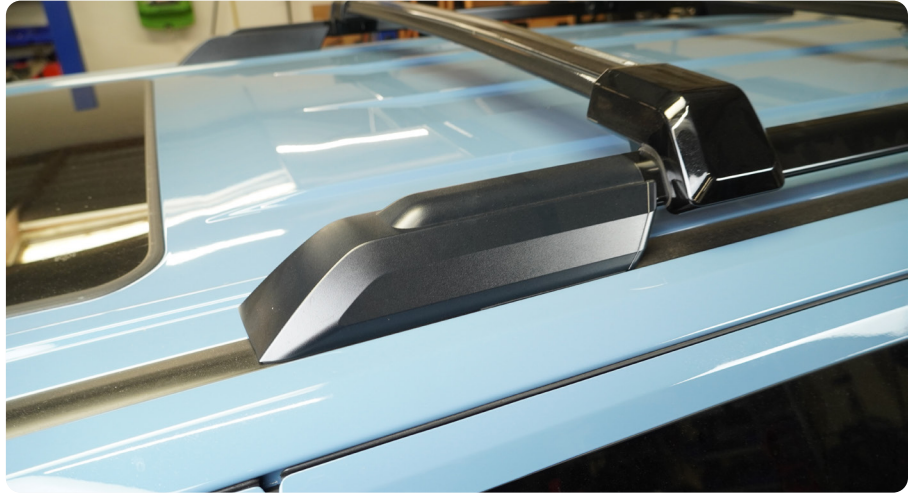


## INSTALLATION MANUAL

**STEP 16** | (If equipped) remove the factory roof rails using a 12mm socket.

If your vehicle did not come with factory roof rails, remove the covers to expose the factory threaded roof accessory mounting hole.

***This is can be difficult.*** Take your time and do not scratch the paint. The clips are on the side (green arrows). These can be difficult to access, but once the slides are unclipped, the cap will slide either forwards (front caps) or backwards (rear caps) to release the top clip.



## INSTALLATION MANUAL

**STEP 17** | Place a small amount of silicon into each of factory roofs accessory mounting holes as you install the roof mounting hardware with spacer.

Install the spacers hand-tight, using a 13mm wrench tighten the hardware until you feel the spacers dead stop.

Ensure the plastic collars are pushed flat by the spacers.







**STEP 18** | Using a #5 allen tool, turn the threaded bolt down until you feel slight resistance.

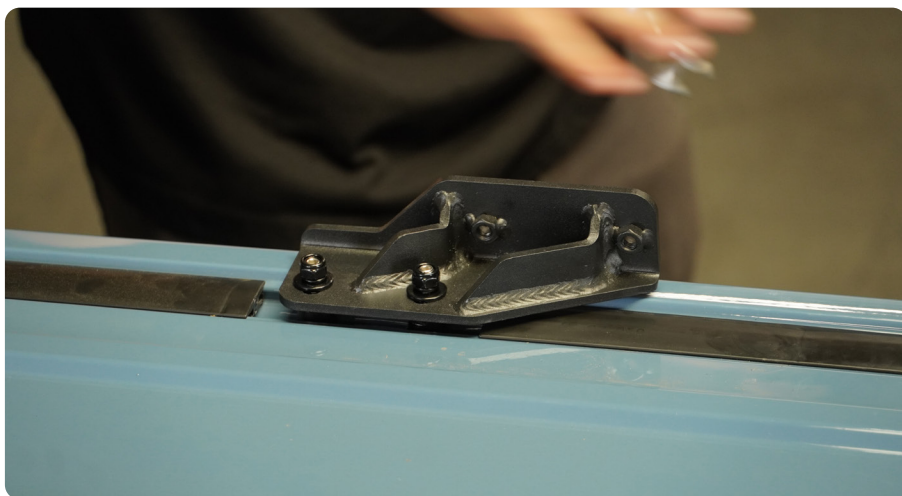


**STEP 19** | Loosely secure the bracket to the spacers previously installed. The M8 nylon nuts should be just tight enough that you are still able to adjust the brackets in and out, with a firm grip.



# INSTALLATION MANUAL

---





# INSTALLATION MANUAL

---

**STEP 20 |** Cover the car using blankets or towels to protect the vehicles paint.

With help ( 4 people minimum) place the roof rack onto the vehicle.



**STEP 21 |** Install all M8 Mounting bracket hardware by hand.





**STEP 22** | With all M8 mounting bracket hardware loosely started, secure the M8 hardware using a #5 allen tool.



**STEP 23** | Ensure the rack is centered with the vehicle.





## INSTALLATION MANUAL

---

**STEP 24** | With the rack centered, secure the mounting brackets in place using a 13mm wrench.



## INSTALLATION MANUAL

---

**STEP 25** | With roof rack secured in place check the side and windshield frame spacing.

If the spacing around the roof rack is not even, we provide spacer washers to help even out the spacing.

***Note:** This process can be tedious, however our goal is to achieve an equal spacing around.*





## INSTALLATION MANUAL

### STEP 26 | (RRTF3-02L Installation)

Using the front lip provided with the rack kit, mount the lip to the light bar front fascia plate using the provided M6 hardware. Using the provide M8 hardware, #6 allen tool and 13mm socket, secure the light bar plate to the front fascia plate from the back side.



**STEP 27 |** Mount the light bar brackets. These bracket will allow you to run two 20" LED Light Bars.







**STEP 28 |** Mount the front light bar plate with lip to the front of the roof rack, ensure that this plate is between the side rails.

Use the provide M6 hardware and a #4 allen tool to secure the fascia plate to the cross bars T-nuts



**STEP 29 |** Using the provided M8 hardware, a #5 allen tool and a 13mm wrench secure the front of the fascia plate to the side rails.

With the light bar fascia plate installed continue with the roof rack install on step 13.



# INSTALLATION MANUAL

---

**STEP 30** | Double check that all hardware is secure.

Congratulations, installation of the DV8 4Runner Roof Rack is now complete.

