

## FRONT DIFF SKID

24+ JEEP JL (D44)

SPJL-12



### TOOLS REQUIRED

- 10mm & 16mm Sockets
- Torque Wrench
- Safety Glasses

### SKILL LEVEL

- Novice/Intermediate
- 1 (you) to 2 persons

Little skill level required, you can easily install it by yourself however, additional help will be useful

### TIME REQUIRED

- 1 Hour

Time to install this should only take about an hour

## WARNINGS/CAUTIONS BEFORE STARTING INSTALLATION

Before you install this kit – Read and understand all instructions, warnings, cautions, and notes contained in this installation instruction guide. Consult your vehicle owner's manual for proper disconnection of electrical and lifting of vehicle if required for installation of this product.

This install may require some technical skills and knowledge of basic mechanical work. If you do not feel that you are capable of performing this install please take this product to a trained professional.

After reading this guide please contact us with any questions or concerns before installing product.  
Customer Service: 855-680-9595

*DV8 Offroad is not responsible for any bodily injury or harm to you or your vehicle as a result of an improper install.*

Proper installation of this kit required knowledge of the factory recommended procedures for removal and installation of original equipment components. We recommend that the factory shop manual and any special tools needed to service your vehicle be on hand during the installation. Installation of this kit without proper knowledge of the factory recommended procedures may affect the performance of these components and the safety of the vehicle

- Always wear eye protection when operating power tools

*Inspect all contents of this package to make sure product is not damaged and all installation hardware has been included. If parts are missing from kit, please be prepared to provide the following information*

1. Name of purchase location
2. Bar Code on side of box
3. Date above bar code
4. Date inside box cover



# INSTALLATION MANUAL

Begin by unpacking all items and inspecting for missing pieces or damage. If you have any concerns, please contact the company the product was purchased from. Extra hardware may be included with the product.

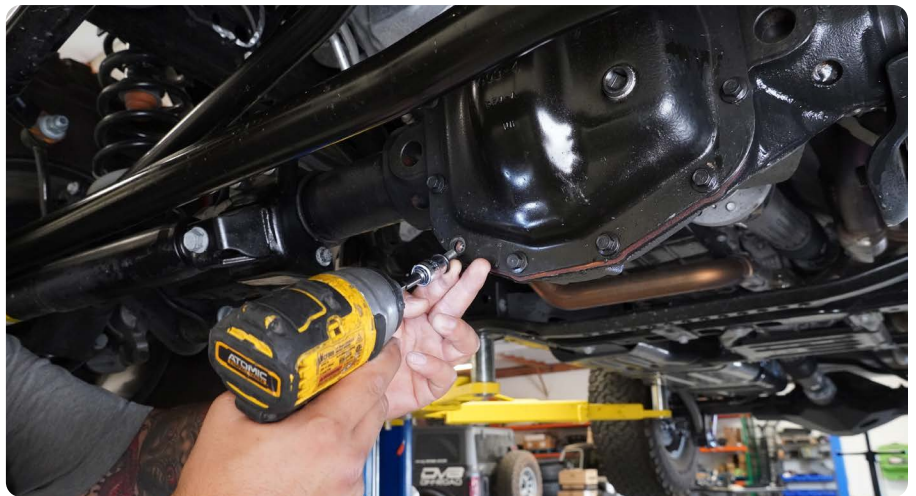
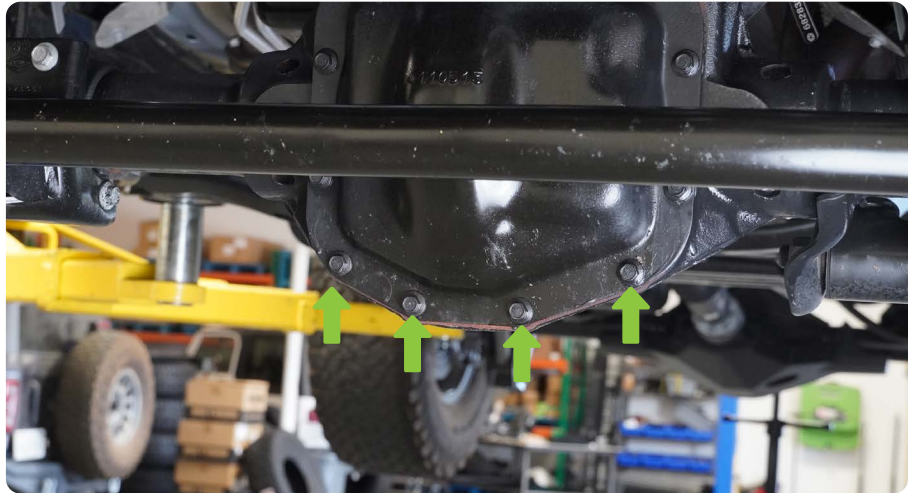
## HARDWARE INCLUDED

- (2) M10x25mm Bolts
- (2) M10 Lock Washers
- (2) M10 Flat Washers



**STEP 1** | Use a 10mm socket to remove the (4) lower diff cover mounting bolts.

**Note:** Do not pull or disturb the diff cover to avoid breaking gasket/seal.





**STEP 2** | Hold the DV8 Diff Skid Plate up to the bottom of the front diff and loosely install the (4) factory diff cover bolts.

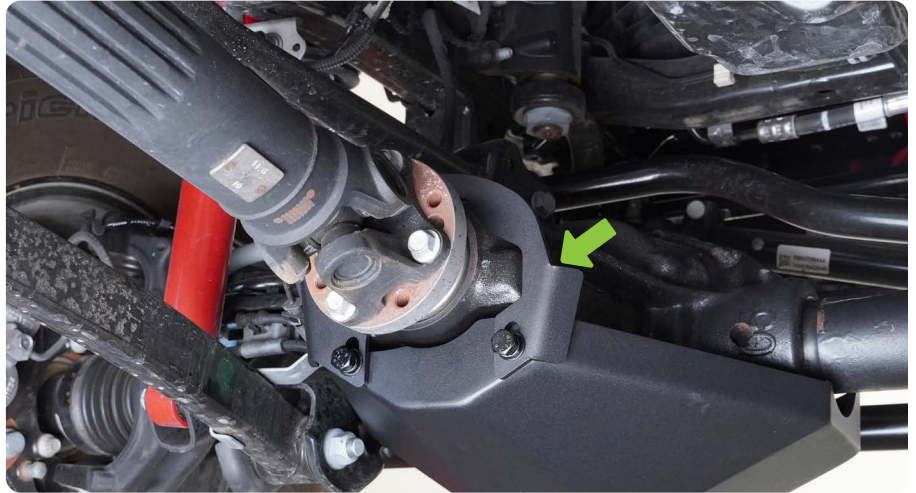


# INSTALLATION MANUAL

**STEP 3 |** Install the rear diff skid mounting bracket over the top of diff.

Loosely secure the rear mounting bracket to the diff skid plate using the provided M10 hardware.

Use (1) Spring washer and (1) flat washer per M10 bolt per side



**STEP 4 |** While lifting up on the diff skid plate, Use a 16mm socket to secure the rear mounting bracket in place.



**STEP 5 |** Use a 10mm socket to secure the (4) diff cover bolts.

Use a torque wrench to torque the (4) factory diff cover bolts to 25ft lbs.



# INSTALLATION MANUAL

**STEP 6** | Double check that all hardware is secure.

Congratulations, installation of the DV8 Front Diff Skid Plate is now complete.

