

TRAILING ARM SKID PLATE

25+ TOYOTA 4RUNNER

SPTF3-02



TOOLS REQUIRED

- 12,18 & 19mm sockets
- 18, 19mm wrenches
- Safety Glasses
- Heavy Duty Ratchet Straps

SKILL LEVEL

- Novice/Intermediate
- 1 (you) to 2 persons

Little skill level required, you can easily install it by yourself however, additional help will be useful

TIME REQUIRED

- 1.5 Hours

Time to install this should only take about one and half hours

WARNINGS/CAUTIONS BEFORE STARTING INSTALLATION

Before you install this kit — Read and understand all instructions, warnings, cautions, and notes contained in this installation instruction guide. Consult your vehicle owner's manual for proper disconnection of electrical and lifting of vehicle if required for installation of this product.

This install may require some technical skills and knowledge of basic mechanical work. If you do not feel that you are capable of performing this install please take this product to a trained professional.

After reading this guide please contact us with any questions or concerns before installing product.
Customer Service: 855-680-9595

DV8 Offroad is not responsible for any bodily injury or harm to you or your vehicle as a result of an improper install.

Proper installation of this kit required knowledge of the factory recommended procedures for removal and installation of original equipment components. We recommend that the factory shop manual and any special tools needed to service your vehicle be on hand during the installation. Installation of this kit without proper knowledge of the factory recommended procedures may affect the performance of these components and the safety of the vehicle

- Always wear eye protection when operating power tools

Inspect all contents of this package to make sure product is not damaged and all installation hardware has been included. If parts are missing from kit, please be prepared to provide the following information

1. Name of purchase location
2. Bar Code on side of box
3. Date above bar code
4. Date inside box cover



INSTALLATION MANUAL

Begin by unpacking all items and inspecting for missing pieces or damage. If you have any concerns, please contact the company the product was purchased from. Extra hardware may be included with the product.

HARDWARE INCLUDED

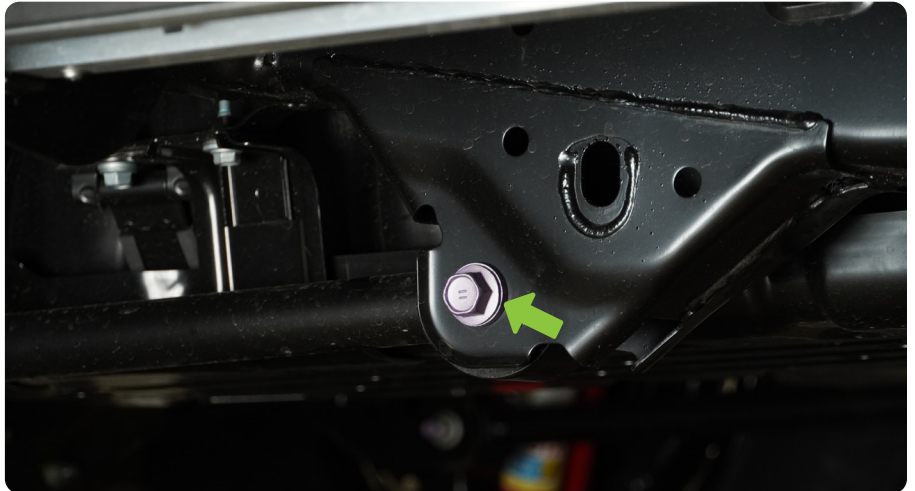
- (2) Hex Bolts
- (4) M12 Washers
- (2) Nylon Lock Nuts



STEP 1 | (Install shown on passenger-side, vehicle equipped with factory metal fuel take skid plate)

Using a 19mm socket and 19mm wrench remove the trailing arm bolt.

NOTE: If the bolt is difficult to move, use the ratchet strap to adjust the tension on the bolt. The bolt should easily come out.



INSTALLATION MANUAL

STEP 2 | With the bolt removed, place the DV8 Trailing arm skid plate in position over the factory mount.



STEP 3 | With the skid plate in position loosely secure the skid plate using the factory hardware. Thread the factory nut on by hand as much as possible.



INSTALLATION MANUAL

STEP 4 | Using a 12mm socket, remove the three bolts that secure the fuel take skid plate to the frame rail.



STEP 5 | With the fuel take skid plate lowered, install the provided M12 bolts into the upper mounting hole of the skid plate and through the trailing arm mount.

Use (1) M12 flat washer on each side of the frame rail.



INSTALLATION MANUAL

STEP 6 | Using a 18mm socket and 19mm wrench, secure the provided M12 bolt.

Using a 19mm socket and torque wrench, torque the factory link bolt to 103 ft. lbs. or factory spec if different.

The factory serrated nut should grip the DV8 skid plate. So you should not need to hold the nut.



STEP 7 | Once complete, repeat process for other side.

Double check all hardware is secure and there is no binding or contact from the link and new skid plate.

Congratulations you are done with the install of the DV8 Trailing Arm Skid Plates!

