

## OE PLUS STEPS

2024+ TOYOTA TACOMA

SRTT1-03



### TOOLS REQUIRED

- 12mm, 13mm Sockets
- Safety Glasses

### SKILL LEVEL

- Novice/Intermediate
- 1 (you) to 2 persons

Little skill level required, you can easily install it by yourself however, additional help will be useful

### TIME REQUIRED

- 1.5 Hours

Time to install this should only take about an hour and a half.

## WARNINGS/CAUTIONS BEFORE STARTING INSTALLATION

Before you install this kit – Read and understand all instructions, warnings, cautions, and notes contained in this installation instruction guide. Consult your vehicle owner’s manual for proper disconnection of electrical and lifting of vehicle if required for installation of this product.

This install may require some technical skills and knowledge of basic mechanical work. If you do not feel that you are capable of performing this install please take this product to a trained professional.

After reading this guide please contact us with any questions or concerns before installing product.  
Customer Service: 855-680-9595

*DV8 Offroad is not responsible for any bodily injury or harm to you or your vehicle as a result of an improper install.*

Proper installation of this kit required knowledge of the factory recommended procedures for removal and installation of original equipment components. We recommend that the factory shop manual and any special tools needed to service your vehicle be on hand during the installation. Installation of this kit without proper knowledge of the factory recommended procedures may affect the performance of these components and the safety of the vehicle

- Always wear eye protection when operating power tools

*Inspect all contents of this package to make sure product is not damaged and all installation hardware has been included. If parts are missing from kit, please be prepared to provide the following information*

1. Name of purchase location
2. Bar Code on side of box
3. Date above bar code
4. Date inside box cover

# INSTALLATION MANUAL

Begin by unpacking all items and inspecting for missing pieces or damage. If you have any concerns, please contact the company the product was purchased from. Extra hardware may be included with the product.

## HARDWARE INCLUDED

- (15) M8x35mm Hex Bolts
- (15) M8 Flat Washers
- (15) M8 Split Washers
- (8) Square Washer plates



**STEP 1** | (Driver side install shown):  
Remove the (7) factory hex bolts using a 12mm socket from the vehicles rocker panel.



**STEP 2** | With assistance, lift the step up to the vehicles rocker panel aligning the step with the factory threaded holes in the rocker panel.



# INSTALLATION MANUAL

**STEP 3 |** Use the provided washer plate, M8 hex bolts and M8 flat washers to loosely secure the step to the vehicle.

Use (1) square washer plate per mount bracket.

Use (1) M8 round flat washer per M8 hex bolt.

Use (1) M8 Split washer per M8 hex bolt

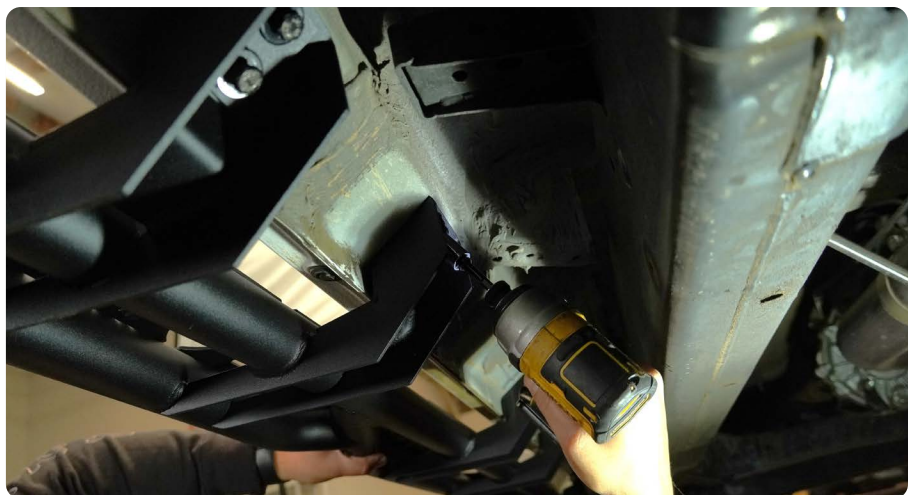


**STEP 4 |** Adjust the steps height level with the vehicle.

Use a 13mm socket to secure the (7) M8 hex bolts in place.



**STEP 5 |** Complete steps 1-4 on the vehicles passenger side.



# INSTALLATION MANUAL

---

## STEP 6 |

Double check that all hardware is secure.

Congratulations, installation of the Tacoma OE Plus Steps is now complete.

