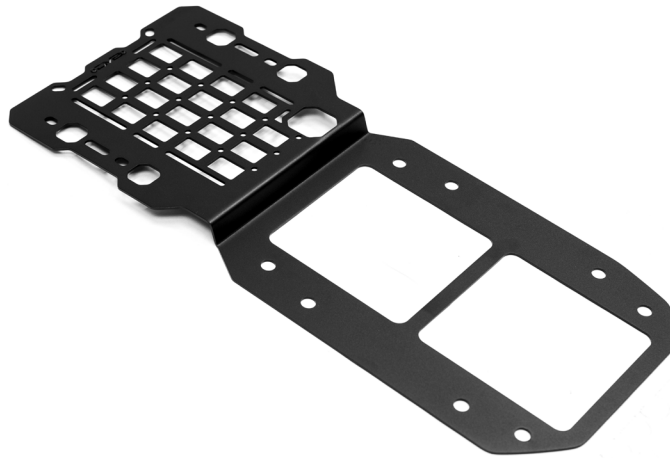


TIRE CARRIER REINFORCEMENT MOLLE

2018+ JEEP WRANGLER (JL)

TCJL-04



TOOLS REQUIRED

- #6 Allen Tool
- 13, 16mm sockets
- T40 and T55
- Trim Tool
- Safety Glasses

SKILL LEVEL

- Novice
- 1 (you) to 2 persons

Little skill level required, you can easily install it by yourself however, additional help will be useful

TIME REQUIRED

- 1.5 Hours

Time to install this should only take about one and half hours.

WARNINGS/CAUTIONS BEFORE STARTING INSTALLATION

Before you install this kit — Read and understand all instructions, warnings, cautions, and notes contained in this installation instruction guide. Consult your vehicle owner's manual for proper disconnection of electrical and lifting of vehicle if required for installation of this product.

This install may require some technical skills and knowledge of basic mechanical work. If you do not feel that you are capable of performing this install please take this product to a trained professional.

After reading this guide please contact us with any questions or concerns before installing product.
Customer Service: 855-680-9595

DV8 Offroad is not responsible for any bodily injury or harm to you or your vehicle as a result of an improper install.

Proper installation of this kit required knowledge of the factory recommended procedures for removal and installation of original equipment components. We recommend that the factory shop manual and any special tools needed to service your vehicle be on hand during the installation. Installation of this kit without proper knowledge of the factory recommended procedures may affect the performance of these components and the safety of the vehicle

- Always wear eye protection when operating power tools

Inspect all contents of this package to make sure product is not damaged and all installation hardware has been included. If parts are missing from kit, please be prepared to provide the following information

1. Name of purchase location
2. Bar Code on side of box
3. Date above bar code
4. Date inside box cover

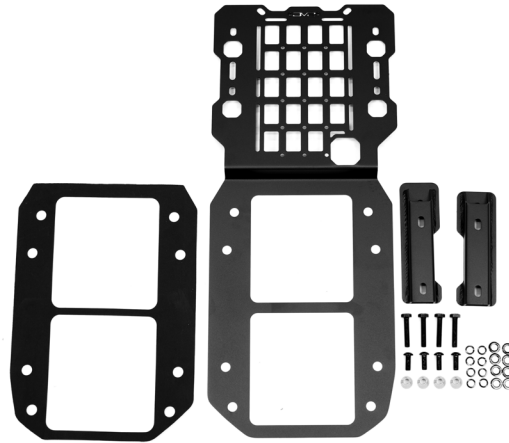


INSTALLATION MANUAL

Begin by unpacking all items and inspecting for missing pieces or damage. If you have any concerns, please contact the company the product was purchased from. Extra hardware may be included with the product.

HARDWARE INCLUDED

- (4) M10x25 Allen head bolts
- (4) M10x45 Hex head bolts
- (8) M10 Lock washers
- (8) M10 Flat washers
- (4) M10 Cone spacers



STEP 1 | Begin by removing the camera cover off the carrier using a T40. Pull the camera cover straight back off the mount.

Remove the spare tire off the JL. Lug nut size can vary depending on OE and aftermarket lug nuts.



INSTALLATION **MANUAL**

STEP 2 | Using a trim tool, remove the two caps over the factory hinges.

These caps will not be reused.



STEP 3 | Keep the door closed during this step.

Using a T55 socket, remove the 2 hinge bolts front the bottom hinge only.

Tech Tip: We recommend using hand tools for this since they can be tight and may strip using power tools.





STEP 4 | Using the M10x40 hex head bolts, install the bottom mounting bracket to the bottom hinge until secure using a 16mm socket.

Use the provided cone spacers between the tire molle mount and the OE hinge as shown.



INSTALLATION MANUAL

STEP 5 | Once the bottom is installed, repeat the steps for the top hinge.



INSTALLATION MANUAL

STEP 6 | Using the 13mm socket, remove the factory tire carrier. You can let it dangle with the wires carefully for this install.



STEP 7 | Clean up any dirt or debris.



STEP 8 | Unpeel the foam provided and place it onto the backside of the carrier molle.

Note the direction of the foam and panel to prevent placing it on the wrong side.





STEP 9 | Hold the panel up to the hinges installed earlier and align the nutserts on the hinges to the slots on the panel.

Line up the notches in the panel and the hinges so they align. Mounting using a #6 allen head and the M10 allen head bolts.

Keep hardware loose.



INSTALLATION MANUAL

STEP 10 | Hold up the factory tire carrier and using the factory hardware and 13mm socket, install the carrier over the reinforcement plate.

Note: If installing a tire delete, start from this point.



STEP 11 | Tighten the hinge mounting hardware using a #6 allen head.



INSTALLATION MANUAL

STEP 12 | Reinstall the tire onto the tire carrier and tighten lug nuts to factory recommend torque for the spare mount.

Using the T40 torx bit, reinstall the cover over the camera.



STEP 13 | Double check all hardware is secure.

Congratulations, you are done with the install of the DV8 JL Reinforcement Molle Panel.

